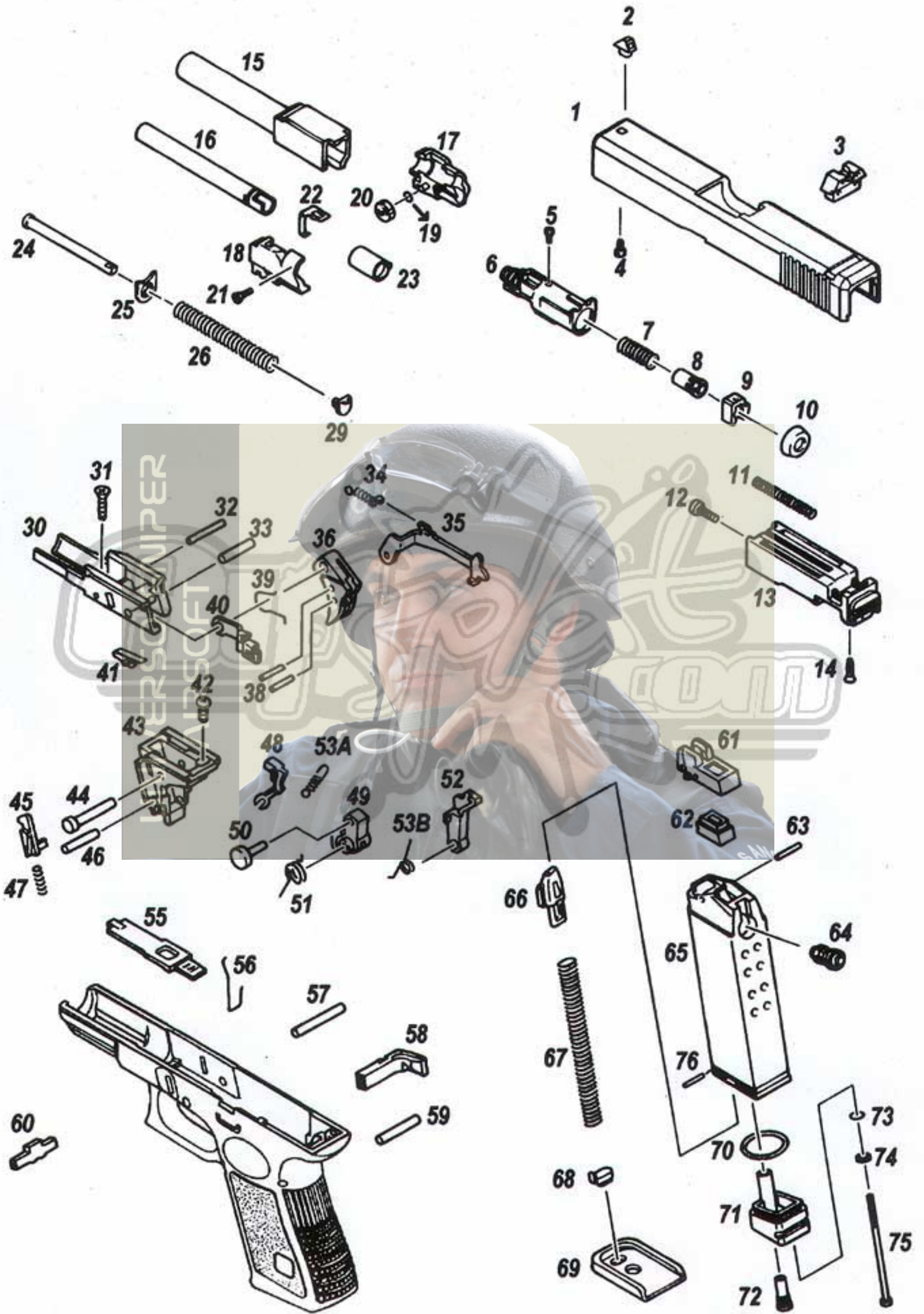


KJWORKS



G23

G23 Explode Drawing



G23 零件表

編號	品名	價格	編號	品名	價格
1	滑套	400	40	滑套擋桿	100
2	準星	40	41	滑套固定鎖簧	20
3	照門	60	42	螺絲 $\phi 2.6 \times 5$	10
4	螺絲 $\phi 2.6 \times 4$	10	43	擊錘座	200
5	螺絲 M 1.4 \times 3	10	44	機錘固定銷	20
6	汽缸	150	45	敲擊錘鎖	40
7	汽缸閥彈簧	20	46	捕獲鉤銷	20
8	汽缸閥	20	47	敲擊錘鎖簧	20
9	汽缸閥擋片	20	48	敲擊錘	40
10	活塞杯	50	49	擊錘	80
11	汽缸彈簧	20	50	擊錘滾輪	80
12	螺絲 M 3 \times 8	10	51	擊錘鈕簧	20
13	活塞座	400	52	捕獲鉤	60
14	螺絲 2.6 \times 8	10	53A	敲擊錘簧	20
15	外槍管	150	53B	捕獲鉤鈕簧	20
16	內槍管	120	54	槍身	500
17	槍膛外蓋 (右)	100	55	保險片	120
18	槍膛外蓋 (左)	100	56	彈夾鈕簧	20
19	O 環 $\phi 2.44 \times \phi 0.58$	10	57	前固定銷	20
20	彈道調整鈕	20	58	彈夾鈕	30
21	螺絲 2 \times 6	10	59	後固定銷	20
22	調整桿	40	60	滑套固定鎖	60
23	槍膛	80	61	彈夾上蓋	50
24	復進簧導桿	100	62	彈夾上蓋墊襯	60
25	復進簧墊片	60	63	彈夾上蓋銷	20
26	復進簧	30	64	出氣閥	120
		10	65	彈夾主體	400
		20	66	推彈桿	30
29	復進簧導桿尾端	20	67	推彈桿簧	40
30	板機座	200	68	推彈桿簧制動鈕	20
31	螺絲 $\phi 2.6 \times 12$	10	69	彈夾底板	150
32	固定銷	20	70	O 環 $\phi 18 \times \phi 2$	20
33	板機銅襯	20	71	彈夾基座	160
34	板機連桿簧	20	72	灌氣閥	50
35	板機連桿	120	73	O 環 $\phi 2.8 \times \phi 1.9$	10
36	板機	80	74	華司 $\phi 7 \times \phi 3.1$	10
37	板機保險	40	75	螺絲 M3 \times 50	20
38	板機銷	20	76	彈夾底板銷	20
39	滑套擋桿簧	20			

立智玩具工廠

KJWORKS

G23 Parts of list

No	Product name	Price	No	Product name	Price
1	Slide	400	40	Slide stop lever	100
2	Front sight	40	41	Slide lock spring	20
3	Rear sight	60	42	Screw ϕ 2.6 \times 5	10
4	Screw ϕ 2.6 \times 4	10	43	Rear chassis	200
5	Screw M 1.4 \times 3	10	44	Hammer rivet pin	20
6	Cylinder	150	45	Knocker lock	40
7	Cylinder valve spring	20	46	Seer pin	20
8	Cylinder valve	20	47	Knocker lock spring	20
9	Valve stopper	20	48	Knocker	40
10	Piston cup	50	49	Hammer	80
11	Cylinder spring	20	50	Hammer roller	80
12	Screw M 3 \times 8	10	51	Hammer torsion	20
13	Piston	400	52	Seer	60
14	Screw 2.6 \times 8	10	53A	Knocker spring	20
15	Outer barrel	150	53B	Seer torsion	20
16	Inner barrel	120	54	Frame	500
17	Chamber cover (right)	100	55	Safety plate	120
18	Chamber cover (left)	100	56	Magazine catch spring	20
19	O ring ϕ 2.44 \times ϕ 0.58	10	57	Front fix pin	20
20	Trajectory adjust dial	20	58	Magazine catch	30
21	Screw 2 \times 6	10	59	Rear fix pin	20
22	Adjust lever	40	60	Slide lock	60
23	Chamber	80	61	Magazine head	50
24	Recoil guide	100	62	Magazine gasket	60
25	Recoil guide bush	60	63	Magazine head pin	20
26	Recoil spring (large)	30	64	Gas valve	120
			65	Magazine case	400
			66	Follower	30
29	Recoil end	20	67	Follower spring	40
30	Front chassis	200	68	Base stopper	20
31	Screw ϕ 2.6 \times 12	10	69	Magazine floor plate	150
32	Rivet pin	20	70	O ring ϕ 18 \times ϕ 2	20
33	Trigger pin sleeve	20	71	Magazine end	160
34	Trigger bar spring	20	72	Filling valve	50
35	Trigger bar	120	73	O ring ϕ 2.8 \times ϕ 1.9	10
36	Trigger	80	74	Washer ϕ 7 \times ϕ 3.1	10
37			75	Screw M 3 \times 50	20
38	Trigger pin	20	76	Base stopper pin	20
39	Slide stop lever spring	20			