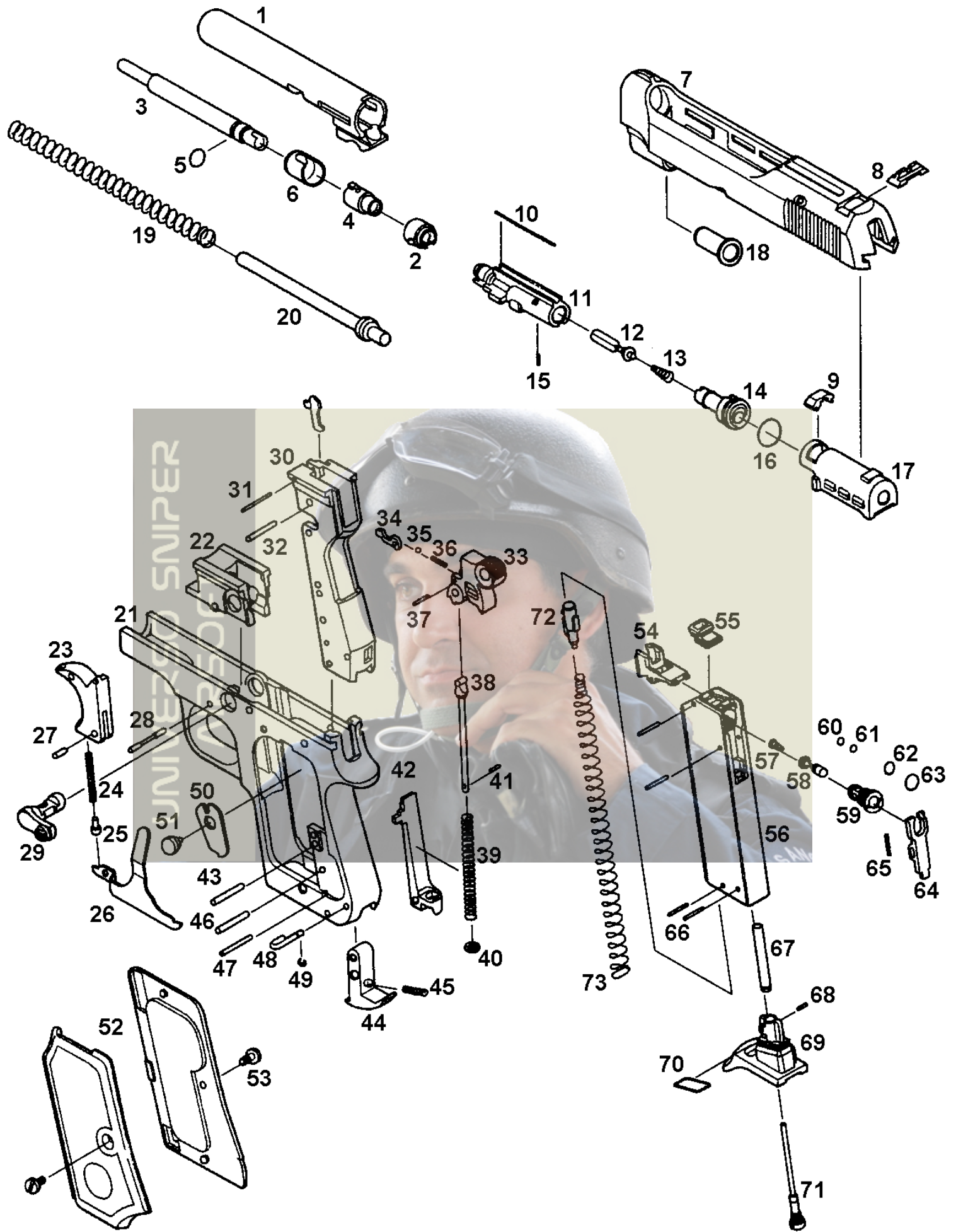


PARTS LIST FOR BERETTA M1934



No,	Parts No	Parts name	Price(¥)	No,	Parts No	Parts name	Price (¥)
1	BT-AN-001	Outer barrel	2,000	38	BT-AN-038	Main spring guide	500
2	BT-AN-002	Chamber cap	300	39	BT-AN-039	Main spring	300
3	BT-AN-003	Inner barrel	2,000	40	STD-567	Main spring washer	100
4	BTA-306	Hop chamber	700	41	STD-123	Main spring lock pin (1.5 x 6)	100
5	STD-025	Inner barrel O-ring (8x6x1)	100	42	BT-AN-042	Sear	500
6	BT-AN-006	Chamber coler	400	43	BT-AN-043	Sear pin	100
7	BT-AN-007	Slide HW	3,200	44	BT-AN-044	Magazine catch	500
8	BT-AN-008	Rear sight	300	45	BT-AN-045	Magazine catch spring	200
9	BT-AN-009	Nozzle spring guide	200	46	BT-AN-046	Magazine catch pin	100
10	BT-AN-010	Nozzle spring	200	47	BT-AN-047	Magazine catch lock pin	100
11	BT-AN-011	Loading nozzle	1,000	48	BT-AN-048	Lanyard ring	200
12	BT-AN-012	Floating valve	300	49	STD-523	Lanyard ring E-ring	100
13	5090	Floating valve spring	200	50	BT-AN-050	Sear plate	200
14	BT-AN-014	Piston	500	51	BT-AN-051	Sear plate pin	200
15	STD-103-	Nozzle lock pin	100	52	BT-AN-052	Grip (L/R set)	1,600
16	STD-009	Piston ring (S-10)	100	53	BT-AN-053	Grip screw	140x2
17	BT-AN-017	Breech block	1,000	54	BT-AN-054	Magazine rip	500
18	BT-AN-018	Slide sleeve	300	55	BT-AN-055	Gas route packing	200
19	BT-AN-019	Recoil spring	300	56	BT-AN-056	Magazine case	1,800
20	BT-AN-020	Recoil spring guide	700	57	5253	Valve spring	200
21	BT-AN-021	Frame HW	3,000	58	BT-AN-058	Valve	800
22	BT-AN-022	Front chassis	1,000	59	BT-AN-059	Valve sleeve	800
23	BT-AN-023	Trigger	600	60	STD-028	Valve O-ring (5x3x1)	100
24	BT-AN-024	Trigger spring	200	61	STD-021	Valve O-ring (5x3x1)	100
25	BT-AN-025	Trigger plunger	200	62	STD-024	Valve sleeve packing (8x6x1)	100
26	BT-AN-026	Trigger bar	600	63	STD-025	Valve sleeve packing (9x7x1)	100
27	STD-143-	Trigger bar pin (2x5SP)	100	64	BT-AN-64	Valve lock	500
28	BT-AN-028	Trigger pin	100	65	8073	Valve lock spring	100
29	BT-AN-029	Safety lever	500	66	STD-184	Magazine lock pin (2x6)	100x4
30	BT-AN-030	Rear chassis	1,500	67	BT-AN-67	Base pipe	300
31	STD-128	Chassis pin (1.5x10SP)	100	68	STD-184	Base pipe lock pin (2x6)	100
32	BT-AN-032	Hammer pin	100	69	BT-AN-069	Magazine base	600
33	BT-AN-033	Hammer	700	70	BT-AN-070	Base packing	200
34	BT-AN-034	Firing plate	300	71	9843	Charging valve	700
35	STD-506	Firing plate plunger	200	72	BT-AN-072	Magazine follower	300
36	BT-AN-036	Firing plate spling	200	73	BT-AN-073	Magazine spring	300
37	STD-123	Firing plate pin (1.5 x 6)	100				