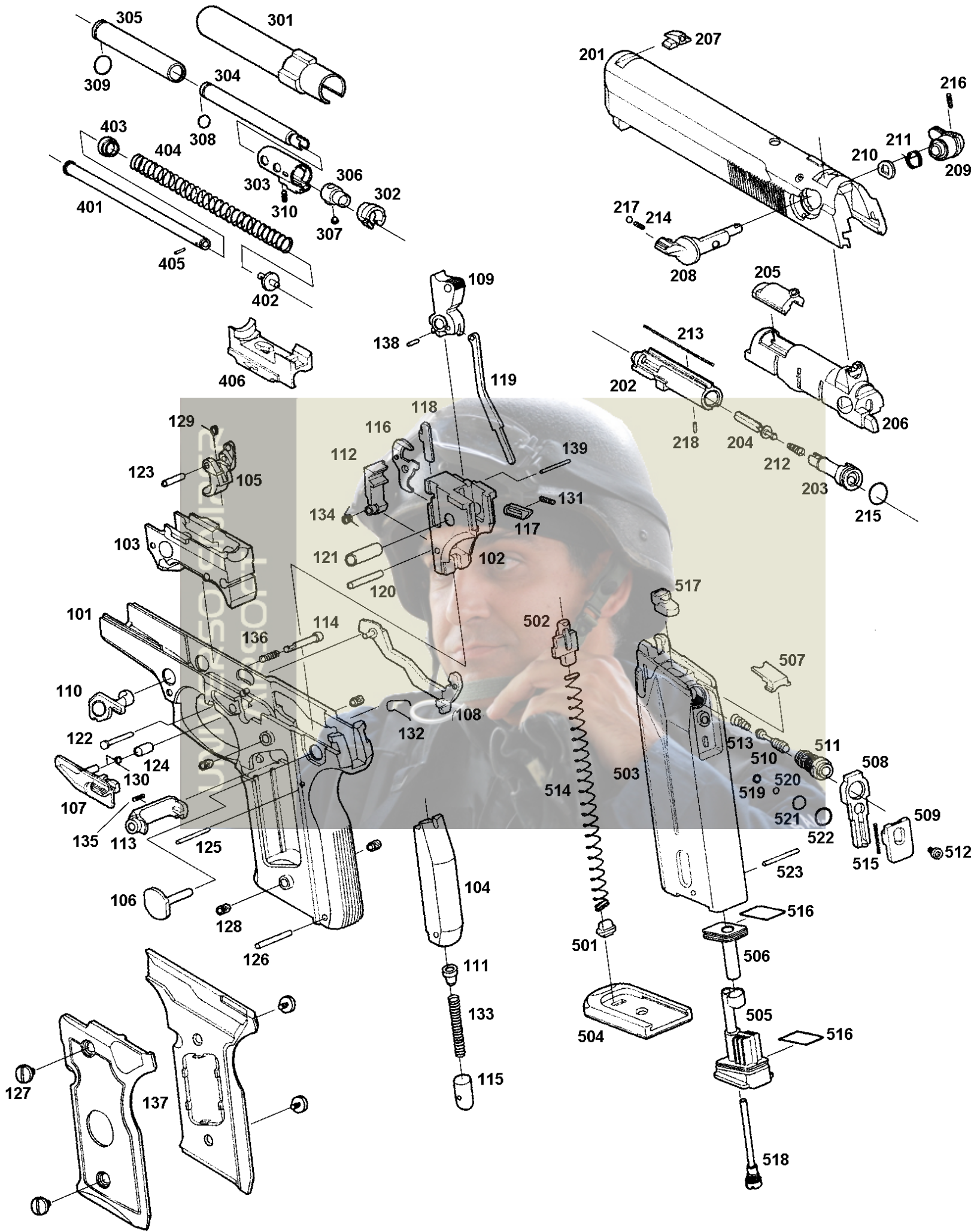


PARTS LIST FOR BERETTA M8045 COUGAR F



No,	Parts No	Parts name	Price (¥)	No,	Parts No	Parts name	Price (¥)
101	BTA-101	Frame HW	4,000	210	BTA-210	De-cocking cum	200
102	BTA-102	Hammer housing	1,000	211	BTA-211	Safety return spring	200
103	BTA-103	Chassis	1,500	212	BTA-212	Floating valve spring	200
104	BTA-104	Main spring housing	800	213	BTA-213	Nozzle spring	200
105	BTA-105	trigger	600	214	BTA-214	Safety spring	100
106	BTA-106	Hammer pin	400	215	BTA-215	Piston ring (10 x1.4)	100
107	BTA-107	Slide stop	600	216	BTA-216	Safety lever lock screw	60
108	BTA-108	Trigger bar	500	217	BTA-217	Safety ball (3)	40
109	BTA-109	Hammer	800	218	BTA-218	Nozzle lock pin (1.5x7)	100
110	BTA-110	Disassembling latch	600	301	BTA-301	Outer barrel	1,000
111	BTA-111	Hammer spring sleeve	300	302	BTA-302	Chamber cap	300
112	BTA-112	Sear	300	303	BTA-303	Inner barrel guide	400
113	BTA-113	Magazine catch	500	304	BTA-304	Inner barrel	2,000
114	BTA-114	latch button	300	305	BTA-305	Barrel sleeve	400
115	BTA-115	Hammer spring cap	200	306	BTA-306	Hop chamber	700
116	BTA-116	De-cocking lever	300	307	BTA-307	Hop plunger	200
117	BTA-117	Firing plate	200	308	STD-024	Inner barrel O-ring (8x6x1)	100
118	BTA-118	Valve lock release	300	309	STD-026	Barrel sleeve O-ring (10x8x1)	100
119	BTA-119	Hammer spring guide	200	310	STD-222	Hop adjust screw (M3x4)	100
120	BTA-120	Sear sleeve	100	401	BTA-401	Recoil spring guide	1,000
121	BTA-121	Hammer sleeve	200	402	BTA-402	Recoil spring guide lock	300
122	BTA-122	Trigger pin	200	403	BTA-403	Recoil spring guide ring	300
123	BTA-123	Trigger sleeve	100	404	BTA-404	Recoil spring	400
124	BTA-124	Frame sleeve	100	405	STD-123	Recoil spring lock pin (1.5x6)	100
125	BTA-125	Sear pin	100	406	BTA-406	Disconnecting block	800
126	BTA-126	Housing pin	100	501	BTA-501	Magazine bottom lock	200
127	BTA-127	Grip screw	100x4	502	BTA-502	Magazine follower	300
128	BTA-128	New grip screw nut	100x4	503	BTA-503	Magazine case	2,500
129	BTA-129	Trigger spring	200	504	BTA-504	Magazine base	500
130	BTA-130	Slide stop spring	200	505	BTA-505	Magazine bottom	500
131	BTA-131	Firing plate spring	200	506	BTA-506	Magazine plug	500
132	BTA-132	Trigger bar spring	200	507	BTA-507	Packing guide	300
133	BTA-133	Hammer spring	300	508	BTA-508	Valve guide	500
134	BTA-134	Sear spring	200	509	BTA-509	Valve lock	500
135	BTA-135	Magazine catch spring	100	510	BTA-510	Valve	800
136	BTA-136	latch spring	200	511	BTA-511	Valve sleeve	800
137	BTA-137	Grip (L/R set)	800	512	4517	Valve guide screw	100
138	BTA-138	Hammer spring guide pin (2x8)	80	513	BTA-212	Valve spring	200
139	STD-150	Firing plate pin	100	514	BTA-514	Magazine spring	400
201	BTA-201	Slide HW	3,500	515	BTA-515	Valve lock spring	200
202	BTA-202	Loading nozzle	1,000	516	BTA-516	Magazine packing	200x2
203	BTA-203	Piston	500	517	BTA-517	Gas route packing	200
204	BTA-204	Floating valve	400	518	9843	Charging valve	700
205	BTA-205	Nozzle spring guide	200	519	STD-001	Valve O-ring front (S-3)	100
206	BTA-206	Breech block	1,500	520	STD-021	Valve O-ring rear (5x3x1)	100
207	BTA-207	Front sight	500	521	STD-025	Sleeve O-ring front (9x7x1)	100
208	BTA-209	Safety lever E (left)	600	522	STD-026	Sleeve O-ring rear (10x8x1)	100
209	BTA-209	Safety lever (right)	500	523	STD-151	Magazine base pin (2x20)	100x2