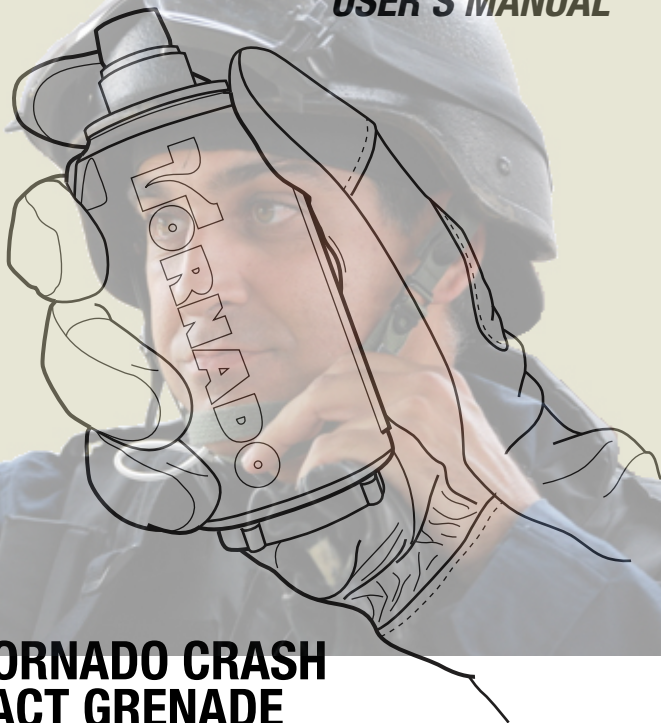


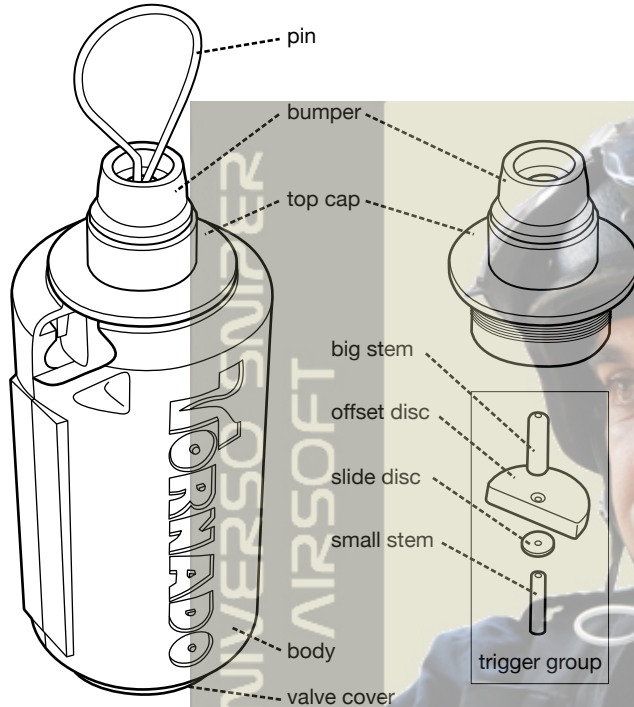
AIRSOFT  INNOVATIONS

USER'S MANUAL



**AI TORNADO CRASH
IMPACT GRENADE**

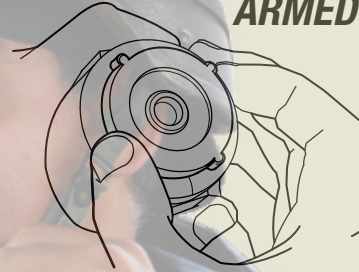
WWW.AIRSOFT-INNOVATIONS.COM



!PRIMARY WARNINGS!

- This product is not a toy. Familiarize yourself with this manual before use. Insist that other players practise safe grenade handling.

ARMED



SAFE



- This product is intended for use with propane or HFC134a. Do not use high pressure propellants eg. CO₂, HPA.
- Do not expose this product to temperatures exceeding 40°C/104°F. Do not fill or use grenade near open flames.
- Do not deploy this grenade in public places. Treat it as you would treat a realistic rifle replica.
- Do not modify this product or attempt to defeat its safety features. Over pressure failsafe measures are included in this product to protect YOU.

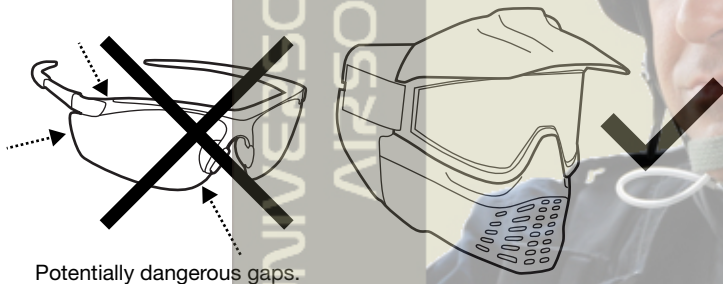
PLEASE READ CAREFULLY

ASSUMPTION OF RISKS

THERE IS A SERIOUS RISK OF PERSONAL INJURY, DEATH OR PROPERTY DAMAGE ARISING OUT OF THE USE OR MISUSE OF THIS PRODUCT. BY USING THIS PRODUCT, YOU AGREE TO FREELY ACCEPT AND FULLY ASSUME ALL SUCH RISKS.

SAFETY

- Be considerate. Toss grenades gently. Do not throw grenades directly at other players.
- Do not handle armed grenades in safe areas. Disarm grenades by unscrewing bottom valve cover.
- Treat any grenade as a loaded and armed grenade. Loaded, unloaded, duds/malfunctioning and expended grenades must be disarmed before returning to the safe area.



WARNING

This product has no safe direction, all players must wear ASTM F1776-01 compliant full coverage goggles. Safety glasses are unacceptable eye protection.

IMPORTANT

Make sure grenade is depressurized before and after every use by following this pressurization check. Remove the valve cover of grenades collected after a skirmish before entering the safe area.

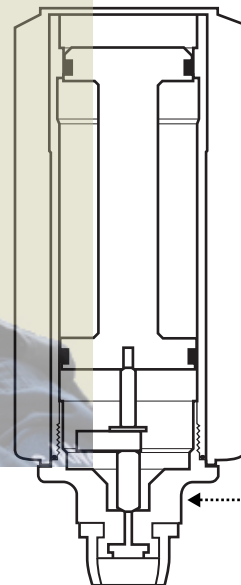
OPEN POSITION

Look for a gap between the shuttle and body tube to ensure your grenade is in valve open position. **Your grenade is safe to disassemble and rearm.**



CLOSED POSITION

If gap is not present, your grenade is in valve closed position. This means it might still be pressurized and armed. **DO NOT REMOVE TOPCAP!**

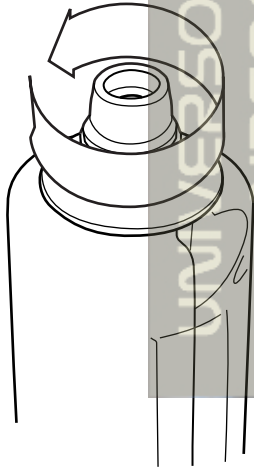


LOADING

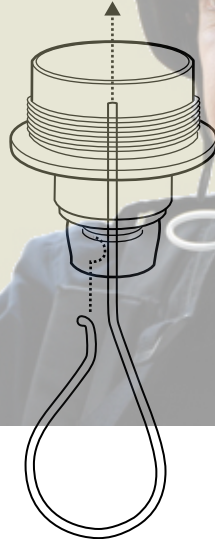
WARNING

Make sure grenade is disarmed and depressurized before starting reloading procedure. See instructions on page 5.

1.

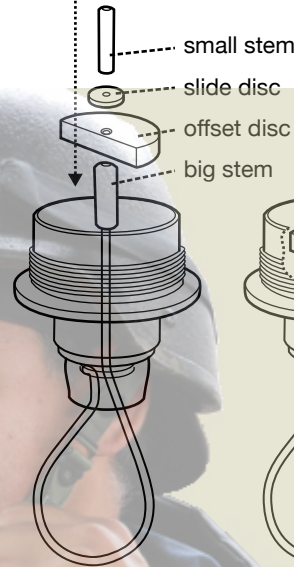


2.

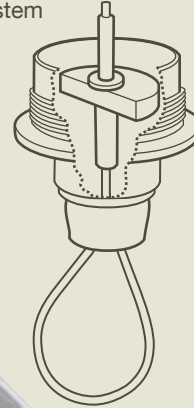


1. Unscrew topcap.
2. Insert pin, catching the end on the inner groove.

3.



4.

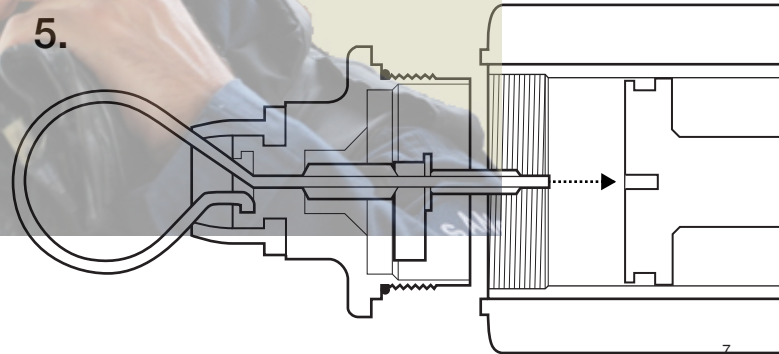


WARNING

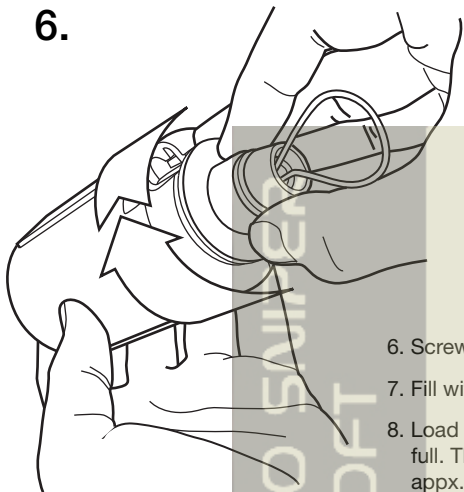
Verify that inside of the grenade is clean, do not reload with dirty gloves or hands.

3. Thread trigger parts onto pin.
4. Like this.
5. Align top cap so that the pin fits into the hole in the shuttle.

5.

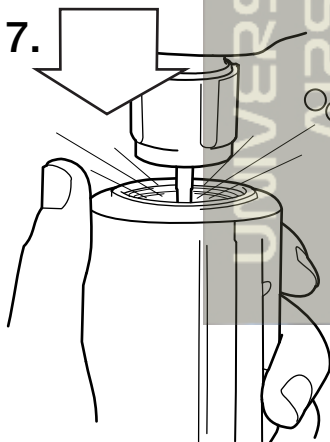


6.

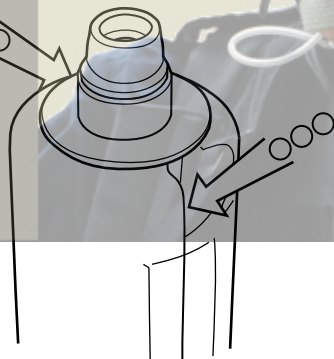


- 6. Screw on top cap.
- 7. Fill with propane or duster gas.
- 8. Load bb's into bb spirals until full. The Tornado Grenade holds appx. 200bb's.

7.



8.

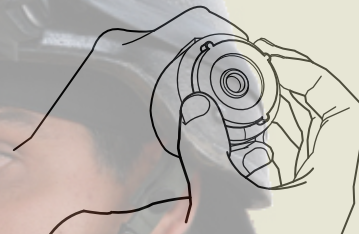


DEPLOYMENT

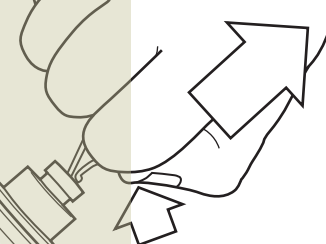
1. UPON ENTERING LIVE FIRE AREA:

2. DEPLOYMENT:

Press pin and pull it out.



Screw on valve cover to arm grenade.



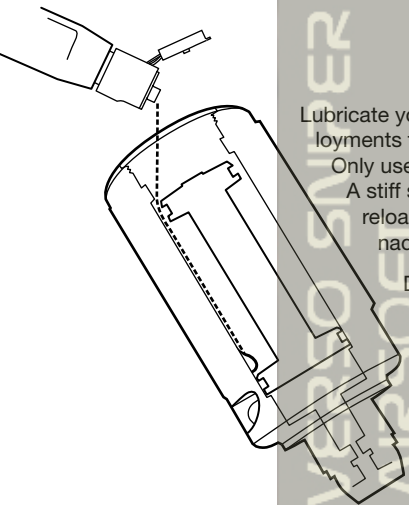
Toss grenade at a solid surface eg:

- Floors (concrete, wood, hard packed earth, short grass).
- Walls and stairs.

Avoid throwing grenade against sand, long grass and helmets.

MAINTENANCE

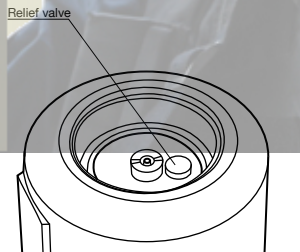
AIRSOFT INNOVATIONS



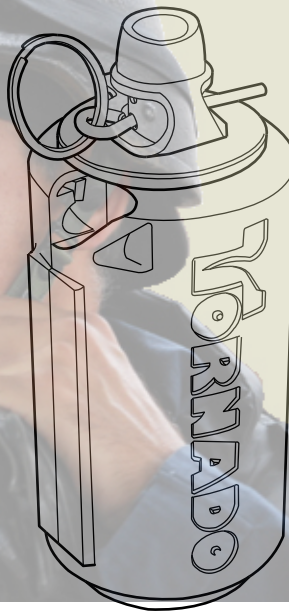
Lubricate your AI grenade once every five deployments to maintain consistent performance. Only use AI supplied Grenade Silicone Oil. A stiff shuttle that is difficult to reset when reloading is an indication that your grenade needs lubrication.

Drip two drops of **Airsoft Innovations Grenade Oil** through the opening between the shuttle and valve body. Try to drip oil directly into the gas chamber.

Your Airsoft Innovations Tornado grenade features an over-pressure relief valve to safely release excess pressure. If your grenade is venting propellant, visit www.airsoft-innovations.com for resetting instructions. If you use the correct propellants, you should never have this problem.



TORNADO TIMER GRENADE



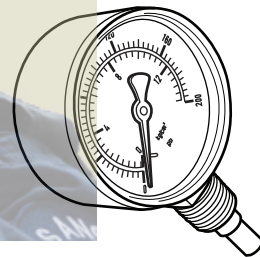
The original AI Tornado Grenade. Explodes on a 1.5 or 3 second timer.

GUNGAS KIT



Save on gbb propellant with our famous propane and duster adaptors bundled with light-weight silicone oil.

GAS PRESSURE GAUGE



Check the pressure of your propellants and optimize your gbb or tornado's performance!



We at Airsoft Innovations stand by our products.
Check out www.airsoft-innovations.com for:

- Our full line of products and accessories
- Replacement parts
- Instructions
- Video tutorials
- Troubleshooting guides
- Technical articles
- Foreign language downloads!

Contact one of our friendly Canadians!

Support: problems@gungas.com

Dealer inquiries: wholesale@gungas.com

WWW.AIRSOFT-INNOVATIONS.COM 