

WWW.APSAIRSOFT.COM

NO OTHERS COMPANY OUT CAN MATCH OUR LEVEL AND DEGREE OF CONCEPTION.

APS CONCEPTION, WE SET THE STANDARD FOR OTHERS TO FOLLOW.

COMPROMISE IS NOT AN OPTION



SAFETY HANDLING

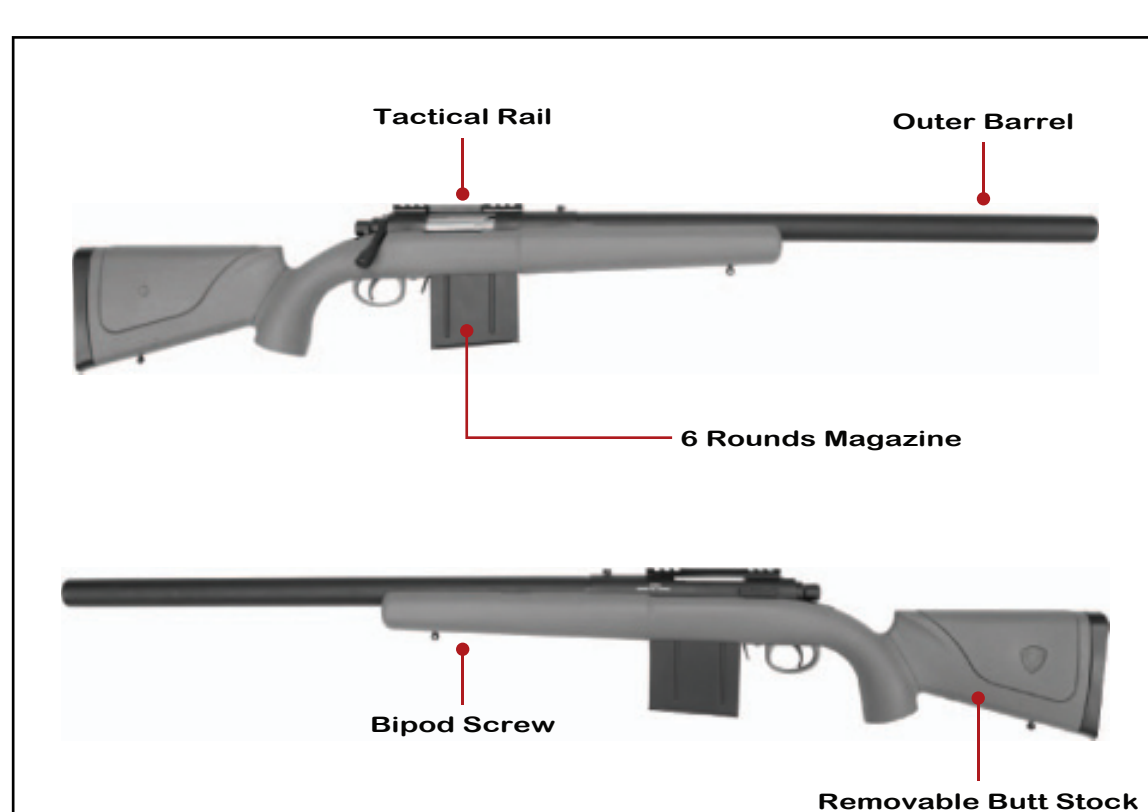
WARNING



This sport gun is developed for serious sport shooting only. As the Airsoft Gun has the potential risk of serious injury such as blindness and damage to the property, please read the Handling & Instruction manual before use.

- The APM50 Gun is capable of shooting a 6mm diameter BB. Operate the Airsoft Gun with caution and pay attention to safety.
- During a game, always put your goggles or facemask on. Failure to wear eye protective gear in the worst case will cause blindness.
- Play attention to and take care to not hit bystanders within the estimated dangerous firing zone.
- Never shoot any items that subject to breakage. (Glasses, lamps, car, gas tanks, etc.)
- Never insert items other than an airsoft BB into the magazine or gun barrel.
- The gun must not be operated after drinking alcohol to avoid possible danger.
- Always store or place out of the reach of children.
- Having a positive playing demeanor is essential.
- Select a safe place for operating the Airsoft Gun. Avoid places where people and cars pass across or third persons are around.
- Always put the gun in a case or bag when you are carrying it. Avoid giving rise to public panic.
- BB bullets maybe fire out even the magazine is removed. Direct the muzzle towards a safe area. Pull the trigger to confirm no bullets remain in the gun. Then attach the protective plug to the muzzle when unused.
- Remove the magazine from the gun when unused.

DESCRIPTION



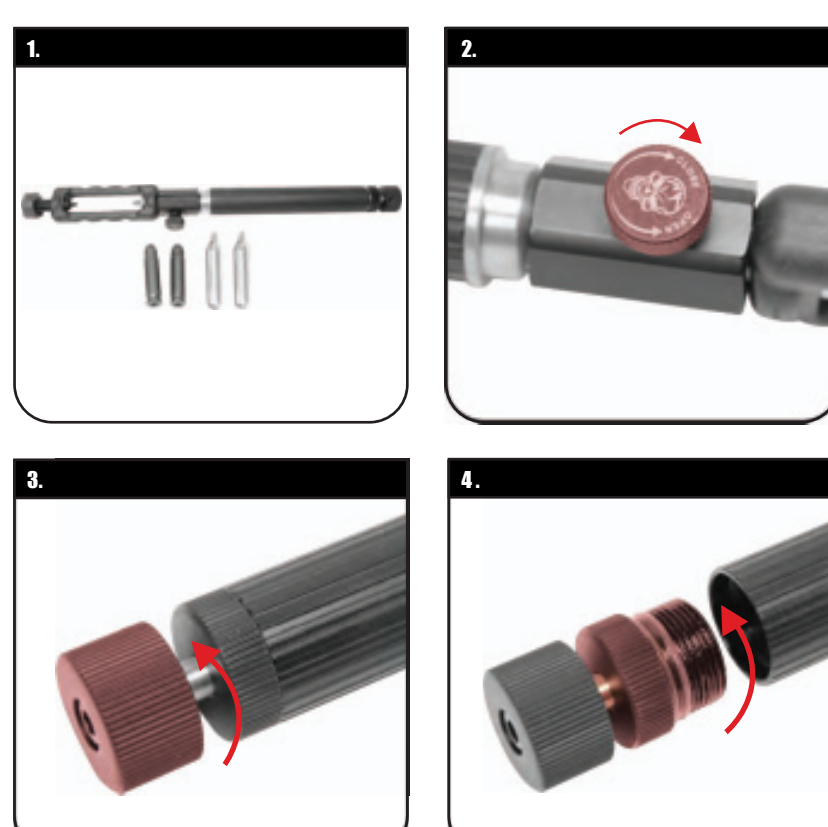
SAFETY/FIRE SELECTOR

CAUTION

- Never operate the safety lever while pulling the trigger.
- Hardly pull the trigger with the selector being set to "SAFE" may damage the gun.
- Always set the safety lever to "SAFE" unless you are ready to fire.
- When you are not firing the gun or during storage, always set the selector to "SAFE" position.



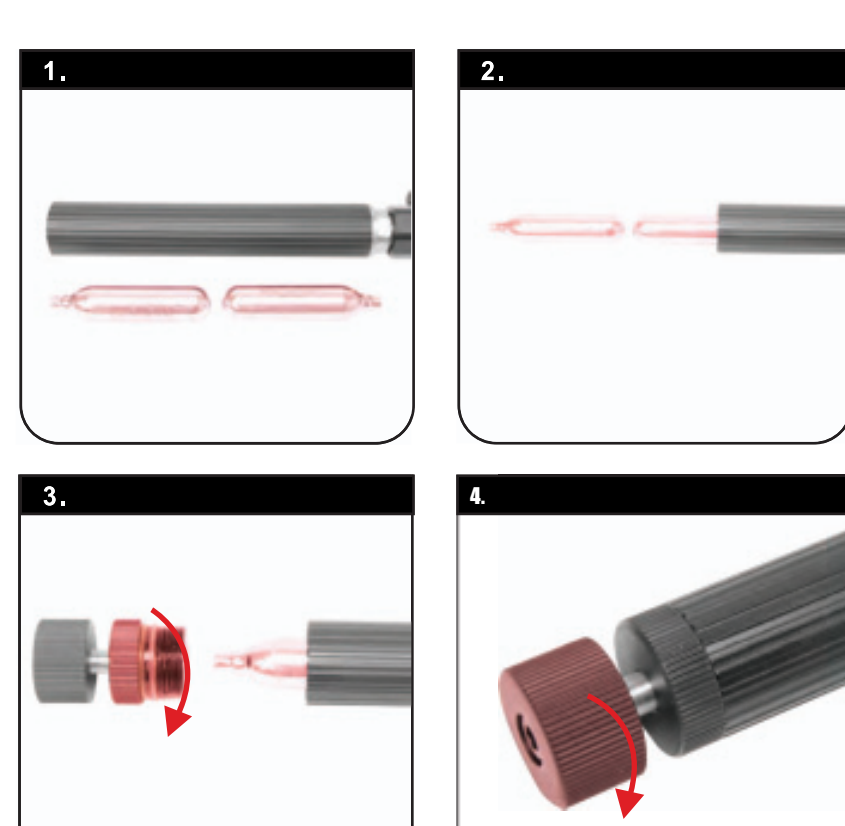
USING THE CO2 REFILL ADAPTER



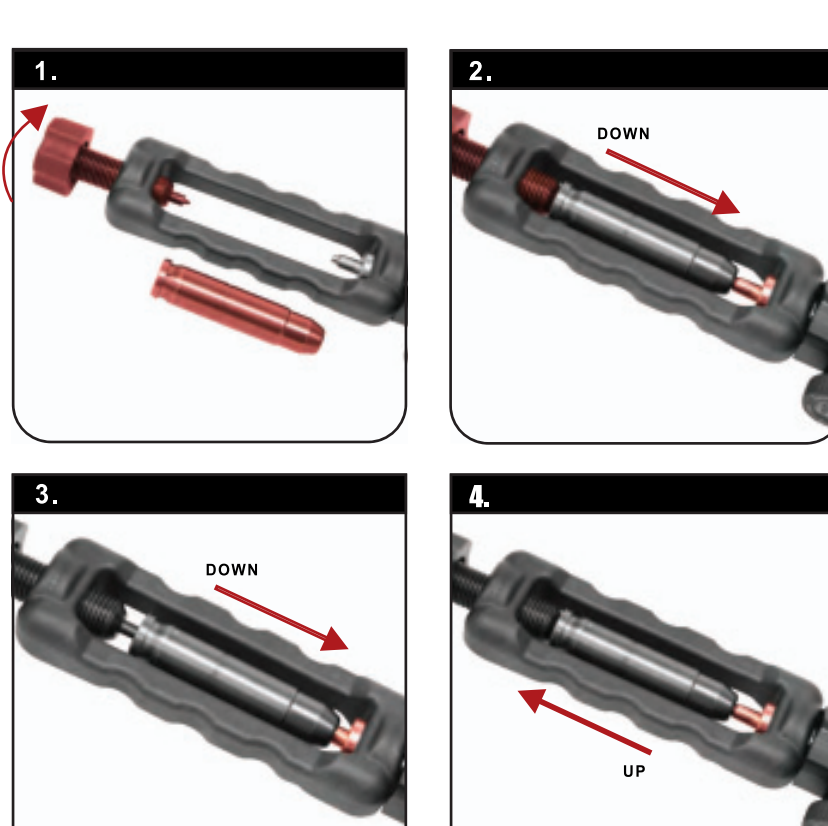
- Prepare to Refill
- Check the valve is closed before you insert the Co2 cartridge
- Extend the End Cap by turning it Anti-clockwise
- Remove the End Cap completely

CHARGING THE CO2

- Insert the Co2 Cartridge in the appropriate direction
- Put the first cartridge
- Put the second cartridge and close the end cap completely
- Turn the end cap extension clockwise until it puncture the Co2 cartridge



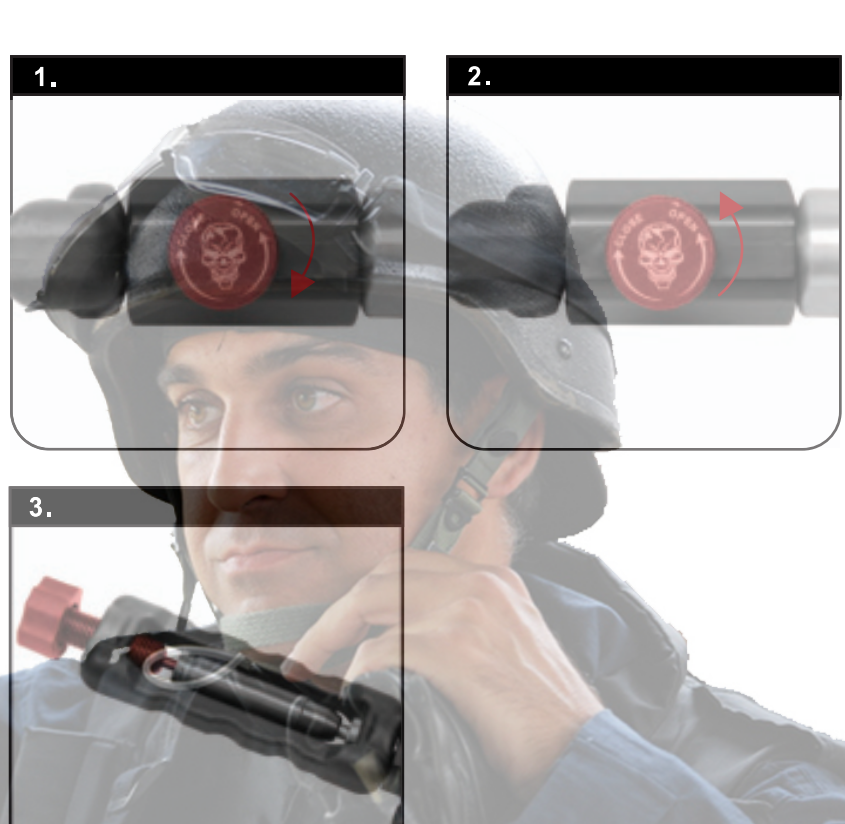
USING THE CO2 REFILL ADAPTER



- Adjust the top and place the Co2 bullet inside
- Place the Co2 Bullet upside down to the refill adapter as photo and adjust the top until the Co2 bullet is secured in the adapter
- Push the co2 bullet down
- Push the co2 up (To open the valve inside the Bullet)

USING THE CO2 REFILL ADAPTER

- Open the valve of the adapter to start filling the Co2 (Filling around 3 sec for each bullet is good enough)
- Close the valve after filled
- Push the Co2 bullet down again and adjust the top loosen the Co2 bullet



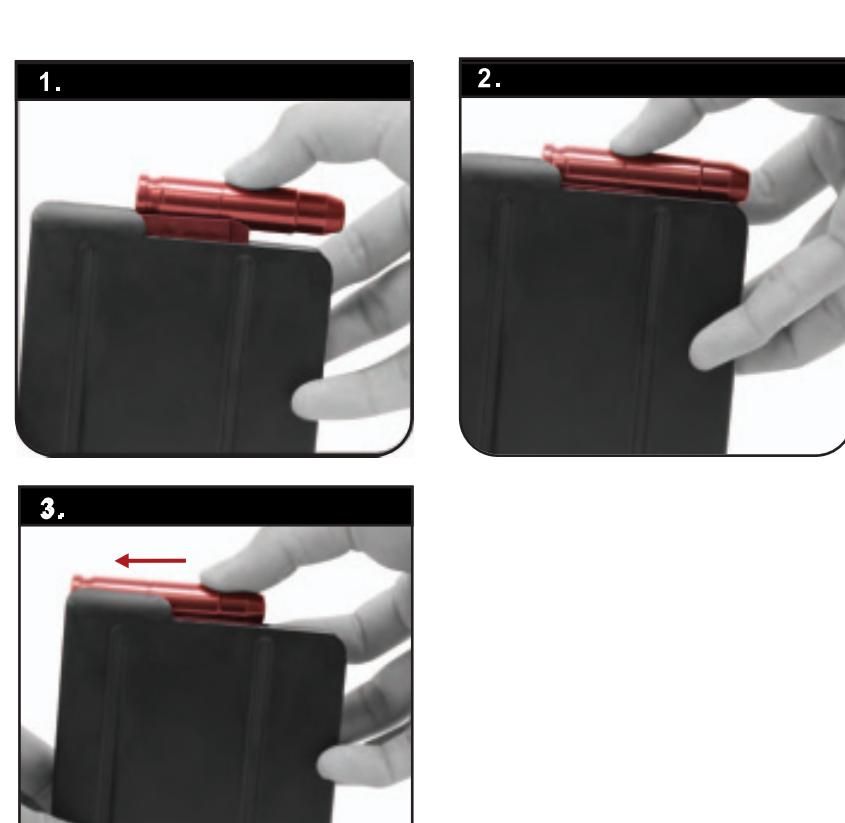
FILLING THE MAGAZINE

- Check the Cartridge (core pin up if charged with Co2) (core pin down if empty)
- Insert a 6mm Plastic BB into the charged cartridge (1 plastic BB for 1 cartridge only)



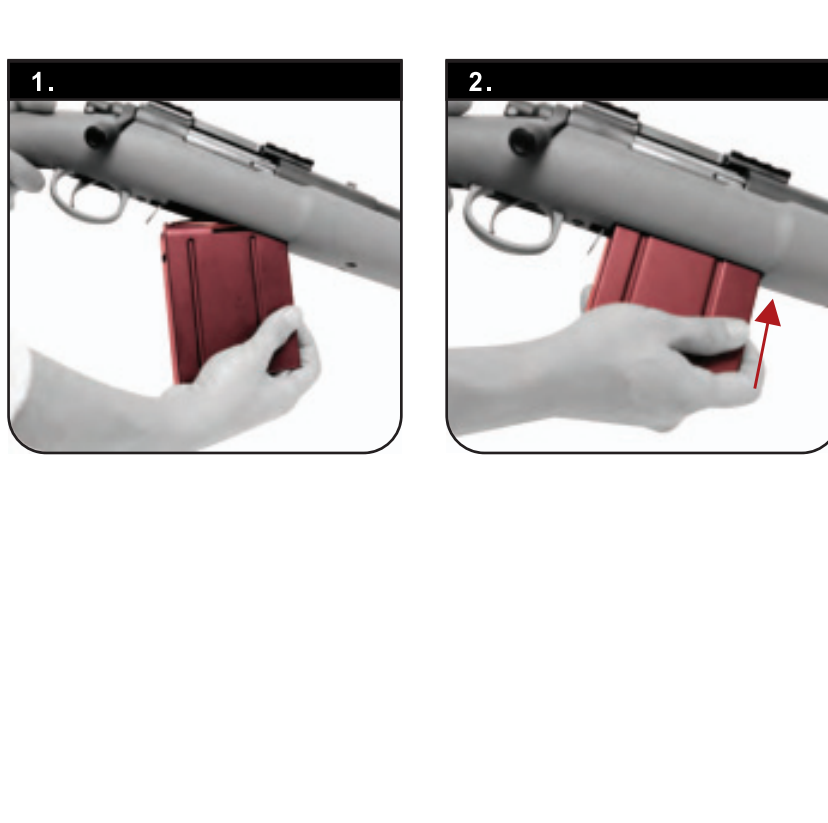
FILLING THE MAGAZINE

- Insert the charged cartridge into the magazine one by one
- Push down the cartridge
- Slide the cartridge backward to secure it



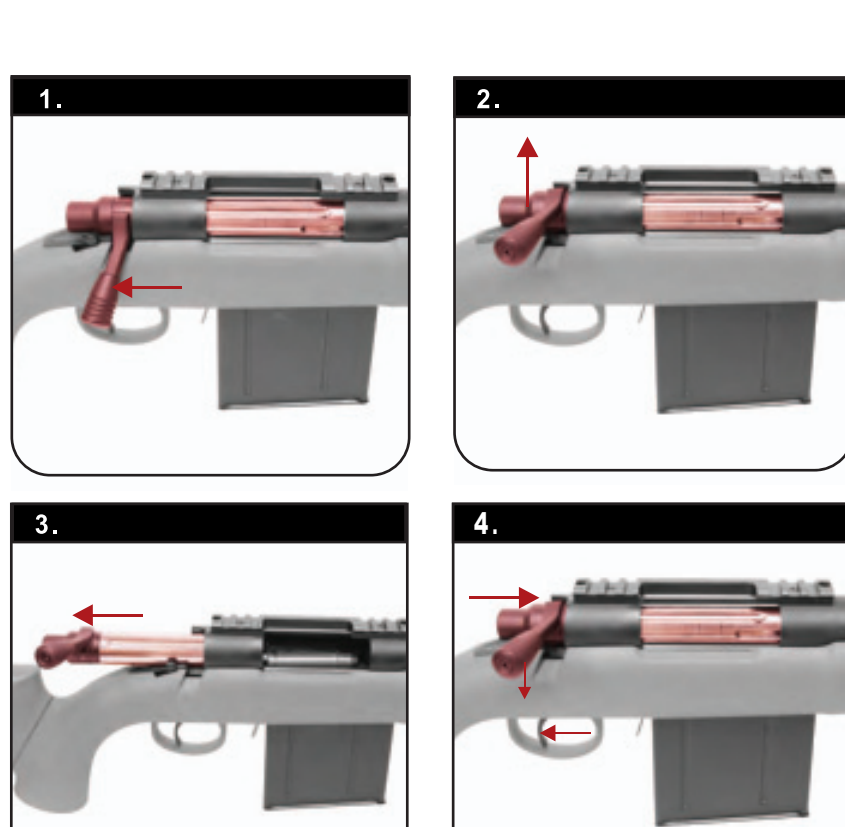
FILLING THE MAGAZINE

- Insert the filled magazine into the housing slantingly
- Push the magazine upward and make sure it is secured



COCKING

- Locate the bolt handle
- Lift up the bolt handle
- Pull the bolt all the way backward until the chamber is opened
- Push the bolt all the way forward and lift down the bolt handle completely, otherwise you cannot pull the trigger



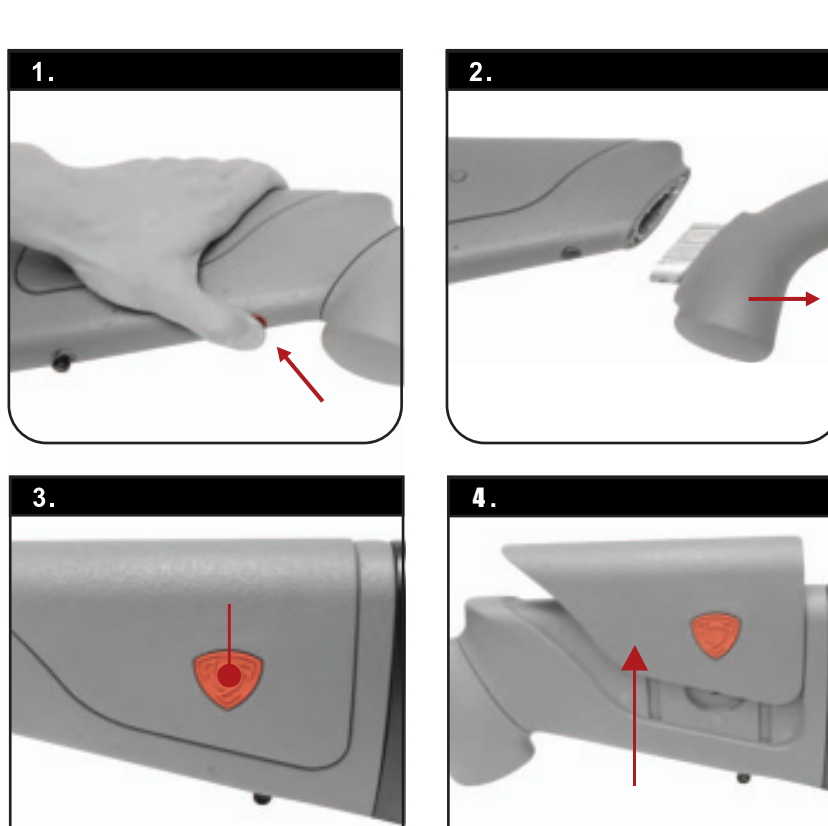
FILING OPERATION (REMOVE THE MAGAZINE)

- Safe
- Press and hold down the magazine release button
- Remove the magazine



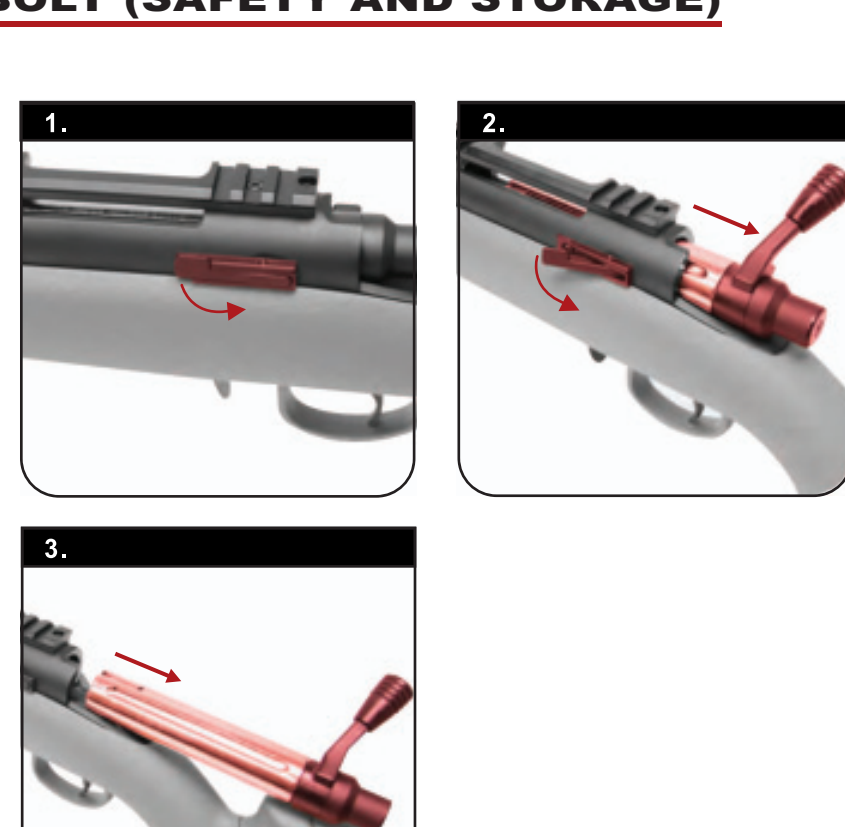
INSTALL / REMOVE THE BUTT STOCK

- Locate the butt stock release button. Insert or pull out the butt stock by holding down the release button
- Storage of this gun is easy and convenience
- You can adjust the height of the creek position by pressing down the APS conception button
- 3 heights level adjustable to best fit your creek



REMOVE THE BOLT (SAFETY AND STORAGE)

- User can completely remove the bolt by pulling out the bolt lock switch, lift up the bolt handle and slide the bolt out



NOTE

WARNING
OBSERVE SAFE AIRSOFT HANDLING PRACTICES AT ALL TIMES. FAILURE TO DO SO MAY RESULT IN SERIOUS BODILY INJURY OR DEATH. APS LIMITED SHALL NOT BE RESPONSIBLE FOR INJURY, DEATH OR PROPERTY DAMAGE RESULTING FROM FAULTY INSTALLATION, MISUSE, ILLEGAL USE OR MODIFICATION OF THIS PRODUCT.