



CMR16 CARBINE Instruction Manual

6mm Electric Semi / Full Auto System



! WARNING !!

- Adult supervision required.
- Always wear safety goggles when using this product.
- Misuse or careless handling of this product may cause injury.
- May be hazardous up to 50 meters.
- This product is intended for users 18 years or older.
- Read all instructions before using this product.
- The buyer and the user of this product shall adhere to all local laws regulating the usage and the ownership of airsoft guns.

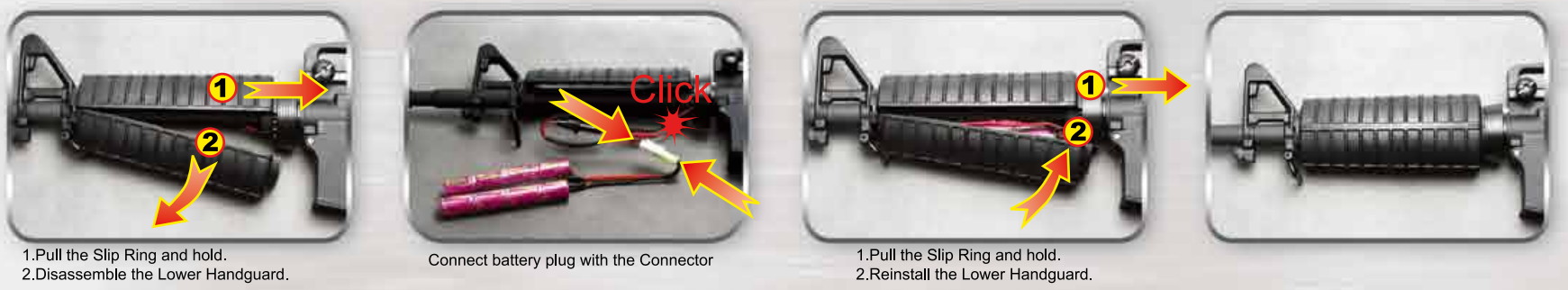
STEP 1 Check all Parts and Accessories



Please check all parts with accessories. If you lose any parts or accessories, please contact your retailer or dealer.

STEP 2 Install the Battery (Battery Optional)

- WARNING**
1. Please select quality battery with the CE approval, to avoid any un-necessary damage on your product.
 2. Please use 9.6V or 8.4V battery. If you use different voltage battery, it may damage the airsoft gun.
 3. Remove battery from device when not in use.
 4. Charge with the same type charger.
 5. Do not wet or incinerate battery, or deform positive cap.



STEP 3 Load the bbs & Install Magazine



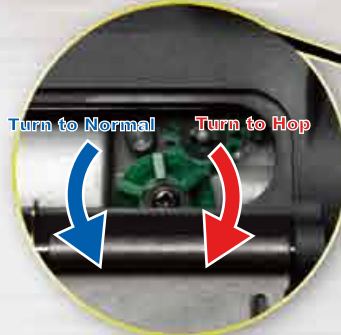
- WARNING**
- It is strongly recommended the use of G&G BB pellets only. Using low quality BB pellets will shorten product life span and void product warranty.



STEP 4 Shooting & Hop-up adjust



Hop-Up Adjustment

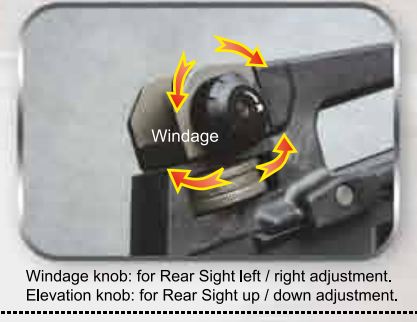


- Too much Hop-up (turn the lever toward Normal) **Wrong**
- Right best position
- Not enough Hop-up (turn the lever toward Hop) **Wrong**

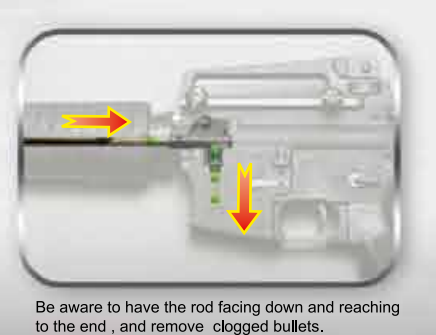


! WARNING : Keep the Selector on Safe mode until you are actually ready to shoot.

STEP 5 Rear Sight adjustment



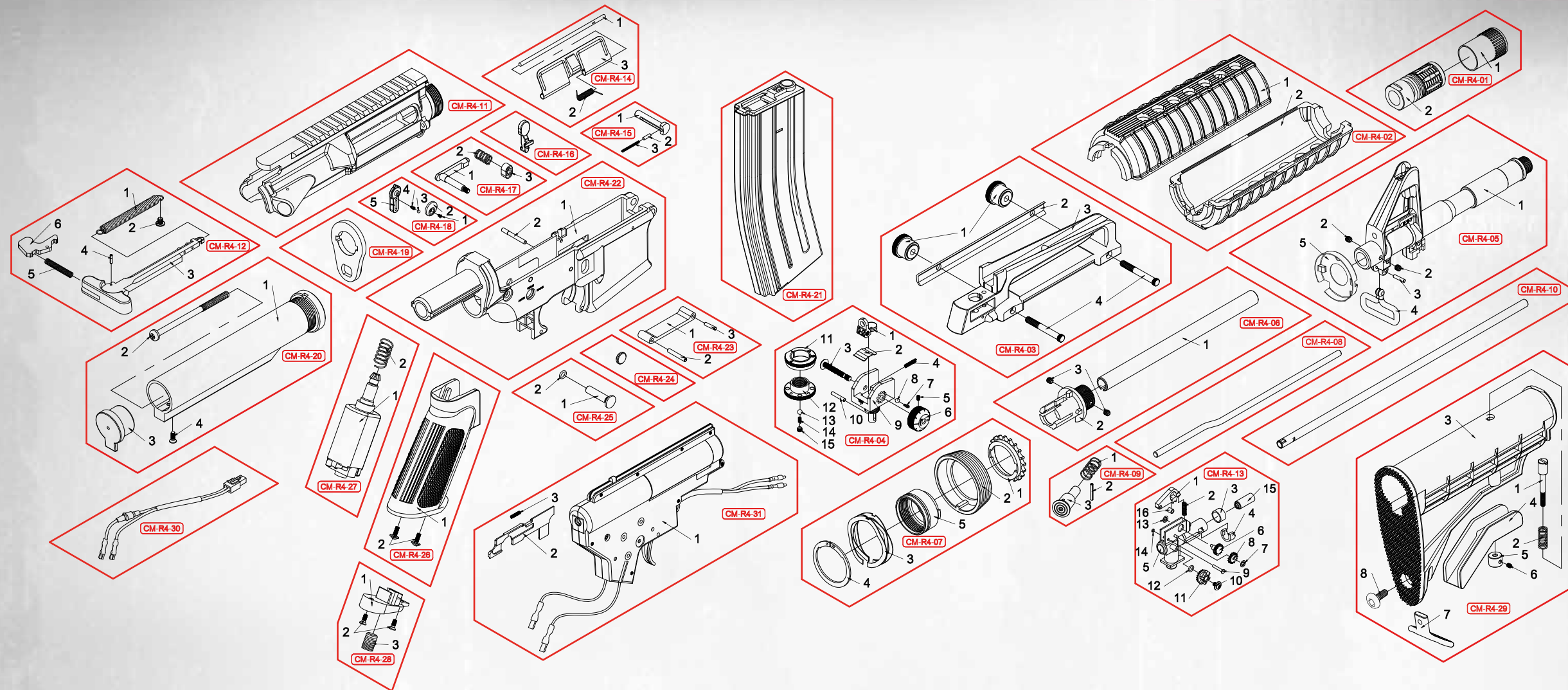
TROUBLESHOOTING



CMR16 CARBINE Instruction Manual

6mm Electric Semi / Full Auto System

EXPLODED DIAGRAM



WARNING !!

- Adult supervision required.
- Always wear safety goggles when using this product.
- Misuse or careless handling of this product may cause injury.
- May be hazardous up to 50 meters.
- This product is intended for users 18 years or older.
- Read all instructions before using this product.
- The buyer and the user of this product shall adhere to all local laws regulating the usage and the ownership of airsoft guns.

Parts List

CM-R4-01	Flash hider set	CM-R4-17	Magazine catch set
CM-R4-02	Handguard set	CM-R4-18	Selector lever set
CM-R4-03	Carry handle set	CM-R4-19	Stock washer
CM-R4-04	Rear sight set	CM-R4-20	Enhanced rod set
CM-R4-05	Front outer barrel set	CM-R4-21	Hi-cap 450R Magazine
CM-R4-06	Rear outer barrel set	CM-R4-22	Lower receiver set
CM-R4-07	Slip ring set	CM-R4-23	Trigger guard set
CM-R4-08	Piston rod	CM-R4-24	Selector
CM-R4-09	Assist knob set	CM-R4-25	Rear frame lock pin set
CM-R4-10	Inner barrel	CM-R4-26	Grip
CM-R4-11	Upper receiver set	CM-R4-27	Motor set
CM-R4-12	Charging handle set	CM-R4-28	Grip bottom set
CM-R4-13	Hop-up set	CM-R4-29	Retractable stock set
CM-R4-14	Port cover set	CM-R4-30	wire set
CM-R4-15	Front frame lock pin set	CM-R4-31	Gear Box set
CM-R4-16	Bolt catch set		

Maintenance

1 Step for local maintenance

(1.1) Maintenance by yourself:



1. Find the required parts number from the exploded diagram



2. Find the retailer or dealer closest to you from G&G website.
http://b2b.guay2.com/eng_distributors.htm



3. Purchase the maintenance parts from any retailer and repair the product yourself.
Note: Basic airsoft product maintenance skill is required.

(1.2) Maintenance by Retailer or Dealer:



1. Find your local retailer from G&G or dealer website.
http://b2b.guay2.com/eng_distributors.htm
2. Ask your local retailer or dealer about the way to maintain your airsoft gun.



Retailer or dealer provides maintenance for your airsoft gun.

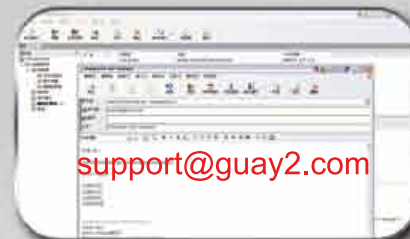
2

Step for international maintenance

Maintenance by yourself:



1. Find the required parts number from the exploded diagram



2. Write E-mail to support@guay2.com



3. Receive invoice from G&G then make payment by "PAYPAL".



4. Purchased item shipped by "EMS".



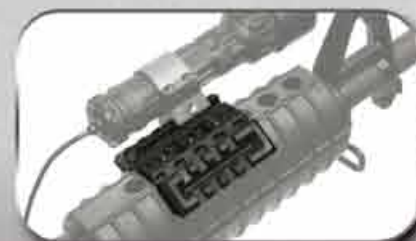
5. Receive the purchased item. Replace or maintain the product by yourself.
Note: Basic airsoft product maintenance skill is required.

Optional accessories

You can buy these accessories from your local retailer or dealer.



14MM CCW



Tactical handguard rail for CM M16



Combat Lite G&G Tactical Pack



Red Dot Sight



M4 Dot Sight (left) Model No. CM-17-011

