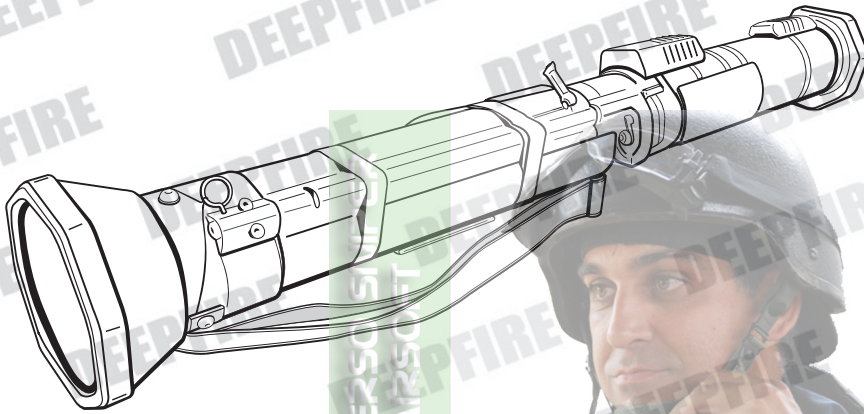
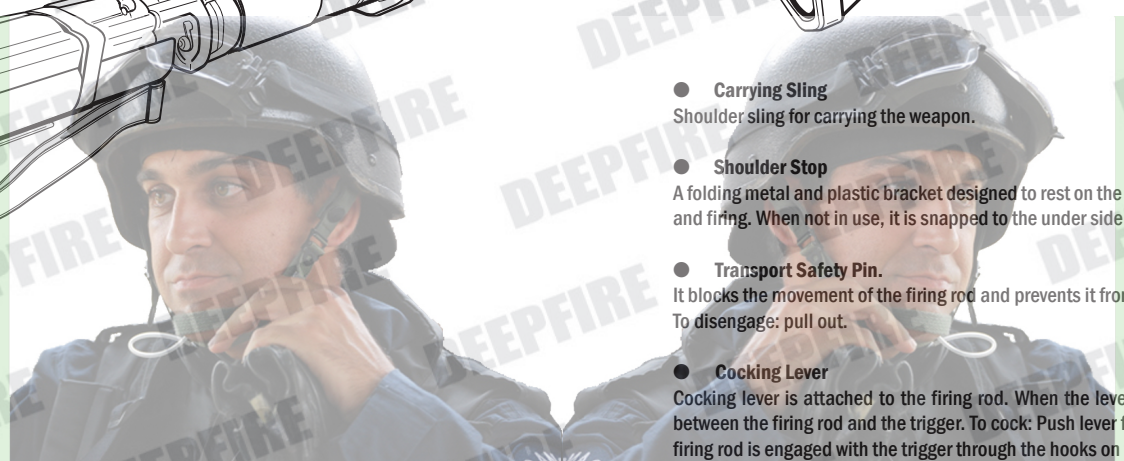
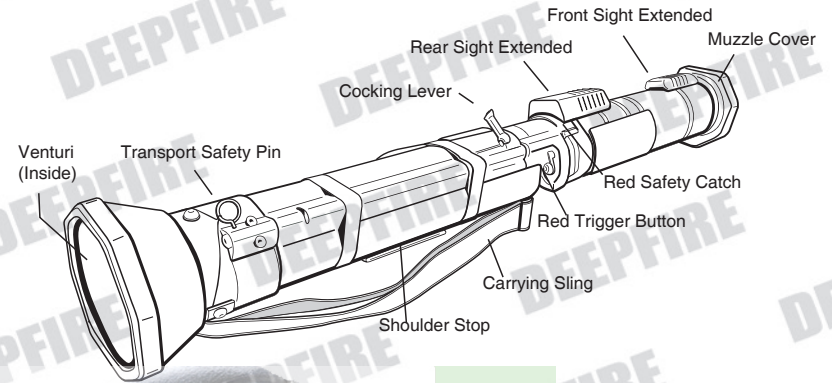




AT4



LOCATION AND DESCRIPTION OF MAJOR COMPONENTS



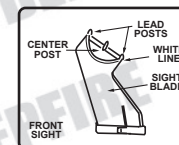
- **Carrying Sling**
Shoulder sling for carrying the weapon.
- **Shoulder Stop**
A folding metal and plastic bracket designed to rest on the gunner's shoulder to support the AT4 while aiming and firing. When not in use, it is snapped to the under side of the launcher.
- **Transport Safety Pin.**
It blocks the movement of the firing rod and prevents it from striking the percussion cap. To disengage: pull out.
- **Cocking Lever**
Cocking lever is attached to the firing rod. When the lever is in the SAFE position, there is no engagement between the firing rod and the trigger. To cock: Push lever forward and down. When the weapon is cocked, the firing rod is engaged with the trigger through the hooks on the front part of firing rod and trigger.
- **Red Safety Catch**
Red safety catch is located in forward end of firing mechanism. The red safety catch consists of a steel rod that prevents the firing rod from striking the firing pin. To disengage: press handle with fingertips of righthand.
- **Red Trigger Button**
Red trigger button is a button located on the right side of the tube. To fire, apply pressure straight forward with right thumb in a steady, smooth movement.

HANDLING CAUTIONS AND INSTRUCTION MANUAL

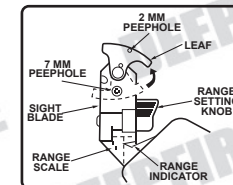
Users Restricted to 18 Years of age or older

	WARNING	
Only for 18years of age or older	Operation of this Toy for competition use is restricted to use is restricted to users of 18years of age or older.	
Injury caution	Since plastic BB bullets reach 50 to 60 meters, careless shooting maycause eye damage or other injuries.	
Careful reading of Handling cautions and Instruction manual	Always read through this HANDLING CAUTIONS AND INSTRUCTION MANUAL carefully before operation Operate the Toys with full recognition of warning and cautions.	

● Front Sight



● Rear Sight

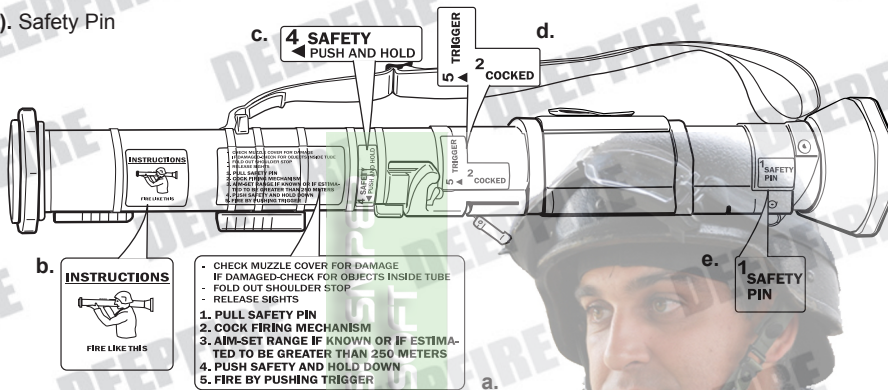


INSTRUCTION AND SAFETY MARKINGS

Firing instructions and safety labels are described as follows:

- Operation Instructions
- Instructions (Fire Like This)
- Safety (Push and Hold)
- Trigger- Cocked
- Safety Pin

RIGHT Hand View

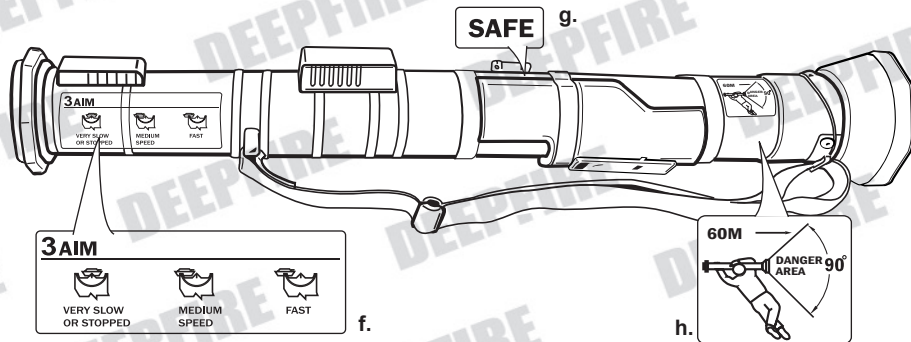


- INSTRUCTIONS**
- CHECK MUZZLE COVER FOR DAMAGE
 - IF DAMAGED-CHECK FOR OBJECTS INSIDE TUBE
 - FOLD OUT SHOULDER STOP
 - RELEASE SIGHTS
- PULL SAFETY PIN
 - COCK FIRING MECHANISM
 - AIM-SET RANGE IF KNOWN OR IF ESTIMATED TO BE GREATER THAN 250 METERS
 - PUSH SAFETY AND HOLD DOWN
 - FIRE BY PUSHING TRIGGER

INSTRUCTION AND SAFETY MARKINGS

- Aiming Instructions (3 AIM)
- Safe
- Danger Area (60 M)

LEFT Hand View

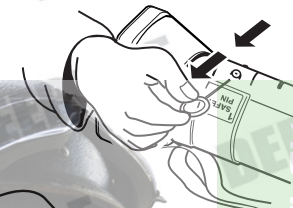
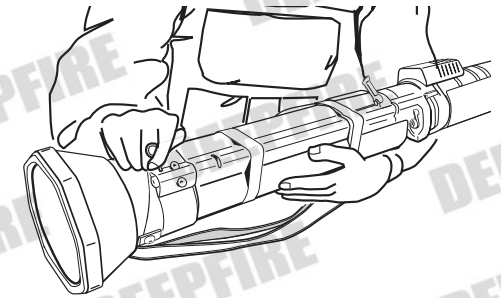


ARMING AND FIRING

- Remove weapon from the carrying position and cradle in the left arm.

WARNING

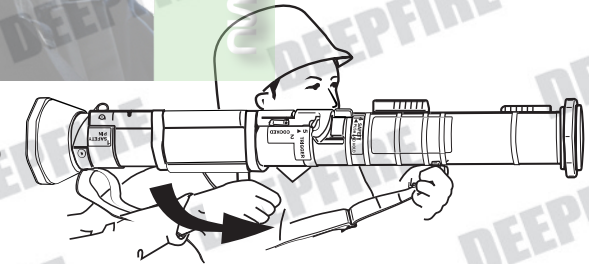
- KEEP WEAPON POINTED DOWN RANGE.
- CHECK BACKBLAST AREA TO BE SURE IT IS CLEAR OF OBSTACLES AND PERSONNEL.



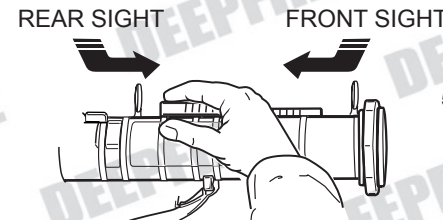
- Pull transport safety pin with right hand as shown.



- Place weapon on right shoulder.



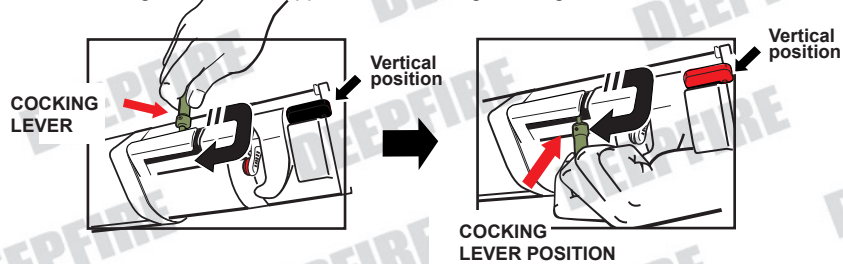
- Unsnap shoulderstop and unfold.



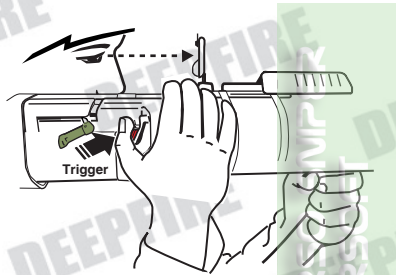
- Press down and move sight covers as shown to release sights.

6. Push cocking lever forward and down with inner part of right thumb.

Ensure cocking lever erect. Support with other fingers of right hand as shown.



7. Press shoulder stop against shoulder



8. Position the right eye 60 to 80mm (2.5 to 3 inches) from the rear sight

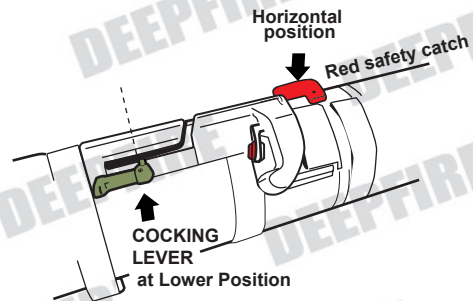


9. Fully depress and hold down red safety catch.

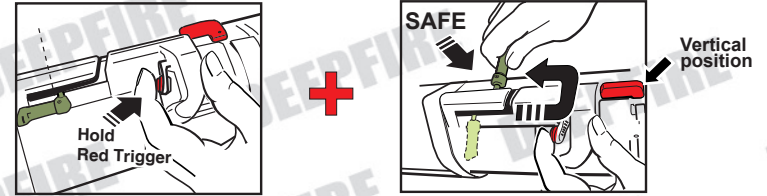
10. Operate red trigger button to fire weapon

TO REARM LAUNCHER

After firing, the red safety catch will hold in horizontal position, and the cocking lever will be at lower position.



11. Hold the red trigger and move back the cocking lever to "SAFE" position. The red safety catch will return to "Vertical" position.



12. Follow fire procedures (6-10) to arm fire

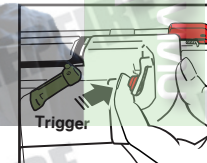
WARNING

- FAILURE TO FULLY DEPRESS AND HOLD RED SAFETY CATCH DOWN MAY CAUSE A MISFIRE.
- IF THIS OCCURS, DO NOT TOUCH RED SAFETY CATCH AGAIN. FOLLOW FIRE PROCEDURES (11-12) TO REARM LAUNCHER
- THE AT4 HAS A SLIGHT RECOIL WHEN FIRED. THE LAUNCHER MUST BE STRAINED PROPERLY ON THE SHOULDER OR THE TUBE COULD SWING UP AND OFF THE SHOULDER

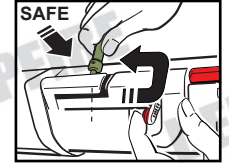
TO DISARM LAUNCHER

1. Release red safety catch in vertical position.
2. Hold the red trigger and move back the cocking lever to "SAFE" position.

Hold the red trigger



Move back the cocking lever to SAFE POSITION



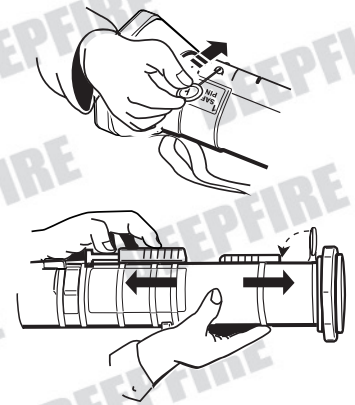
3. Remove from shoulder and return to cradle position.

4. Reinsert transport safety pin.

5. Return rear sight to battle sight setting (200 meters) and fold the sights in their covers as shown.

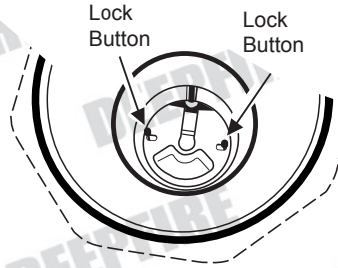
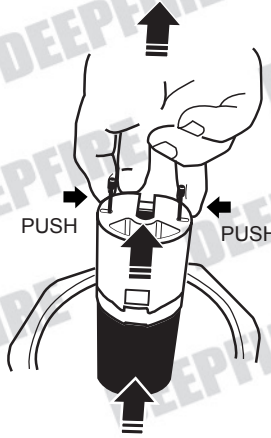
6. Fold shoulder stop and snap.

7. Assume desired carrying position.

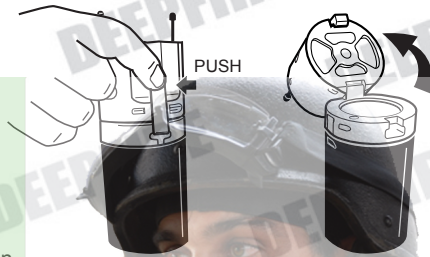


INTERNAL ASSEMBLY

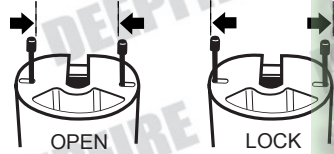
1. Use thumb, index and middle finger to push the lock button on both sides and pull the tube upward.



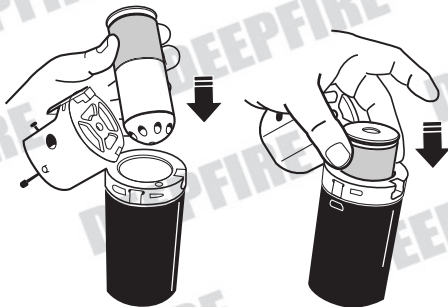
2. Press and hold the handle lock to open the internal assembly.



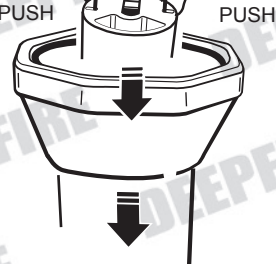
3. Push the lock buttons on both sides to open and return to lock.



4. Slide down airsoft grenade shell in the tube and flip the lock down.



5. Carefully hold the lock button on both sides and slide the tube back into the AT4 body and lock.

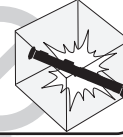


P5



WARNING

Never use the product in a closed environment.



Never throw the product to any living objects.



Never use the product for practical joke else you could be seriously punished.



Never use the product without wearing eye and ear protection facilities.



Never throw the product into fire source.



Never try to modify the product; it is already tuned to optimal performance.



Specification

Overall length:	1020mm
Weight:	6.7kg
Feed system:	DeepFire unique launch system
Bore diameter:	84mm
Cartridge:	bb shower / grenade launcher
Outer tube:	reinforced smoothbore fiberglass
Sight:	range indicator iron sights



DEEPIRE

DeepFire

Fung Li Creative International Ltd.

www.deepfire.com.hk

P6