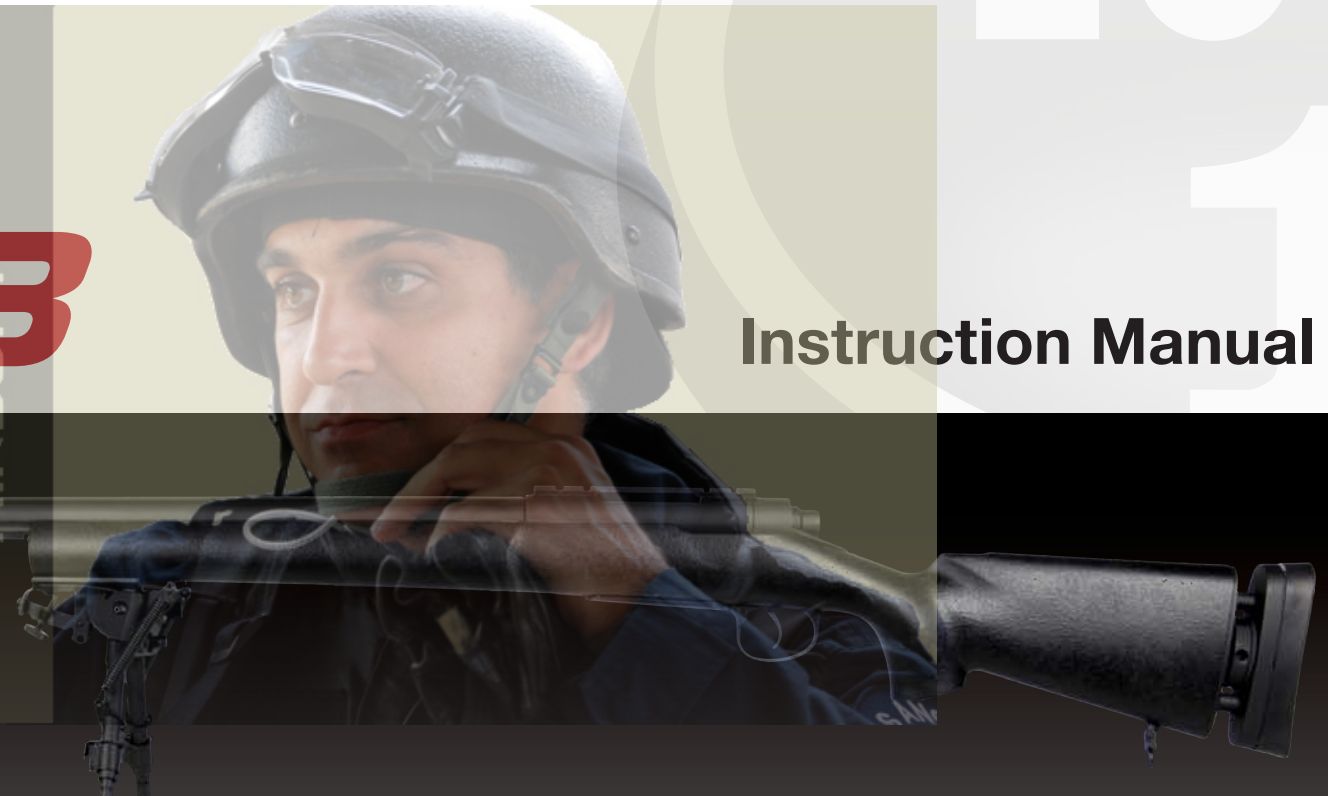




M28

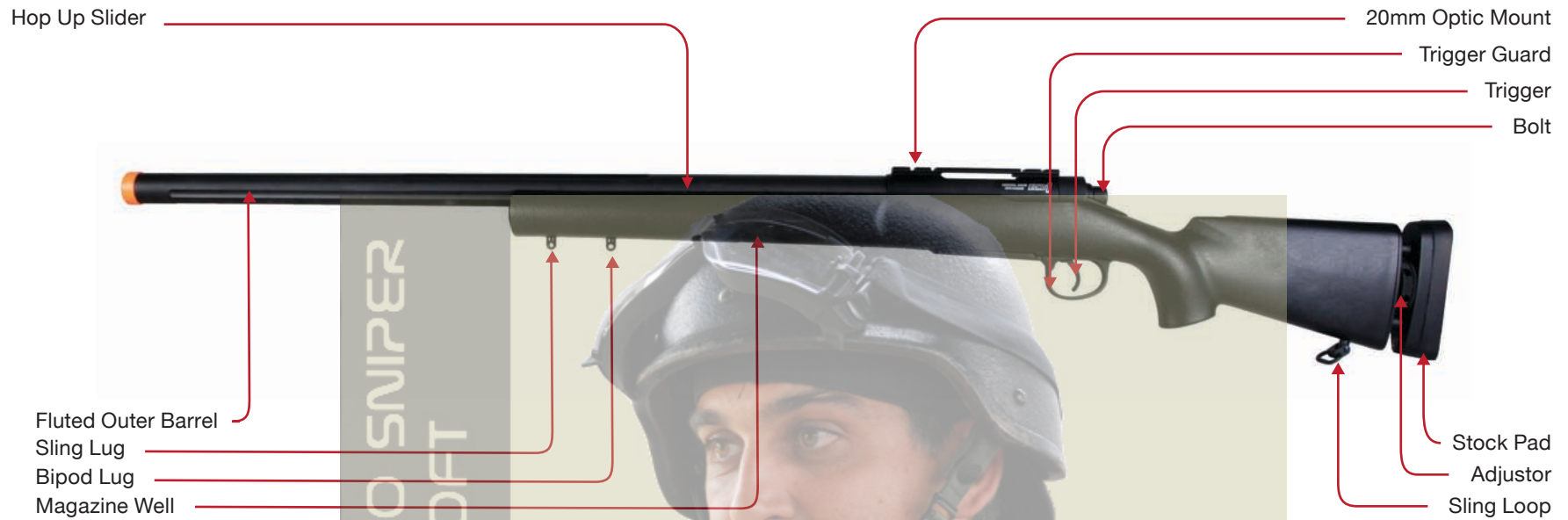
UNIVERSO SNIPER
AIRSOFT



Instruction Manual

BEFORE USING THIS PRODUCT, CAREFULLY READ THROUGH MANUAL AND RETAIN IT FOR FUTURE REFERENCE. ECHO1USA AUTOMATIC ELECTRIC GUNS ARE INTENDED FOR AGES 18 AND ABOVE. THIS PRODUCT MAY CAUSE SERIOUS INJURY IS MISUSED. FULL FACE PROTECTION IS REQUIRED.

Specs & Parts of the Gun



UNIVERSO SNIPER
AIRSOFT

Specifications

Weight	8 lbs
Barrel Length	517 mm
Overall Length	1025 mm
Barrel Caliber	6.06 mm
Ammo Capacity	18 rounds
BB Size	6 mm
Feet Per Second	500+ fps
Battery Type	N/A (Bolt Action)

Before using this product, carefully read though manual and retain it for future reference. Echo1usa spring guns are intended for ages 18 and above. This product may cause serious injury if misused. Full face protection is required.

Specs & Parts of the Gun Continued



Specifications

Weight	8 lbs
Barrel Length	517 mm
Overall Length	1025 mm
Barrel Caliber	6.06 mm
Ammo Capacity	18 rounds
BB Size	6 mm
Feet Per Second	500+ fps
Battery Type	N/A (Bolt Action)

Before using this product, carefully read though manual and retain it for future reference. Echo1usa spring guns are intended for ages 18 and above. This product may cause serious injury is misused. Full face protection is required.

Fire Control

How to use the Magazine

Avoid getting dirt and debris into the magazine this can cause it to malfunction. Only use Echo1USA BBs into your Echo1USA Airsoft Rifle. The use of .12g or 'low grade' BBs will damage your Airsoft Rifle and VOID the warranty.

- 1) Open the BB speed loader. Press the speed loader into the magazine.
- 2) Press the plunger down to load 18 BBs into the magazine.



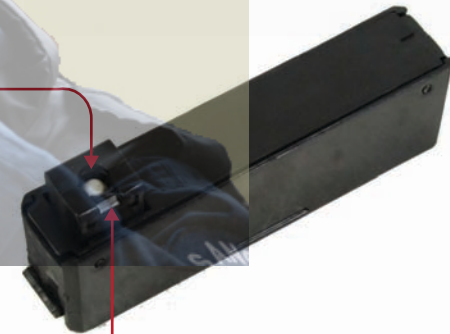
SAFETY ON
Trigger is secure and cannot fire



SAFETY OFF
Gun will fire when the trigger is pulled



BB Entrance



BB Stop Lever

The magazine will only hold 18 BBs. Loading more will damage the internals and cause a jam. Use some silicone oil to ensure smoother feeding.

Assembling the M28

To assemble the M28 you will have to open the box and pay special attention to the part provided. We also have a video on our website on the M28 product page for the build process.

Step 1. Locate the 3 screws and allen tool to assemble.



Step 2. The sling screw has a small hole in the cap. The middle screw is the shorter all screw and the longer screw is for the back end of the rifle.

Operational Tip:

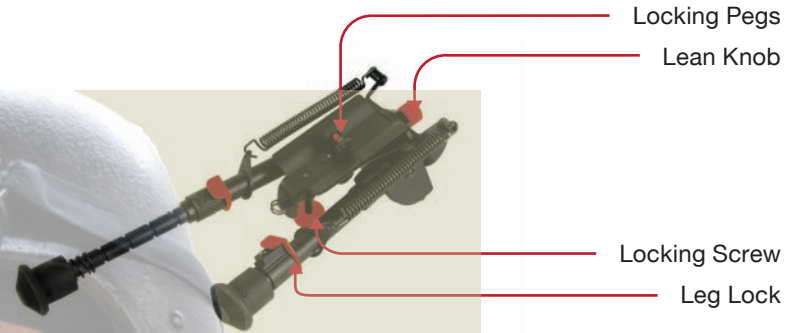
Make sure you evenly tighten the screws until hand tight. Over tightening or uneven tightening may cause damage. Make sure there is no packing material or loose parts in between the sections as you tighten the screws.



This is the fake mag release and compartment. It has no function. The highlighted red button is the release.

Attaching the Bipod

The bipod may look complex but it is not. The highlighted red parts are the key parts.



Step 1: Pull the locking pegs up and press onto the bipod lug. Make sure the locking screw is loosened to allow movement.

Step 2: Tighten the locking screw to secure the bipod to the frame of M28.

Operational Tip: To make the M28 not rock back and forth make sure you tighten the lean knob.

Shooting The M28

The M28 is a bolt action rifle meaning that you will have to operate the bolt to prime the rifle and load a BB for each shot.



Lift up on the bolt handle from the end of the handle. Once the handle is up it is clear of the stock and able to be pulled backwards.



Hold the bolt handle continue to pull back until it locks in place. Do not lower the bolt handle. Push the bolt handle forward and lower to its original position and it is ready to fire.

M28 Maintenance

The M28 has many moving parts and to keep the rifle working in proper order it is recommended to check and secure the screws.

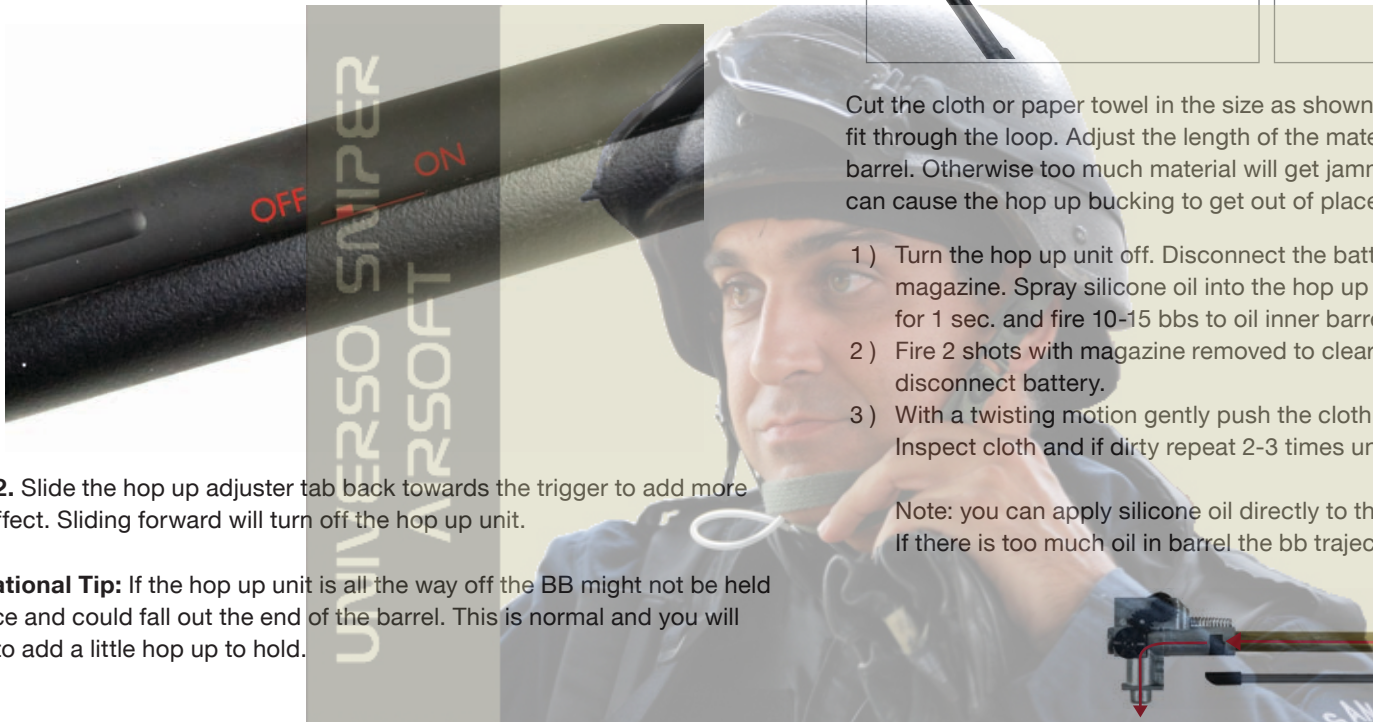


The highlighted locations are the check points on the M28. You can use a thread locking glue or Loctite to keep the screws in place over time. You only need to hand tighten the screws to secure them. Over tightening will cause damage.

Hop Up Unit Adjustment

The Hop Up Unit adds a back spin to the BB to allow a longer flight path. Before use please do so in a safe location and make sure nobody is behind the target. When using different weight BBs you will have to make adjustments. When not in use please turn the Hop Up Unit off.

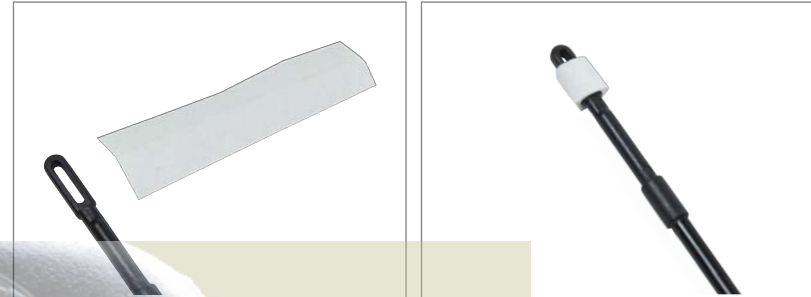
Step 1. Locate the Hop Up unit slider tab in the middle of the M28 and on the left side of the rifle.



Step 2. Slide the hop up adjuster tab back towards the trigger to add more hop effect. Sliding forward will turn off the hop up unit.

Operational Tip: If the hop up unit is all the way off the BB might not be held in place and could fall out the end of the barrel. This is normal and you will need to add a little hop up to hold.

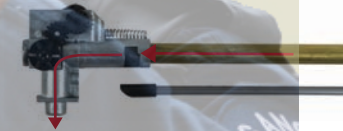
Hop Up Unit Cleaning



Cut the cloth or paper towel in the size as shown above. Fold the material to fit through the loop. Adjust the length of the material to smoothly enter the barrel. Otherwise too much material will get jammed in the inner barrel and can cause the hop up bucking to get out of place.

- 1) Turn the hop up unit off. Disconnect the battery, and remove the magazine. Spray silicone oil into the hop up chamber from the magwell for 1 sec. and fire 10-15 bbs to oil inner barrel and hop up parts.
- 2) Fire 2 shots with magazine removed to clear gun of bbs and disconnect battery.
- 3) With a twisting motion gently push the cloth and rod down the barrel. Inspect cloth and if dirty repeat 2-3 times until clean

Note: you can apply silicone oil directly to the cloth as well. If there is too much oil in barrel the bb trajectory will be unstable



Turn the hop up unit off. Disconnect the battery, and remove the magazine
Use the angled end of the cleaning rod to push the BB backwards and out through the hop up unit.
Make sure to have the angled end facing down and silicone oil will help loosen the BB.

NOTE: If you continue to fire the gun with a jam you will cause more damage.

Trouble Shooting

Notes

Gun is making a quiet clicking noise when trigger is pulled.

Use a fully charged battery or 12v to unlock the gears.

The trigger is stuck and will not pull back in SEMI mode.

Switch the selector to AUTO mode, fire 2 - 3 times, and switch to SEMI.

No power or noise coming from the gun.

Fuse may be blown. Replace with a 20 amp or 25 amp fuse found at most auto parts stores. Bypass by sticking the connectors together.

Grindy / scratchy noise when shooting.

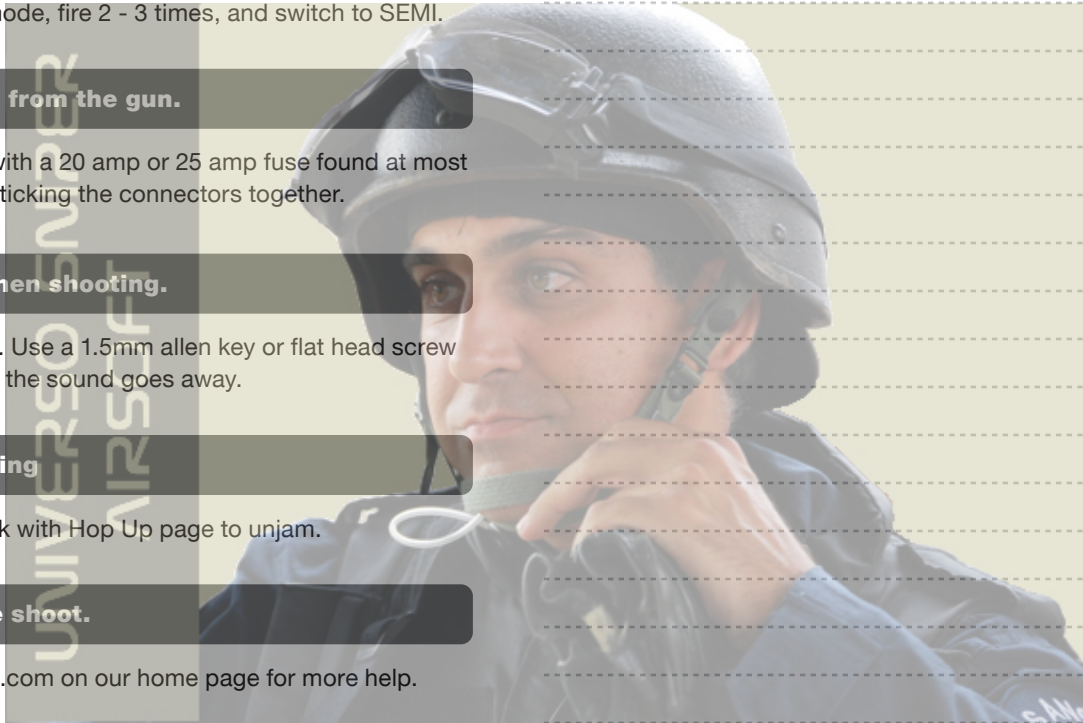
Motor height is too high or low. Use a 1.5mm allen key or flat head screw driver to tighten or loosen until the sound goes away.

BBs jamming or not shooting

Barrel is jammed. Please check with Hop Up page to unjam.

Now working after trouble shoot.

Please contact info@echo1usa.com on our home page for more help.



Dotted lines for note-taking.