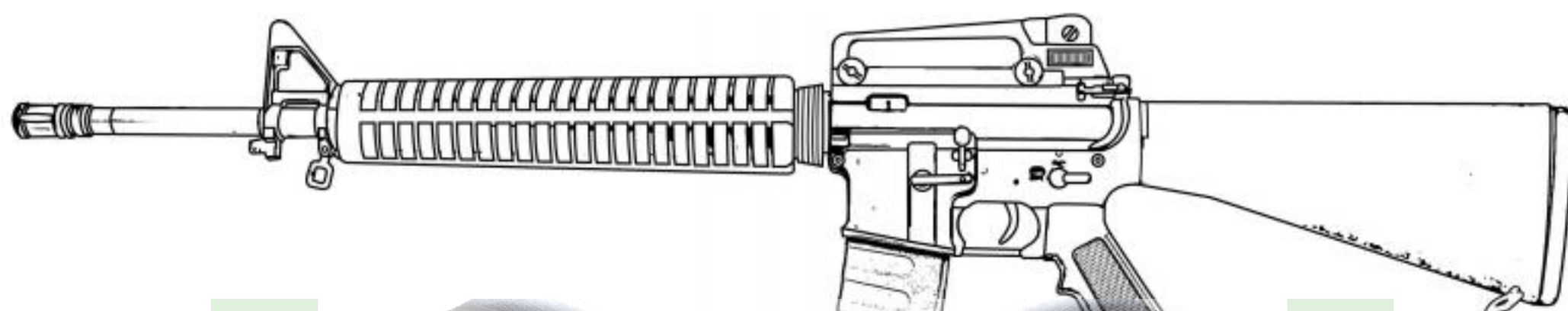


KWA®

OPERATOR'S MANUAL



UNIVERSO SNIPER
AIRSOFT



VISZOLI
UNIVERSO SNIPER

KM16BR

TABLE OF CONTENTS

| | |
|---|-------|
| Use of this manual..... | 2 |
| Safety Guidelines | 2-3 |
| Specifications | 4 |
| Package Contents | 4 |
| Break-in Period..... | 4 |
| Loading Magazine | 5-6 |
| Fire Selector Switch | 7 |
| Battery Installation..... | 8 |
| Fuse..... | 8 |
| Hop-Up System..... | 9 |
| Front and Rear Sight Adjustment | 10 |
| Disassembly and Assembly Procedures | 11 |
| Cleaning and Lubrication..... | 12 |
| Troubleshooting | 13 |
| Operating Under Unusual Conditions..... | 14 |
| Diagrams and Parts Lists | 15-19 |



USE OF THIS MANUAL

Before operating the Airsoft gun, read this manual in its entirety. Important safety topics and tips are discussed throughout all of the chapters. It's important that the operator know the principles of gun handling safety and operation prior to firing the Airsoft gun.

SAFETY GUIDELINES



WARNING! Failure to follow safety guidelines may result in serious injury.

Safety Distance

The effective shooting range is approximately 175 feet. BBs fired from this Airsoft gun may travel further than intended. Make certain that you have an adequate backstop.

Eye Protection

Eye protection should be worn at all times when both shooting and maintaining your Airsoft gun. Protect your eyes from BBs under spring pressure while performing maintenance on your Airsoft gun.

Assume Every Gun is Always Loaded

Until you are certain the chamber is empty, treat every gun as if it were loaded. Do not assume the chamber is empty based on your memory or someone else's words. Always remove the magazine and visually check to confirm the chamber is empty.

Beware of Barrel Obstructions

Ensure the Airsoft gun barrel is free of obstructions before you fire the gun. Even the smallest obstruction such as dirt, dust or a stuck cleaning patch can cause a jam, misfire or malfunction.

Muzzle Control

Always keep the muzzle of the gun pointed in a safe direction. Never point the muzzle at a person or object that you do not intend to shoot.

Keep Your Safety On

Keep the gun's safety on until your sights are aligned on your target and you are ready to fire.

Keep Your Finger Off The Trigger

Keep your finger off the trigger and out of the trigger guard until your sights are aligned on your target and you are ready to fire.



WARNING! Airsoft BBs can be a choking hazard. Keep them away from children.

SAFETY GUIDELINES

Identify Your Target and Backstop

Before you pull the trigger, make certain of your target and what is beyond it. The Airsoft gun should never be fired at surfaces such as rocks, glass, water, or other hard surfaces where BBs are likely to ricochet in unpredictable directions.



WARNING! Adult supervision is required for any person under the age of 18.

Failure To Fire

If the Airsoft gun fails to fire, misfires, or malfunctions, do not look into the gun barrel. BBs can become lodged into the chamber, and serious eye injury may occur.

Maintain Your Gun Properly

Performing proper maintenance, as outlined in this manual, ensures that your Airsoft gun will be safe to shoot and will perform to its designed specifications for many years. Alterations, modifications or adjustments may damage your Airsoft gun, make it unsafe to shoot, and will void all warranty claims.

Store Your Gun Safely

Always store the Airsoft gun in a safe place, and out of the reach of children. Always transport the Airsoft gun in a carrying case. Never display the Airsoft gun in a public place. Keep the safety engaged, and remove the magazine before storing the Airsoft gun.

NOTE: IT IS YOUR RESPONSIBILITY TO TAKE EVERY REASONABLE PRECAUTION TO ENSURE THE SAFE STORAGE AND TRANSPORTATION OF YOUR AIRSOFT GUN.

Orange Tip

The orange tip on Airsoft guns helps Law Enforcement distinguish between the replica guns from their real firearm counterparts. Altering the coloration or markings required by state or Federal law so as to make the product look more like a firearm is dangerous and may be a crime. Operator assumes all risks and responsibility when doing so.

Hazards of Being Mistaken for a Real Firearm

Airsoft guns have been mistaken by Police and Law Enforcement as real firearms. A confrontation with law enforcement while carrying an Airsoft gun can result in serious injury or even death. It is strongly advised to operate the Airsoft gun at a safe and legal location. In the event that you are approached by Law Enforcement personnel, you must comply with their instructions immediately to avoid an incident.

Alcohol, Medications, and Drugs

Do not handle or operate your Airsoft gun while under the influence of alcohol, medication or drugs.

Your Responsibility

Your Airsoft gun is well-engineered and manufactured to the highest standards. It was carefully inspected before it was packaged and shipped from our factory. Its safe use depends on you alone. You are the ultimate safety device. Like many other devices, your Airsoft gun is safe unless handled in an irresponsible or uneducated manner.

SPECIFICATIONS

- Overall Length = 100.33 cm [39.5"]
- Outer Barrel Length = 515 mm [20.27"]
- Inner Barrel Length = 509 mm
- Inner Barrel Diameter = 6.05 mm
- Weight = 3.21 kg [7.7 lbs]
- Barrel Thread = -14 mm
- Caliber = 6 mm
- Magazine Capacity = 120 rounds
- Rate of Fire = 20+ RPS
- Velocity = 118-125 MPS [390-410 FPS]
- Energy Output with 0.20g BB = 1.49 Joules
- Power Source = 9.6v NiMh, 7.4v or 11.1v 15c Li-po/Li-Fe

Special Features:

- KWA 2GX gearbox
- KWA 2G high performance bucking
- Removable carry handle
- Full metal flat top upper receiver
- Full metal alloy lower receiver
- Adjustable front and rear sights
- Fiber reinforced fixed stock with battery compartment
- Semi and full auto selective fire
- Adjustable hop-up

*Individual test results may vary depending on brand of BBs, ambient temperature, and chronograph used.

PACKAGE CONTENTS

- 1 KM16BR Airsoft gun
- 2 Allen Wrenches (For cap screw removal)
- 1 Safety Cap
- 1 Sight Adjustment Tool
- 1 Cleaning Rod
- 1 Owners Manual
- 1 K120 Magazine

BREAK-IN PERIOD

Airsoft guns, like many other products require a “break-in” period to ensure the optimal performance. This break-in period allows the spring, piston, gears and other moving parts to be seated and become more consistent in their movements. Every new KWA KM16 Airsoft gun spring is manufactured with more tension than is required, this break-in period will allow the spring to “settle” and operate at the specified FPS range.

The KWA KM16 Airsoft gun’s break-in period will require a minimum of 2000 rounds. During this break-in period, the Airsoft gun will require more cleaning because it will expel excessive grease from the gearbox. After the break-in period, the gun will operate within factory specification. The accuracy of the brass barrel will also improve as you continue to use the gun.

LOADING MAGAZINE

1. Release the magazine from the Airsoft gun by pressing the magazine release button.
2. Feed the BBs into the magazine through the magazine feed lip as shown.

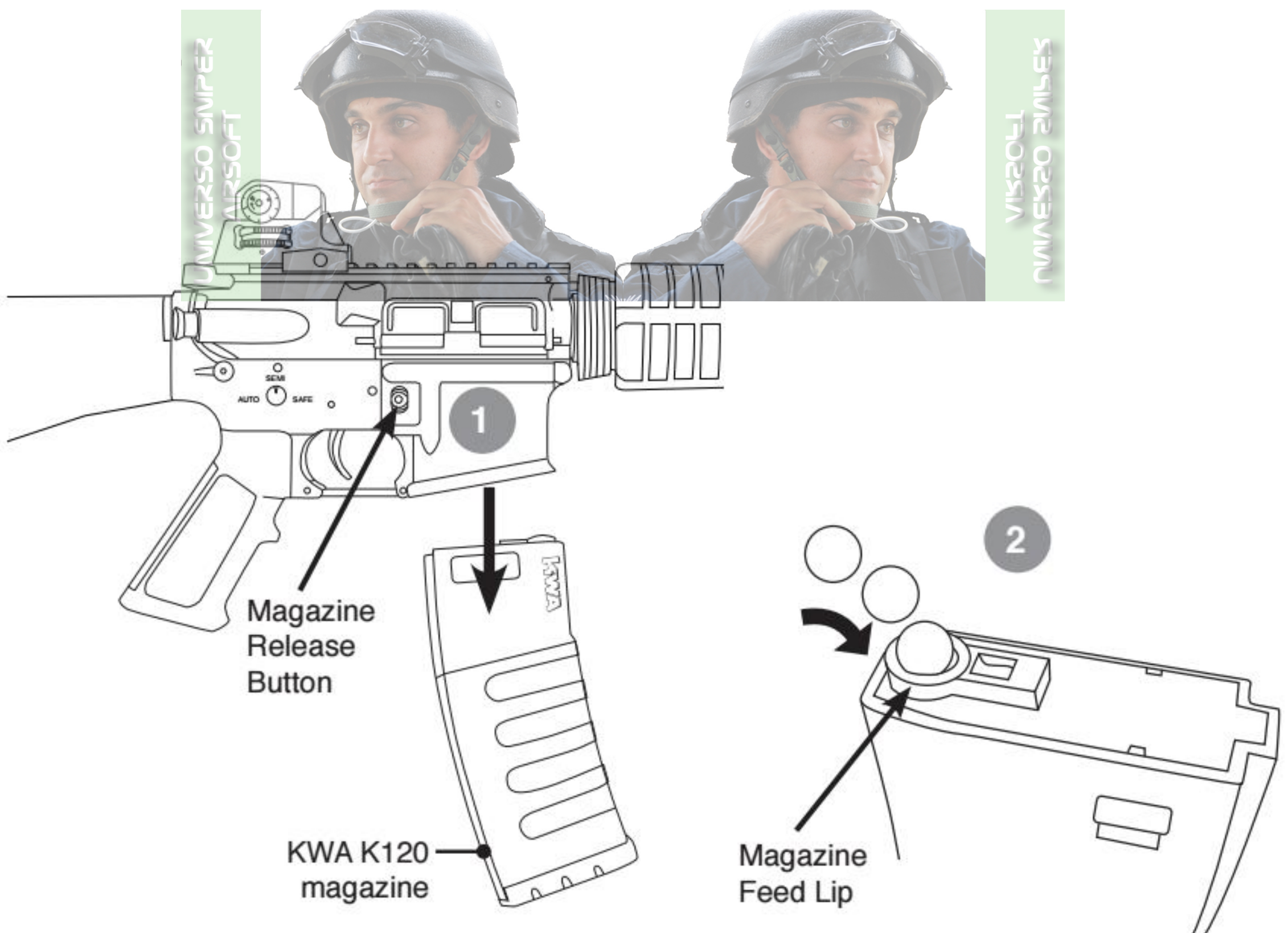
NOTE: The use of a BB loader, such as the KWA High Performance BB Loader, can help make the loading process easier and faster.

Loading safety tips:

- Switch the selector to safe
- Be sure the safety cap is on
- Keep your finger off the trigger at all times



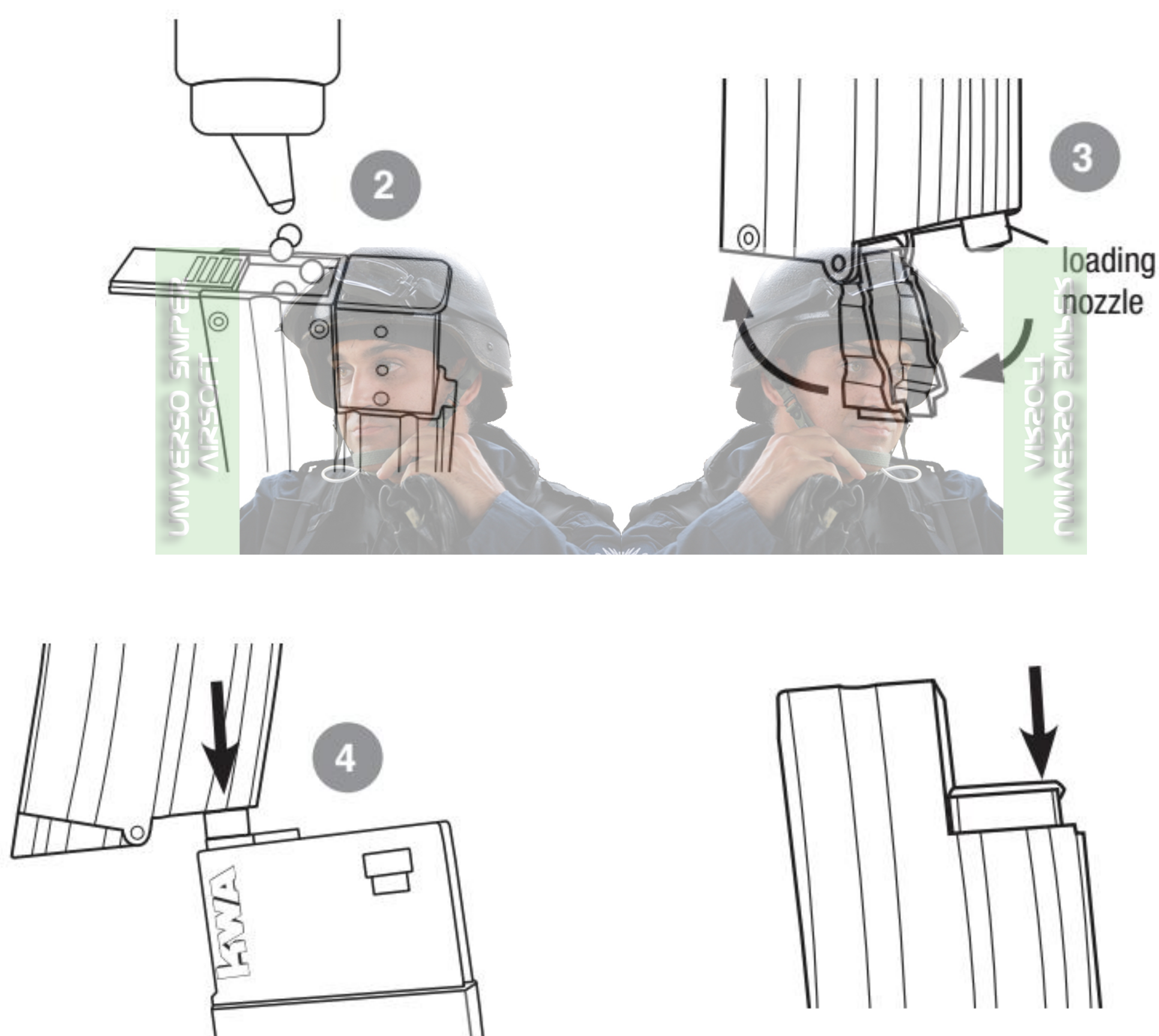
WARNING: Always use high quality 6mm BBs, weight 0.2g or higher. For best result use 0.25g KWA Perfect BBs. Never use recycled or low grade BBs to prevent damage to your gun.



WARNING: KWA K120 magazine holds 120 rounds of BBs. DO NOT load more than 120 rounds into the magazine. Overloading will cause jamming and feeding issue.

USING KWA HIGH PERFORMANCE BB LOADER (Purchase Separately)

1. Release the magazine from the Airsoft gun by pressing the magazine release button.
2. Slide open the trap door on top of the BB loader. Fill the BB loader with BBs. *Do Not Overfill.
3. Flip down the dust cover to reveal the loading nozzle.
4. Fit BB loader into the magazine feed lip.
5. Press on BB loader plunger to load BB into magazine.

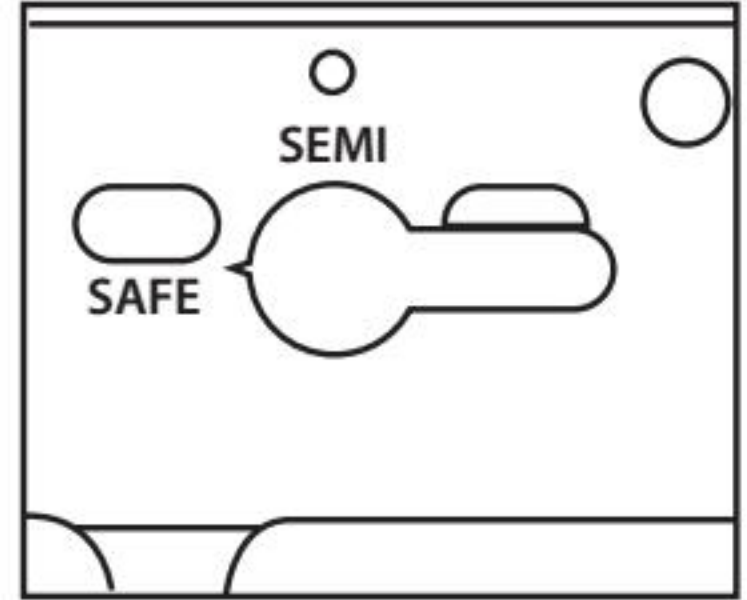


WARNING: Always use high quality 6mm BBs, weight 0.2g or higher. For best result use 0.25g KWA Perfect BBs. Never use recycled or low grade BBs to prevent damage to your gun.

FIRE SELECTOR SWITCH

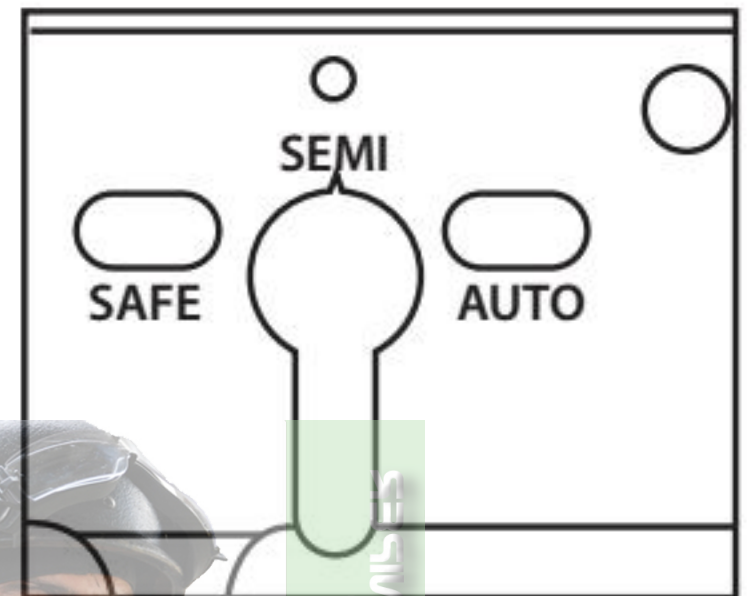
1. Safe

In Safe mode the gun will not fire. For safety reasons, you should keep the switch in Safe mode at all times when you are not ready to fire.



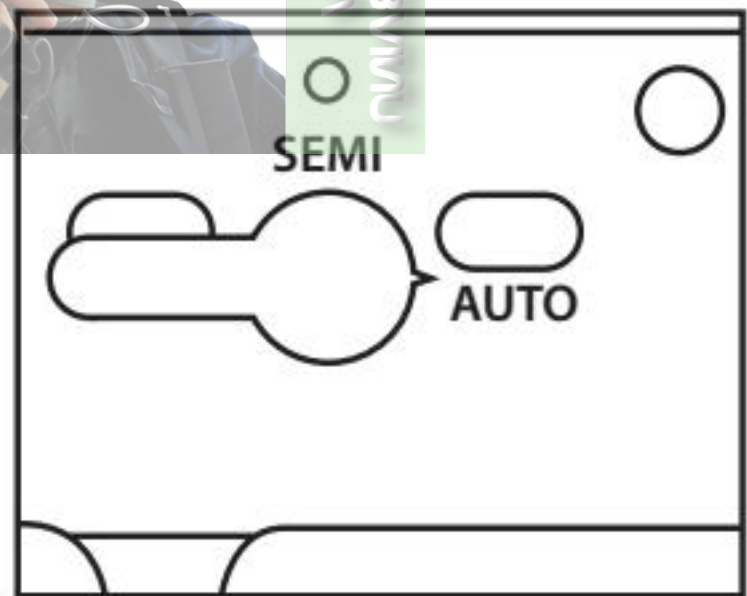
2. Semi-Auto

In Semi-Auto mode the gun will fire one shot for each time you pull the trigger.



3. Full Auto

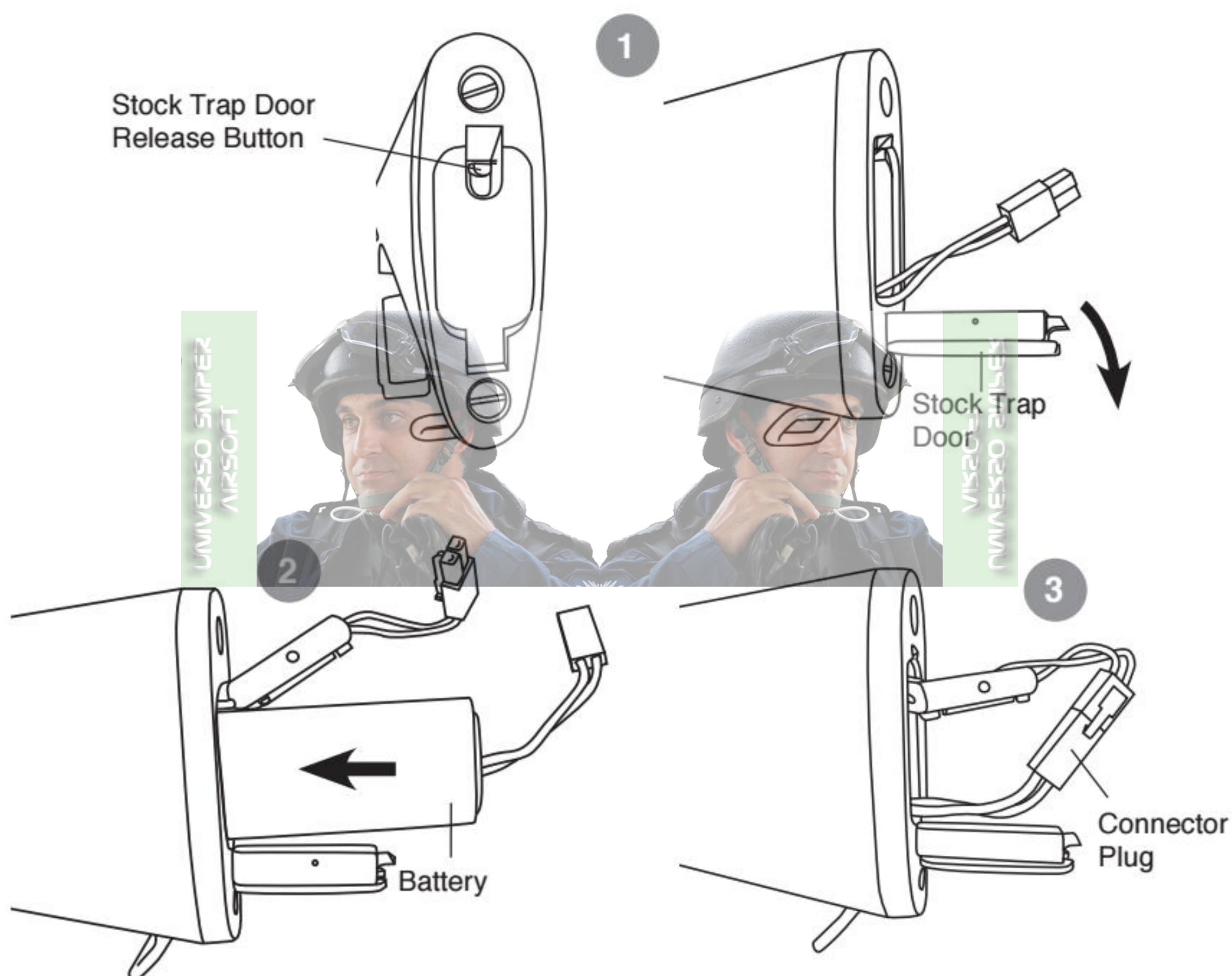
In Full Auto mode the gun will fire continuously as long as the trigger is depressed.



WARNING: Do not pull the trigger when switching the fire selector.

BATTERY INSTALLATION

1. Set the fire selector switch to safe mode. Push down on the stock trap door release button to open the stock. Pull out the connector wire from inside the stock.
2. Place the battery into the stock.
3. Push the connector plugs together firmly until they click into place.
4. Push the wires into the stock and close the stock trap door.



FUSE

To replace the fuse, remove the butt stock cover and replace the fuse with a 20A glass fuse.

HOP-UP SYSTEM

The Hop-Up device is one of KWA's standard features, giving Airsoft BBs greater stability, further travel and increased accuracy. Airsoft BBs are light-weight and can be affected by wind when fired. With the Hop-Up system, the trajectory of the Airsoft BBs can be adjusted according to the shooting environment or surroundings.

HOP-UP ADJUSTMENT

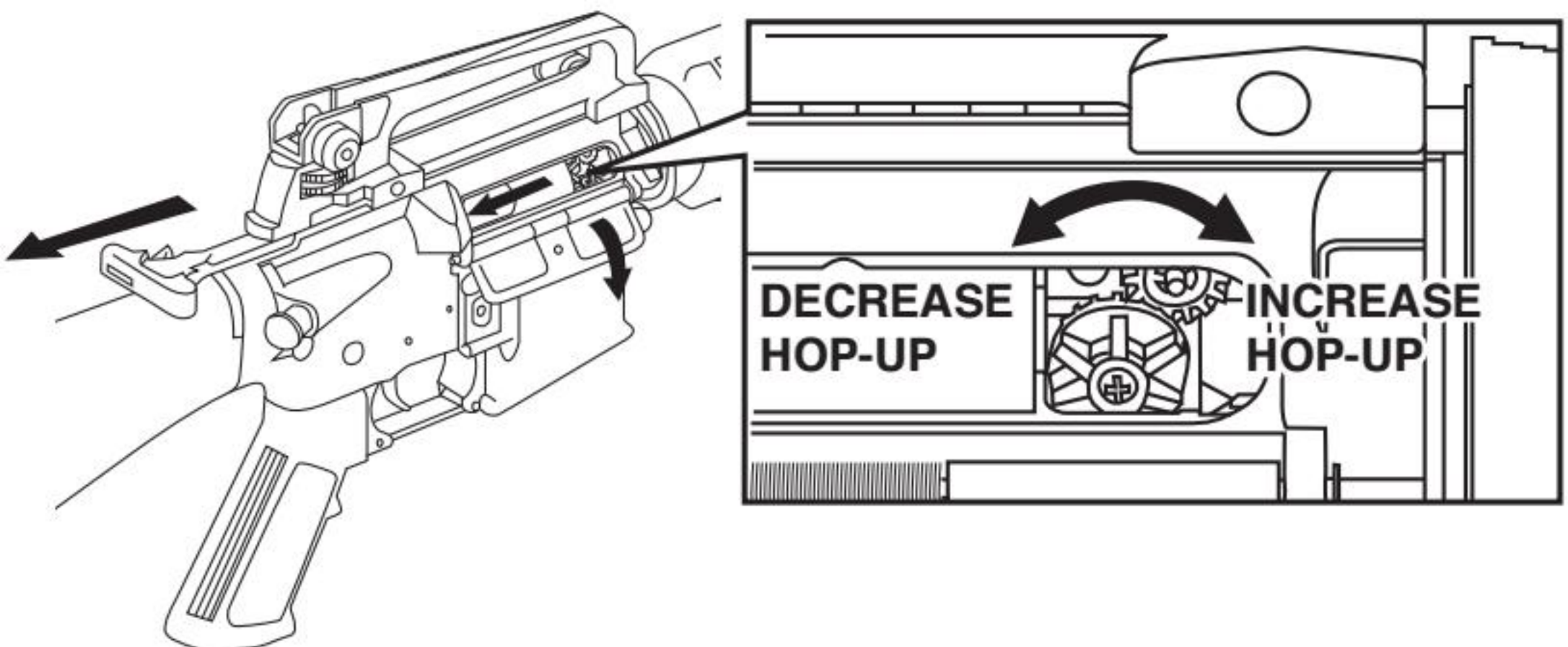
- Pull the charging handle to the rear, the ejection port will open and Hop-Up adjustment dial is revealed. Pull and hold charging handle to the rear when adjusting Hop-Up.
- Turn the Hop-Up adjustment dial forward to increase hop-up. Turn the Hop-Up adjustment dial backward to decrease hop-up.
- Excessively turning of Hop-Up adjustment dial forward can cause Airsoft BBs to jam. Continued firing with a jammed barrel will cause damage to the gearbox.
- When jamming occurs, immediately stop shooting and turn the Hop-Up adjustment dial backward to decrease hop. Remove jammed Airsoft BBs.

Before removing jammed Airsoft BBs, be sure to return the hop-up adjustment dial to normal position. After removal of Airsoft BBs, test fire 2 – 3 rounds to check for clearance. Resume adjustment. KWA Airsoft guns are made with precision barrel, use only new, quality Airsoft BBs. The use of recycled or low quality Airsoft BBs are the primary cause of jamming. In most cases, it can severely damage the gearbox and inner barrel.

Excessive Hop – Airsoft BB travels an upward trajectory path. Turn Hop-Up adjustment dial backward to decrease hop-up.

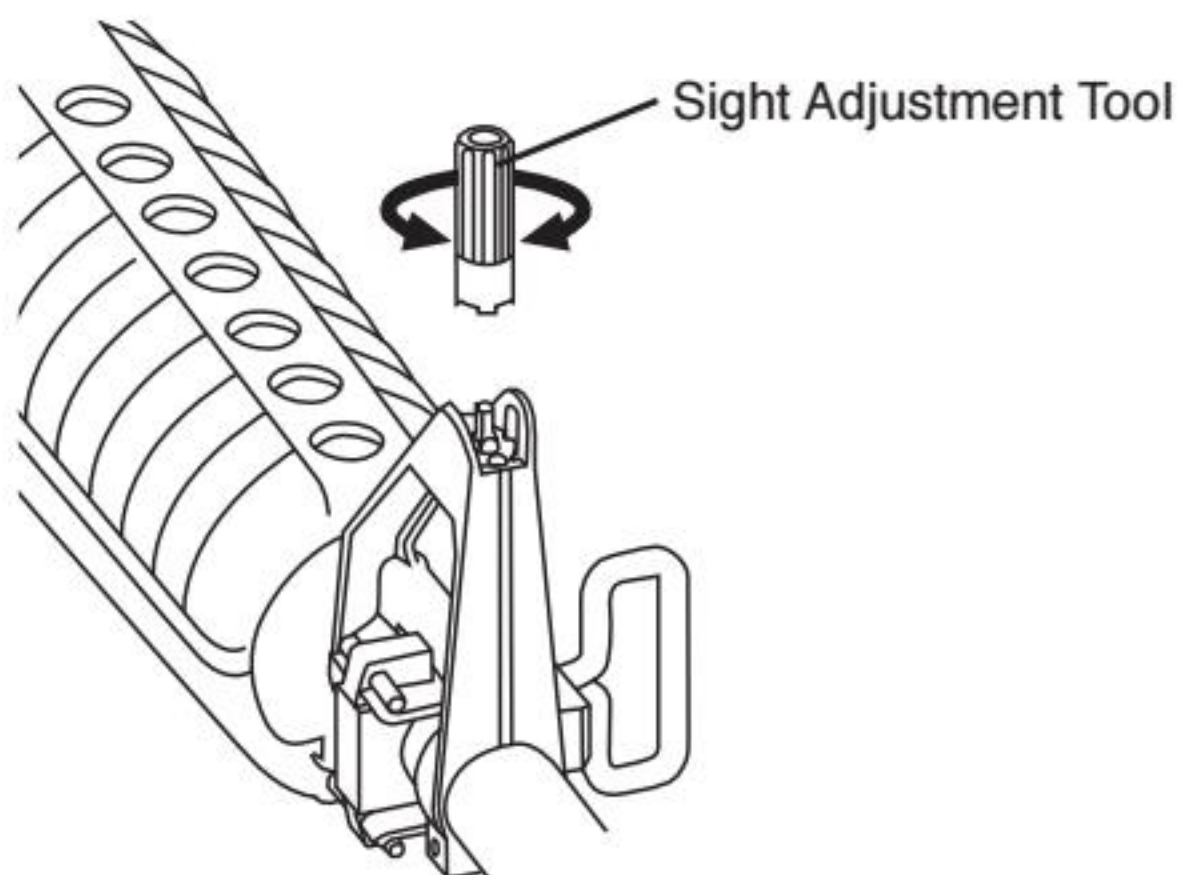
Perfect Hop – Airsoft BB travels long distance horizontally.

Inefficient Hop – Airsoft BB travels a downward trajectory path. Turn Hop-Up adjustment dial forward to increase hop.



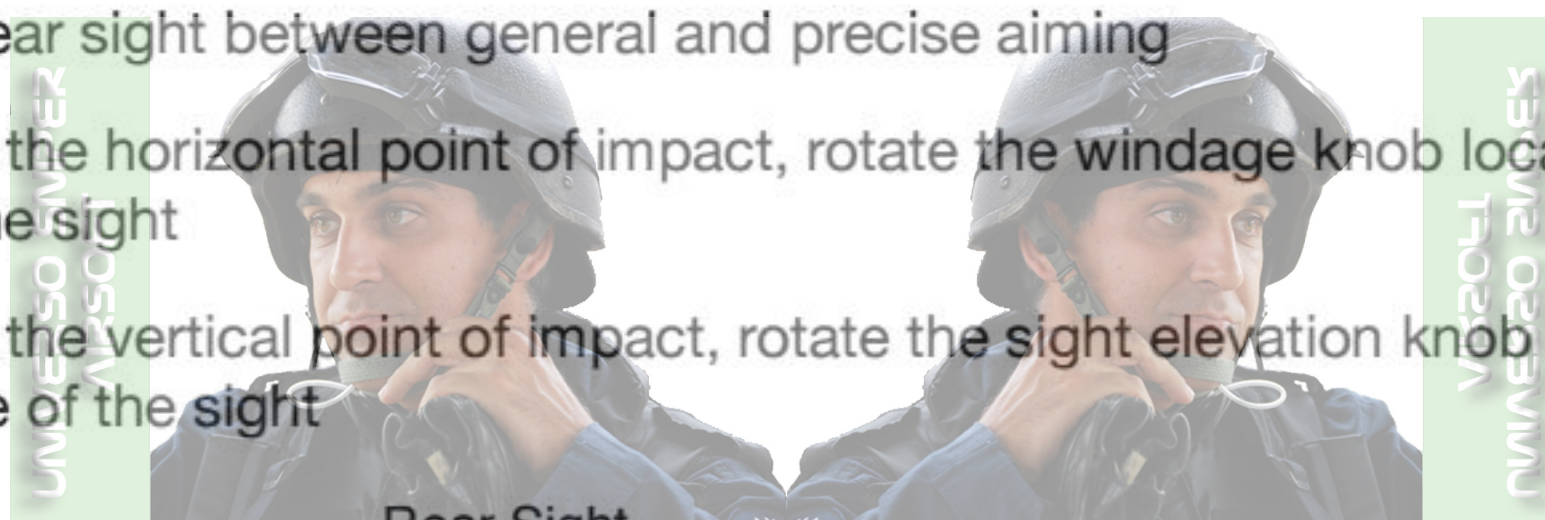
FRONT SIGHT ADJUSTMENT

- The front sight can be moved up and down when zeroing rear sight
- Turn counter clockwise to lower the point of Impact
- Stop turning when a click sound is heard

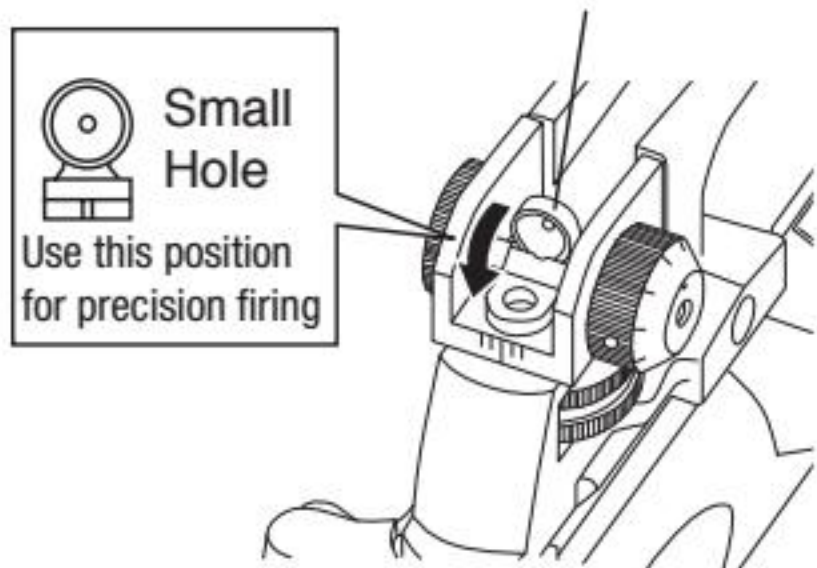


REAR SIGHT ADJUSTMENT

- Flip the rear sight between general and precise aiming
- To adjust the horizontal point of impact, rotate the windage knob located on the rear of the sight
- To adjust the vertical point of impact, rotate the sight elevation knob located on the right side of the sight

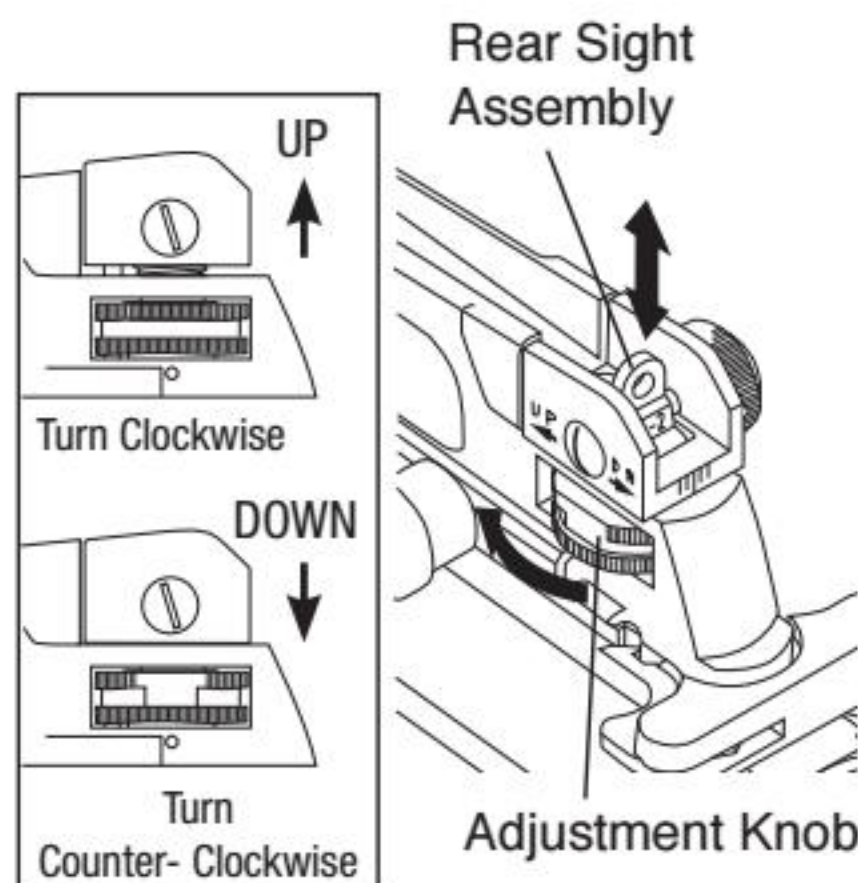


Rear Sight



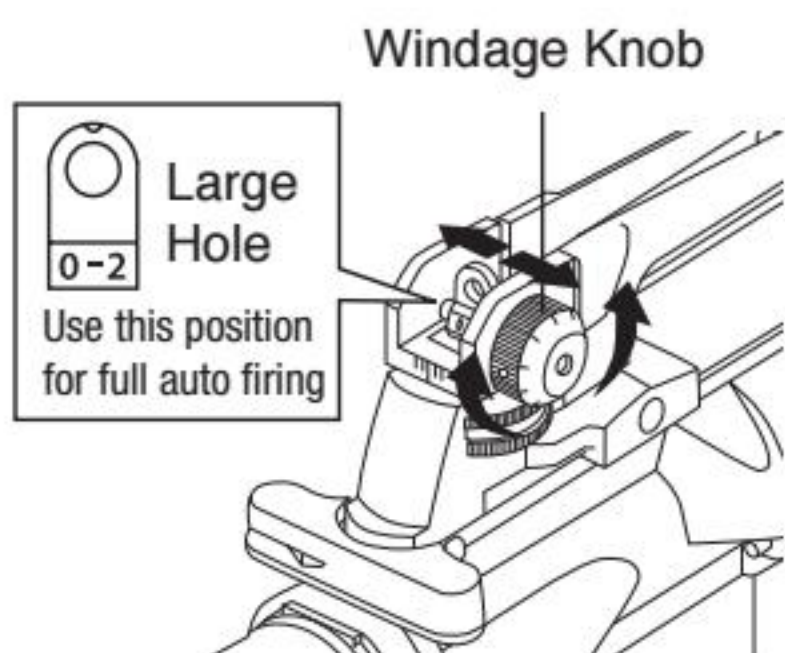
Small Hole
Use this position for precision firing

The sight assembly is marked in millimeter for precise adjustments



Rear Sight Assembly

Adjustment Knob



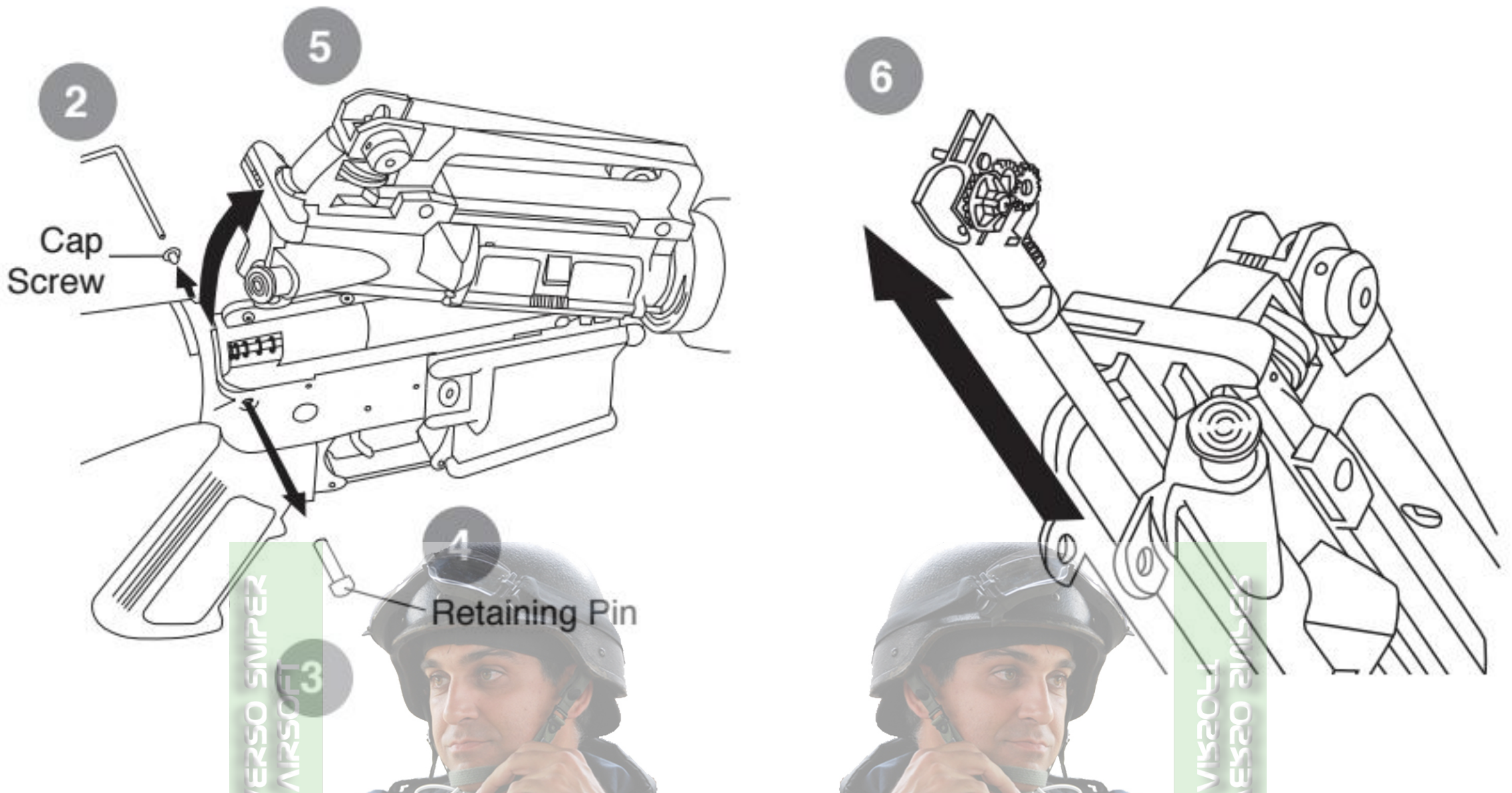
Large Hole
0-2
Use this position for full auto firing

Windage Knob

DISASSEMBLY

Note: Before opening the receiver, the piston must be in forward position.

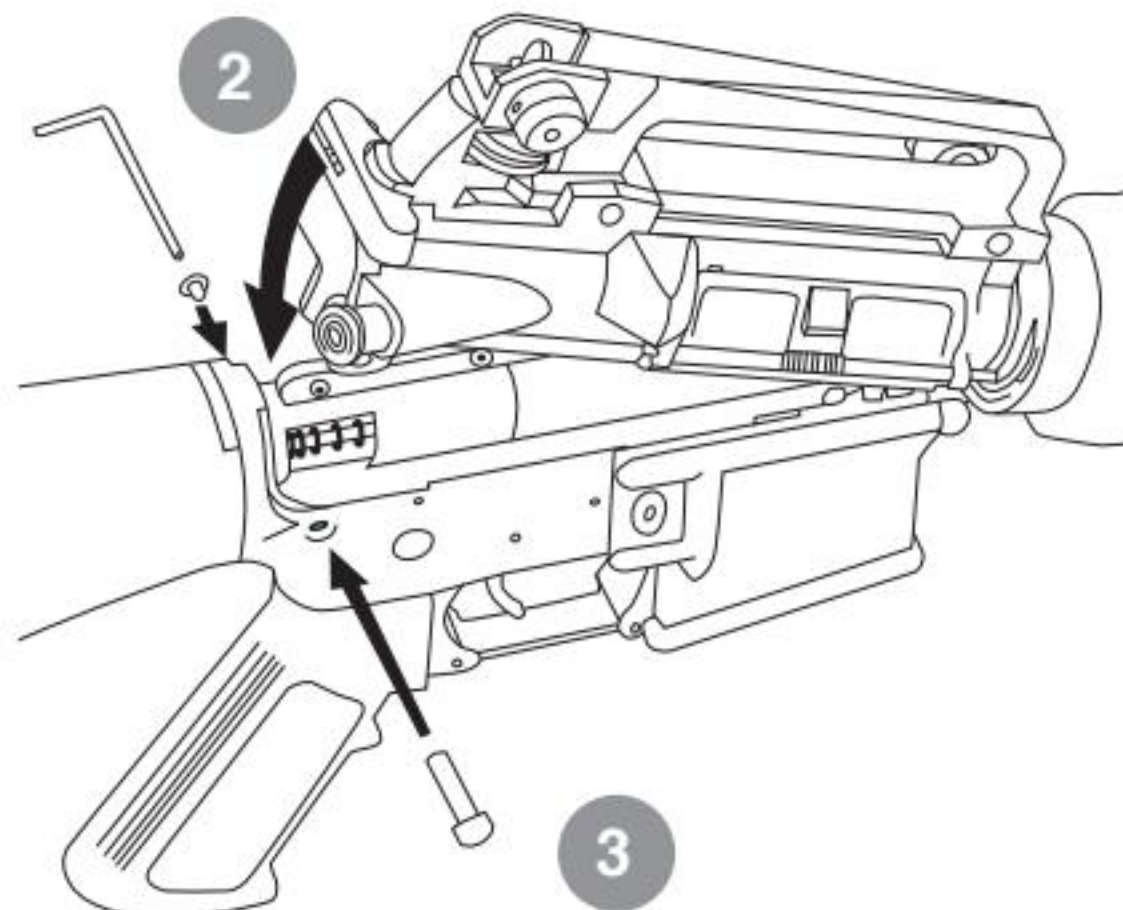
1. Fire in semi-automatic mode 2-3 times to clear the barrel and reset piston.
2. Remove the Rear Pin only from lower receiver with the provided Allen wrenches.
3. Use 1 wrench to hold cap screw, the other to turn set pin.
4. After the removal of cap screw, use allen wrench to push pin out.
5. Pull the Upper receiver up.
6. Slide out the inner barrel with Hop-Up assembly.



WARNING: Before removing any parts, be sure the fire selector is set to "SAFE". Always place the safety cap on the barrel tip when servicing your gun.

ASSEMBLY

1. Insert the inner barrel and Hop-Up assembly into the upper receiver.
2. Secure the Hop-Up assembly into the upper receiver. Push down the upper receiver to close.
3. Align the pin holes. Insert Pin and use the allen wrench to tighten the cap screw.



CLEANING

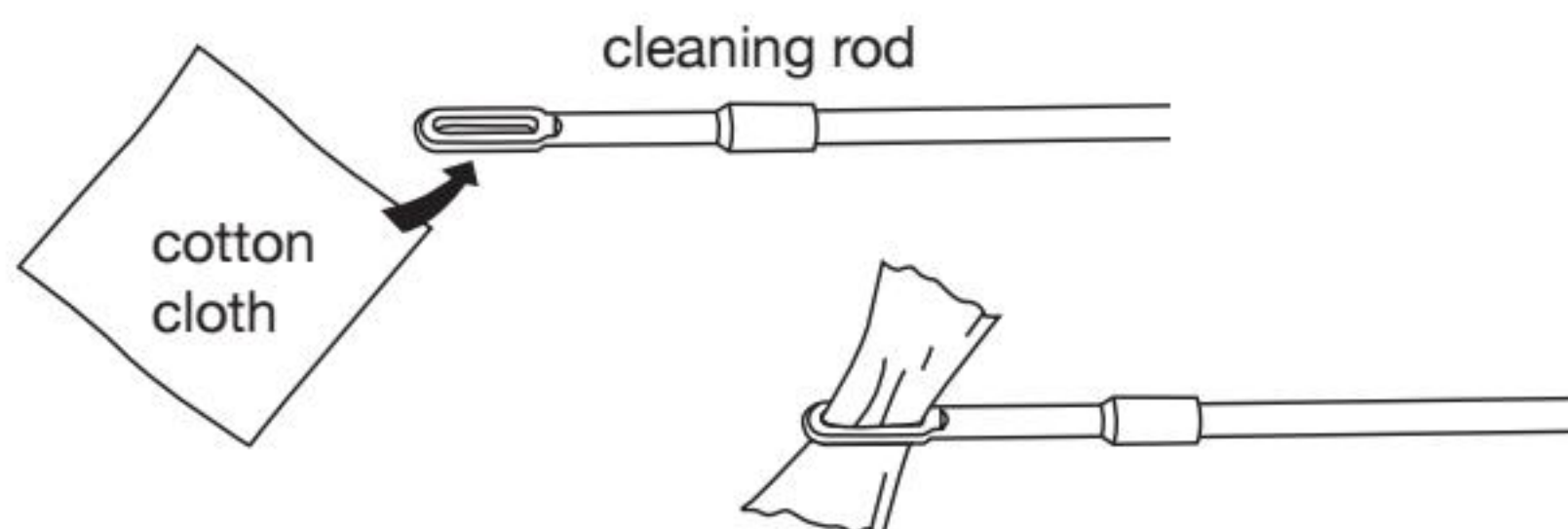


WARNING! Unload and clear the Airsoft gun before cleaning.

Cleaning Procedure

The Airsoft gun barrel should be cleaned after each shooting session. Regular cleaning prevents the effects of BB residue buildup that can hinder performance or jam the gun.

1. Ensure that the safety is engaged
2. Remove the magazine and clear the chamber of loaded BBs
3. Disable Hop-Up by dialing to the OFF position (see Hop-Up section)
4. Disassemble the receiver (see Disassembly section)
5. Steps to use cleaning rod:
 - a. Cut a piece of clean cotton cloth to 1 inch by 0.5 inch size. Insert one end of the cloth into the hole in the cleaning rod (adjust the length of cloth for smooth entry into the barrel)
 - b. Wind the cloth around the cleaning rod
 - c. Insert the cleaning rod into the inner barrel, and push the rod through.
 - d. Remove the cleaning rod and check the cotton cloth for dirt. Repeat steps a. through c. when necessary.



WARNING! DO NOT use spray silicone oil as a cleaning solution for the inner barrel.

BASIC TROUBLESHOOTING GUIDE FOR RIFLE

| SYMPTOMS | CAUSE | SOLUTIONS |
|--|---|---|
| Air Soft gun is not firing | Selector set to Safe Mode | Select Semi-Auto or Full-Auto Mode |
| | Dead battery | Replace or Charge battery |
| | Burned out fuse | Replace with a new fuse |
| | Motor damaged or bad connection | Return gun for professional care |
| | Pinched wiring | Return gun for professional care |
| Motor is running but not firing | Internal failure | Return gun for professional care |
| Motor or Battery is hot after short use | Pinched wiring | Return gun for professional care |
| | Motor damaged or bad connection | Return gun for professional care |
| Semi-Auto feature not functioning properly | Incorrect timing | Set selector to full-auto mode. Dry fire 10-20 rounds before returning it to semi-auto mode |
| Semi-Auto feature not functioning at all | Internal failure | Return gun for professional care |
| Firing cycle slows down | Weak battery | Recharge battery |
| High pitch or grinding noise | Gear may be damaged or Motor level not adjusted | Return gun for professional care |
| BB travels upward | Excessive hop | Turn hop adjustment dial backward |
| BB travels downward | Insufficient hop | Turn hop adjustment dial forward |
| BB double feeding or rolling out of the barrel | Excessive oil in chamber | Fire 200 rounds to eliminate excessive oil |
| | Hop-Up unit is contaminated | Clean Hop-Up unit with supplied cleaning rod |
| | Hop-Up unit may be damaged | Return gun for professional care |
| Hop-Up unit can't be adjusted | Damaged adjustment dial or internal parts | Return gun for professional care |
| Inner barrel is jammed | Use of recycled or low quality BBs | Use KWA Perfect BBs or other high quality BBs |
| | Inner barrel is contaminated | Clean inner barrel with supplied cleaning rod |
| | Inner barrel is damaged | Return gun for professional care |
| Hi-cap magazine not feeding | Magazine has not been wound. | Wind wheel underneath magazine |
| | BBs are lodged inside the magazine | Shake or tap magazine to unclog the BBs |
| | Internal failure | Return gun for professional care |

OPERATING UNDER UNUSUAL CONDITIONS

Unusual conditions are defined as any condition requiring special maintenance. Perform maintenance outlined for the climate similar to your operational area

Extreme Cold:

Operating an Airsoft gas gun in extremely cold temperatures is not recommended. Cold temperature will cause the Hop-Up Bucking to harden, reducing its effectiveness or cause the gearbox shell to fracture during operation, rendering the gun inoperable.

Extreme Heat:

Do not keep Airsoft gun and batteries under direct sunlight for long periods of time.

Dust or Sand:

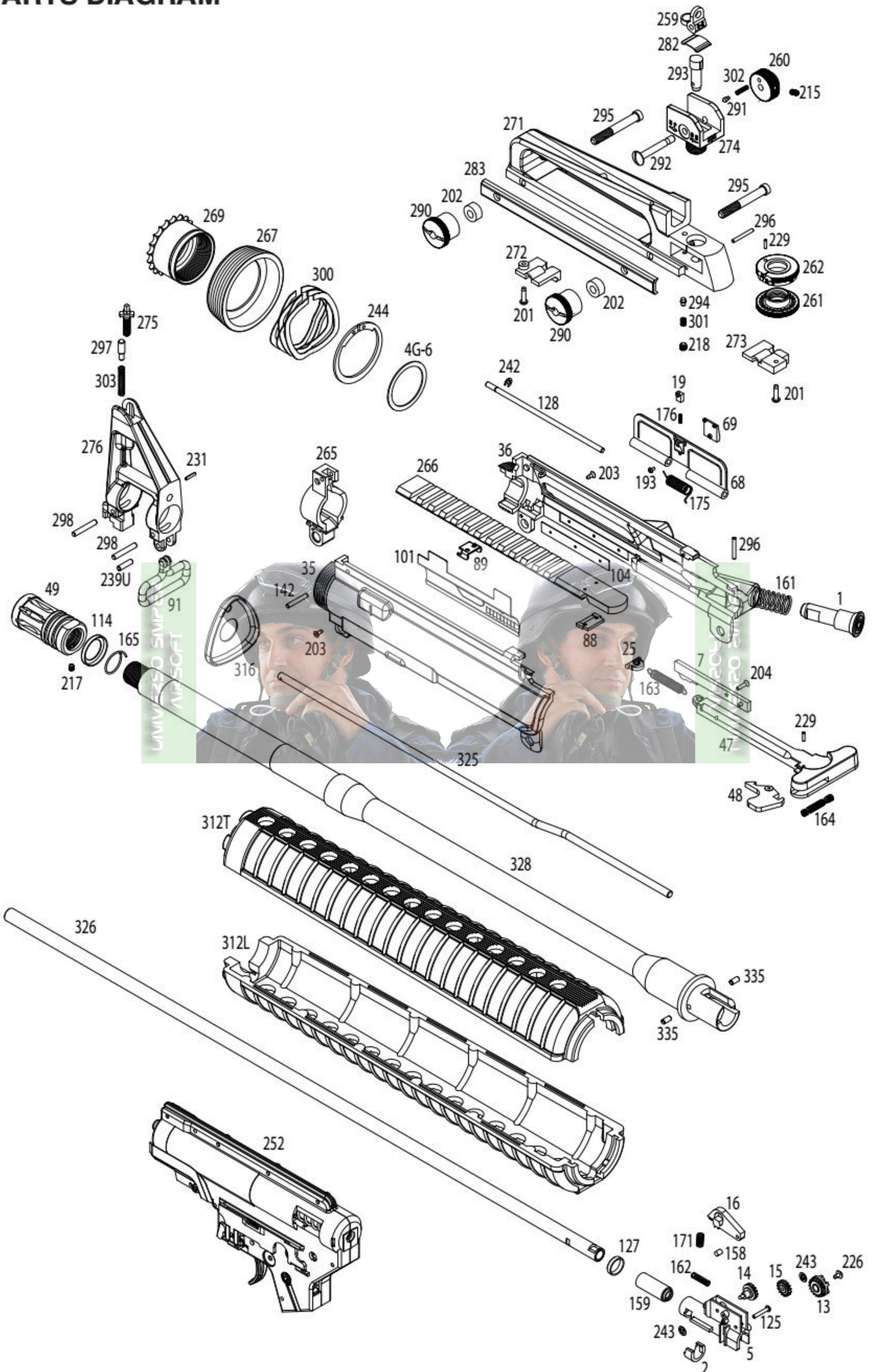
Dust or sand can get into a gun and cause malfunctions and/or excessive wear. Keep the gun covered whenever possible. Use lubricant sparingly, as lube naturally attracts dirt and other particles. After use in a dusty area, always field strip the gun (refer to Disassembly Section) and clean any areas you can reach with a soft, lint-free cloth.

Heavy Rain:

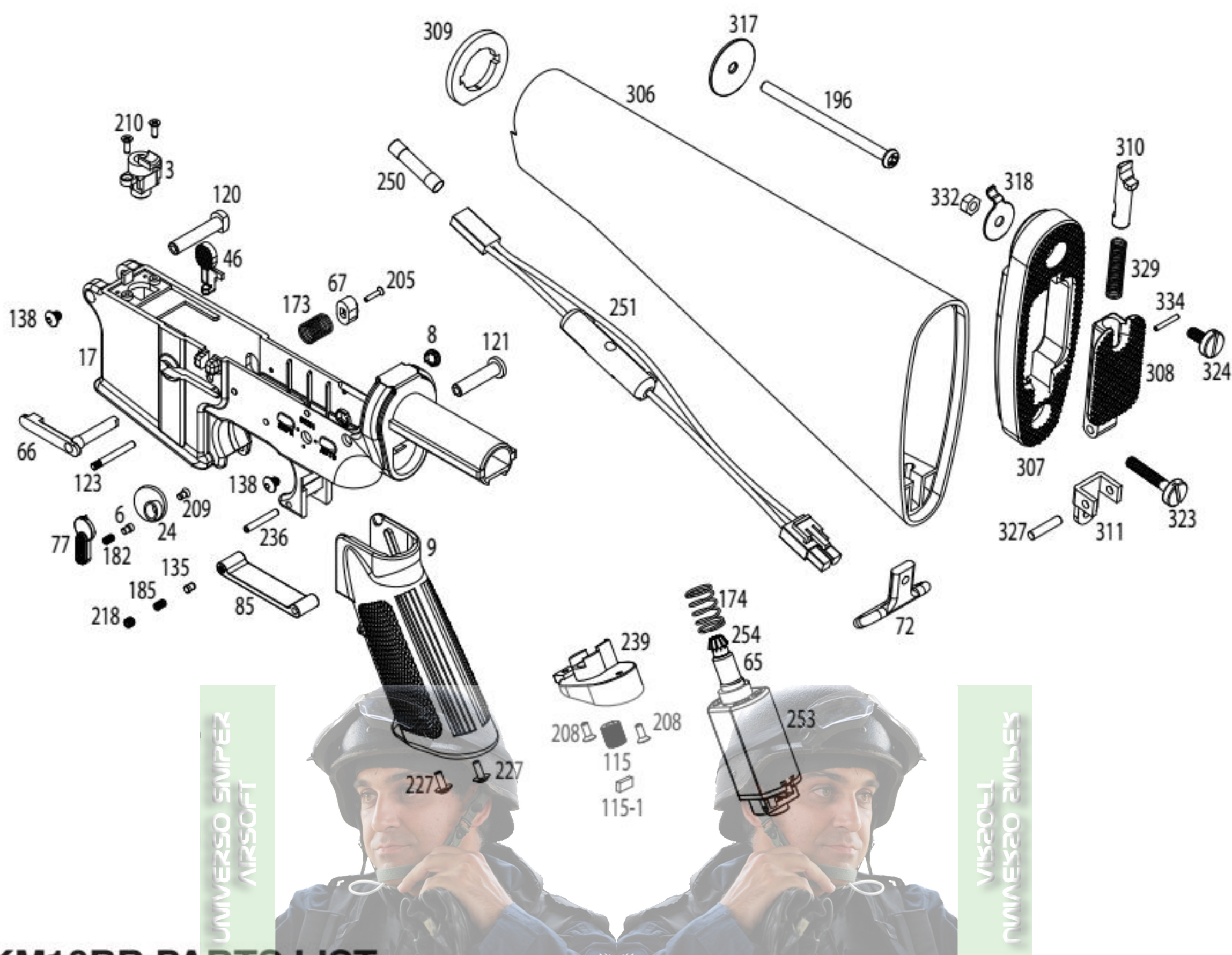
Keep the gun out of the rain and water. This will prevent electrical failure and fluid build-up inside the mechbox. Dry gun completely with clean cloth and clean inner barrel if necessary.



PARTS DIAGRAM



PARTS DIAGRAM



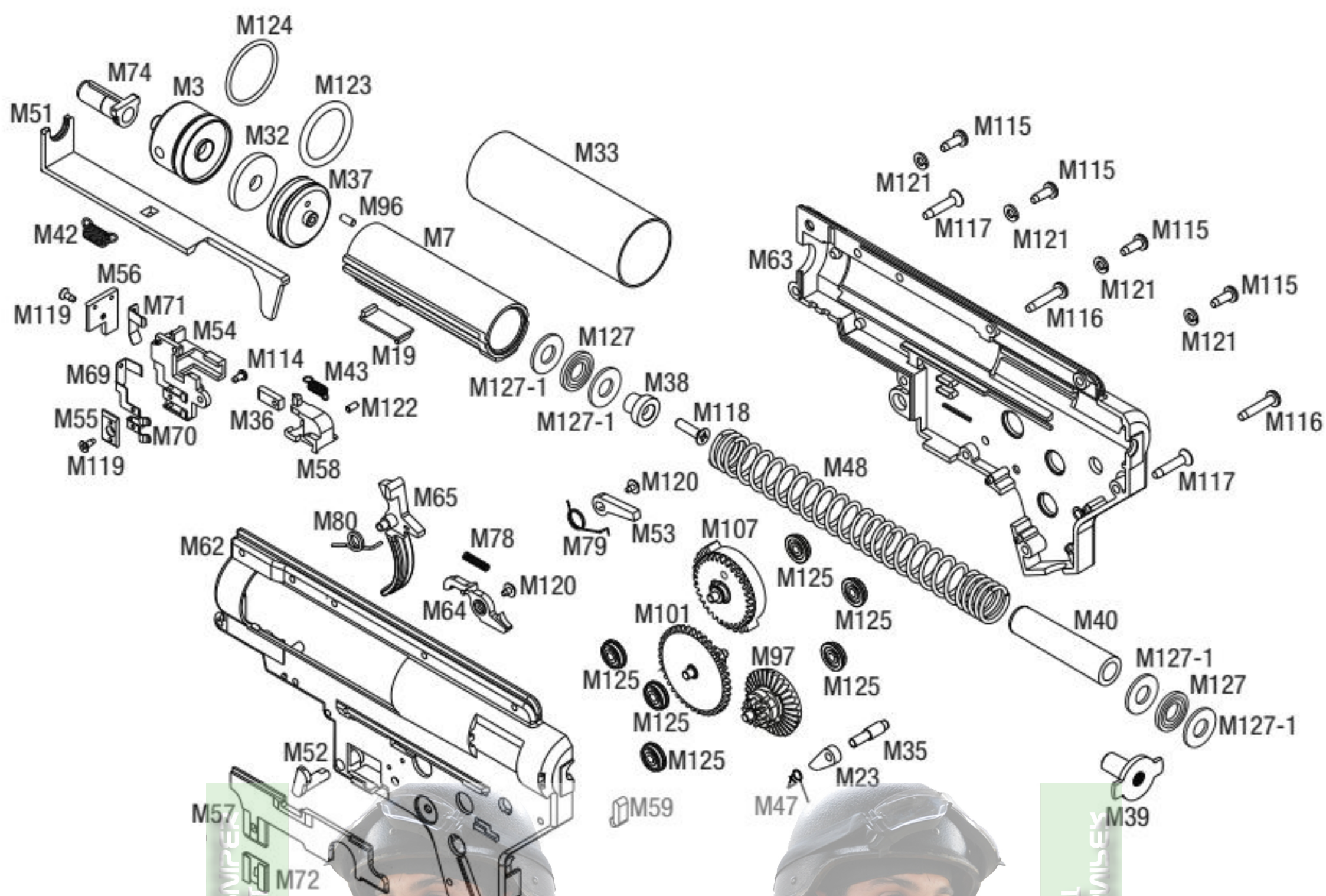
KM16BR PARTS LIST

| Parts # | Description | Parts # | Description | Parts # | Description |
|-------------|-------------------------|-----------|----------------------------------|--------------|---------------------------------|
| KM16BR-1 | Forward Assist Button | KM16BR-19 | Ejection Port Cover Lock Plunger | KM16BR-69 | Ejection Port Cover Lock |
| KM16BR-2 | Inner Barrel Retainer | KM16BR-24 | Selector Plate | KM16BR-72 | Stock Swivel |
| KM16BR-3 | BB Ramp | KM16BR-25 | Charging Handle Spring Hook | KM16BR-77 | Selector |
| KM16BR-4G-6 | Barrel Base Washer | KM16BR-35 | Upper Receiver (Left) | KM16BR-85 | Trigger Guard |
| KM16BR-5 | Hop-Up Chamber | KM16BR-36 | Upper Receiver (Right) | KM16BR-88 | Rail Retaining Block |
| KM16BR-6 | Selector Detente | KM16BR-46 | Bolt Catch | KM16BR-89 | Top Rail Bridge |
| KM16BR-7 | Bolt Plate Carrier | KM16BR-47 | Charging Handle | KM16BR-91 | Swivel Front |
| KM16BR-8 | Selector Cover | KM16BR-48 | Charging Handle Latch | KM16BR-101 | Bolt Plate |
| KM16BR-9 | Grip | KM16BR-49 | Flash Hider | KM16BR-104 | Dust Cover Retainer |
| KM16BR-13 | Hop-Up Adjustment Wheel | KM16BR-65 | Motor Spring Base | KM16BR-114 | Flash Hider Washer |
| KM16BR-14 | Hop-Up Spindle (Small) | KM16BR-66 | Magazine Catch | KM16BR-115 | Motor Adjustment Screw |
| KM16BR-15 | Hop-Up Spindle (Large) | KM16BR-67 | Magazine Catch Button | KM16BR-115-1 | Motor Adjustment Screw Retainer |
| KM16BR-16 | Hop-Up Bar | KM16BR-68 | Ejection Port Cover | KM16BR-120 | Take Down Pin (Front) |
| KM16BR-17 | Lower Receiver | | | KM16BR-121 | Take Down Pin (Rear) |

PARTS LIST

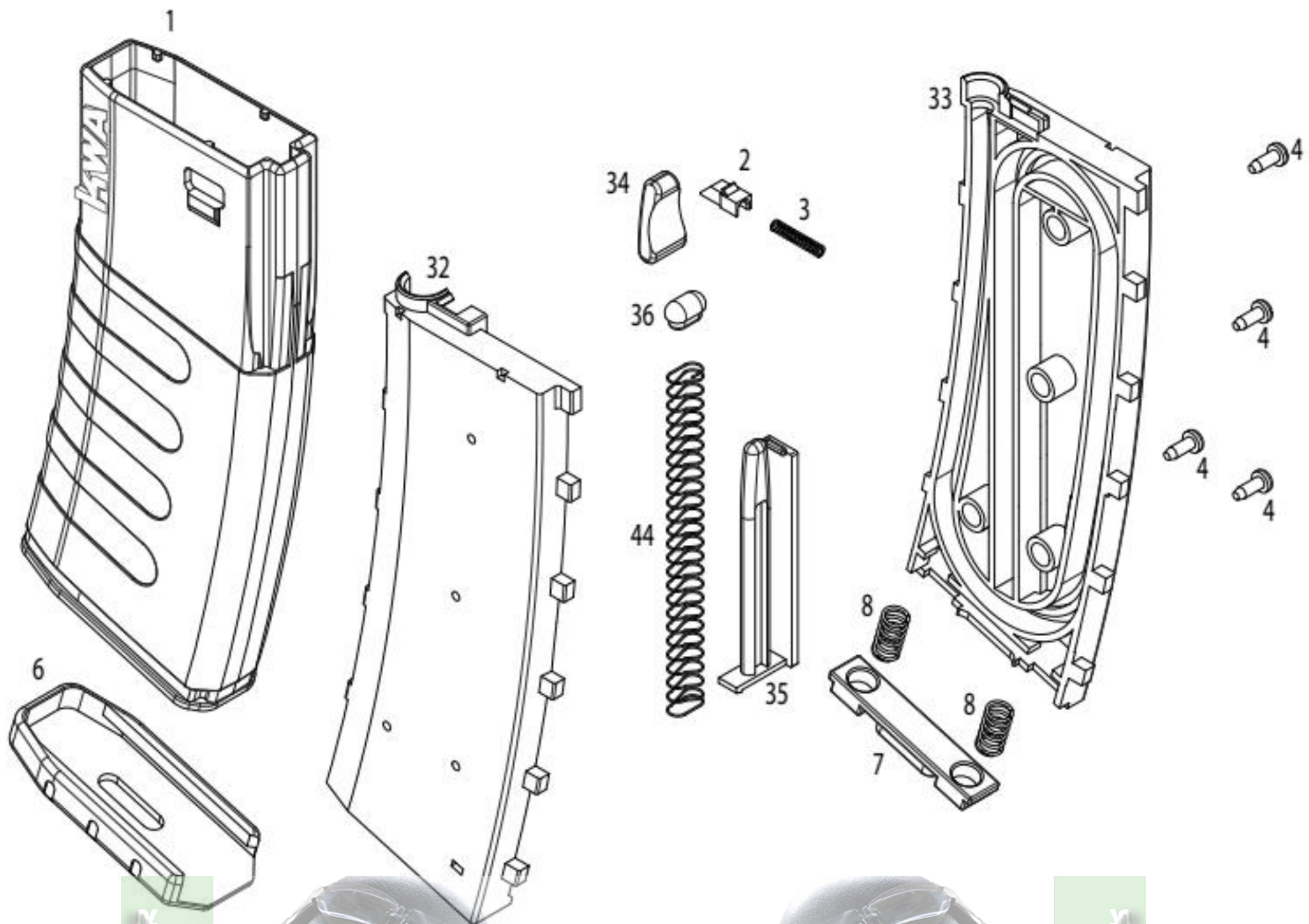
| Parts # | Description | Parts # | Description | Parts # | Description |
|------------|---------------------------------|-------------|----------------------------|-------------|---|
| KM16BR-123 | Gear Box Set Pin | KM16BR-226 | Hop-Up Wheel Screw | KM16BR-293 | Elevation Bar |
| KM16BR-125 | Hop Up Bar Pin | KM16BR-227 | Grip Screws | KM16BR-294 | Rear Sight Elevation Plunger |
| KM16BR-127 | Weaver Rail Pin | KM16BR-229 | Charging Handle Latch Pins | KM16BR-295 | Rear Sight Base Screw |
| KM16BR-128 | Ejection Port Cover Pin | KM16BR-231 | Gas Tube Pin | KM16BR-296 | Elevation Knob Pin |
| KM16BR-135 | Trigger Guard Lock Pin | KM16BR-236 | Trigger Guard Pin | KM16BR-297 | Front Sight Plunger |
| KM16BR-138 | Receiver Pin Screws | KM16BR-239 | Motor Base Plate | KM16BR-298 | Front Sight Housing Pins |
| KM16BR-142 | Top Rail Pin | KM16BR-239U | Front Swivel Pin | KM16BR-300 | Delta Lock Spring |
| KM16BR-158 | Hop-Up Nub | KM16BR-242 | Pin Retaining Ring | KM16BR-301 | Rear Sight Elevation Spring |
| KM16BR-159 | Hop-Up Bucking | KM16BR-243 | Hop-Up Spindle Rings | KM16BR-302 | Windage Knob Spring |
| KM16BR-161 | Forward Assist Button Spring | KM16BR-244 | Locking Clamp | KM16BR-303 | Front Sight Spring |
| KM16BR-162 | Chamber Block Spring | KM16BR-249 | Fuse | KM16BR-306 | Stock |
| KM16BR-163 | Charging Handle Spring | KM16BR-250 | Rear Wire Harness | KM16BR-307 | Butt Plate |
| KM16BR-164 | Charging Handle Latch Spring | KM16BR-251 | Power Supply Wire | KM16BR-308 | Butt Plate Trap Door |
| KM16BR-165 | Flash Hider Spring | KM16BR-252 | Gear Box | KM16BR-309 | Receiver End Plate |
| KM16BR-171 | Hop-Up Bar Spring | KM16BR-253 | Motor | KM16BR-310 | Butt Plate Trap Door Lock |
| KM16BR-173 | Magazine Catch Spring | KM16BR-254 | Pinion Gear | KM16BR-311 | Butt Plate Trap Door Hinge |
| KM16BR-174 | Motor Tension Spring | KM16BR-259 | Rear Sight | KM16BR-312L | Lower Hand Guard |
| KM16BR-175 | Ejection Port Cover Spring | KM16BR-260 | Windage Knob | KM16BR-312T | Top Hand Guard |
| KM16BR-176 | Ejection Port Cover Lock Spring | KM16BR-261 | Elevation Knob Dial Base | KM16BR-316 | Hand Guard End Cap |
| KM16BR-182 | Selector Spring | KM16BR-262 | Elevation Knob Dial | KM16BR-317 | Stock Tube Retainer |
| KM16BR-185 | Trigger Guard Plunger Spring | KM16BR-265 | Barrel Assembly Block | KM16BR-318 | Butt Plate Washer Lock |
| KM16BR-193 | Ejection Port Cover Screw | KM16BR-266 | Weaver Rail | KM16BR-323 | Butt Plate Screw (Large) |
| KM16BR-196 | Stock Screw | KM16BR-267 | Delta Ring | KM16BR-324 | Butt Plate Screw (Small) |
| KM16BR-201 | Sight Base Cover Screws | KM16BR-269 | Barrel Nut | KM16BR-325 | Gas Tube |
| KM16BR-202 | Locking Knob Spacers | KM16BR-271 | Carry Handle | KM16BR-326 | Inner Barrel |
| KM16BR-203 | Screw M2X5 | KM16BR-272 | Sight Base Cover (Front) | KM16BR-327 | Butt Plate Trap Door Hinge Pin |
| KM16BR-204 | Bolt Plate Carrier Screw | KM16BR-273 | Sight Base Cover (Rear) | KM16BR-328 | Outer Barrel |
| KM16BR-205 | Magazine Catch Screw | KM16BR-274 | Rear Sight Housing Base | KM16BR-329 | Butt Plate Trap Door Lock Spring |
| KM16BR-208 | Motor Plate Screws | KM16BR-275 | Front Sight | KM16BR-332 | Butt Plate Bolt |
| KM16BR-209 | Selector Screw | KM16BR-276 | Front Sight Housing Base | KM16BR-334 | Butt Plate Trap Door Lock Retaining Pin |
| KM16BR-210 | BB Ramp Screws | KM16BR-282 | Rear Sight Plate Spring | KM16BR-335 | Barrel Base Pins |
| KM16BR-215 | Windage Knob Set Screw | KM16BR-283 | Carry Handle Locking Plate | | |
| KM16BR-217 | Screw M3X3 SC | KM16BR-290 | Carry Handle Locking Knobs | | |
| KM16BR-218 | Screw M3X8 SC | KM16BR-291 | Windage Knob Plunger | | |
| | | KM16BR-292 | Rear Sight Windage Screw | | |

KWA 2GX TYPE II GEARBOX DIAGRAM AND PARTS LIST



| Parts # | Description | Parts # | Description | Parts # | Description |
|------------|--------------------------------------|-------------|--|---------------|--------------------------------------|
| 2GX.V2-M3 | Gearbox Cylinder Head | 2GX.V2-M55 | Gearbox Power Bridge Plate | 2GX.V2-M107 | Gearbox Sector Gear |
| 2GX.V2-M7 | Gearbox Piston | 2GX.V2-M56 | Gearbox Switch Bridge Plate | 2GX.V2-M114 | Gearbox Wire Harness Base Screw |
| 2GX.V2-M19 | Gearbox Piston Metal Plate | 2GX.V2-M57 | Gearbox Selector Plate | 2GX.V2-M115 | Gearbox Mechbox Screw |
| 2GX.V2-M23 | Anti-Reverse Latch | 2GX.V2-M58 | Gearbox Trigger Switch Block | 2GX.V2-M116 | Gearbox Mechbox Screw |
| 2GX.V2-M32 | Gearbox Cylinder Head Buffer | 2GX.V2-M59 | Gearbox Wire Retainer | 2GX.V2-M117 | Gearbox Mechbox Screw |
| 2GX.V2-M33 | Gearbox Cylinder | 2GX.V2-M62 | Gearbox Mechbox Shell (Left) | 2GX.V2-M118 | Gearbox Piston Head Screw |
| 2GX.V2-M35 | Anti-Reverse Latch Axis | 2GX.V2-M63 | Gearbox Mechbox Shell (Right) | 2GX.V2-M119 | Gearbox Wire Harness Base Screw |
| 2GX.V2-M36 | Gearbox Trigger Switch Contact Plate | 2GX.V2-M64 | Gearbox Cut-off Lever | 2GX.V2-M120 | Gearbox Cut-off Lever Screw |
| 2GX.V2-M37 | Gearbox Piston Head | 2GX.V2-M65 | Gearbox Trigger | 2GX.V2-M121 | Gearbox Mechbox Screw Locking Washer |
| 2GX.V2-M38 | Gearbox Piston Head End Cap | 2GX.V2-M69 | Gearbox Trigger Switch Brush / Power Out | 2GX.V2-M122 | Gearbox Trigger Switch Pin |
| 2GX.V2-M39 | Gearbox Spring Guide End Cap | 2GX.V2-M70 | Gearbox Power Cut-off Brush | 2GX.V2-M123 | Gearbox Piston Head O-Ring |
| 2GX.V2-M40 | Gearbox Spring Guide Rod | 2GX.V2-M71 | Gearbox Trigger Switch Brush / Power In | 2GX.V2-M124 | Gearbox Cylinder Head O-Ring |
| 2GX.V2-M42 | Gearbox Tappet Plate Spring | 2GX.V2-M72 | Gearbox Selector Plate Contact | 2GX.V2-M125 | Gearbox 9mm Bearing Bushing |
| 2GX.V2-M43 | Gearbox Trigger Switch Return Spring | 2GX.V2-M74 | Gearbox Air Nozzle | 2GX.V2-M127 | Gearbox Piston Grooved Washer |
| 2GX.V2-M47 | Gearbox Anti-Reversale Latch Spring | 2GX.V2-M78 | Gearbox Cut-off Lever Spring | 2GX.V2-M127-1 | Gearbox Spring Guide Flat Washer |
| 2GX.V2-M48 | Gearbox Main Spring, M120 | 2GX.V2-M79 | Gearbox Safety Lever Spring | | |
| 2GX.V2-M51 | Gearbox Tappet Plate | 2GX.V2-M80 | Gearbox Trigger Spring | | |
| 2GX.V2-M52 | Gearbox Safety Lever Base | 2GX.V2-M96 | Gearbox Piston Head Set Screw | | |
| 2GX.V2-M53 | Gearbox Safety Lever | 2GX.V2-M97 | Gearbox Bevel Gear | | |
| 2GX.V2-M54 | Gearbox Wire Harness Base | 2GX.V2-M101 | Gearbox Spur Gear | | |

KWA K-120 MAGAZINE DIAGRAM AND PARTS LIST



| Parts # | Description |
|---------------|-----------------------------|
| KWA K-120-MG1 | MAGAZINE BODY |
| KWA K-120-MG2 | MAGAZINE BB STOP |
| KWA K-120-MG3 | MAGAZINE BB STOP SPRING |
| KWA K-120-MG4 | MAGAZINE HOUSING SCREW |
| KWA K-120-MG6 | MAGAZINE BASE PLATE |
| KWA K-120-MG7 | MAGAZINE BASE PLATE STOP |
| KWA K-120-MG8 | MAGAZINE BASE PLATE SPRINGS |

| Parts # | Description |
|----------------|--------------------------------|
| KWA K-120-MG32 | MAGAZINE HOUSING (LEFT PANEL) |
| KWA K-120-MG33 | MAGAZINE HOUSING (RIGHT PANEL) |
| KWA K-120-MG34 | MAGAZINE FOLLOWER |
| KWA K-120-MG35 | MAGAZINE FOLLOWER GUIDE |
| KWA K-120-MG36 | MAGAZINE FOLLOWER LINK |
| KWA K-120-MG44 | MAGAZINE FOLLOWER SPRING |

KWA Performance Industries, Inc.

Copyright © August, 2008 KWA Performance Industries, Inc. All Rights Reserved.