



KRYTAC®

UNIVERSO SIMPER
AIRSOFT



UNIVERSO SIMPER
AIRSOFT

OWNER'S MANUAL

TRIDENT

LMG

Enhanced

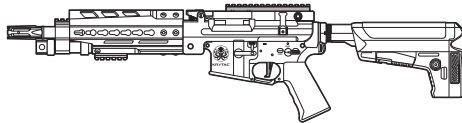


TABLE OF CONTENTS

| | |
|--|----|
| Firearm Safety Rules | 2 |
| Specifications | 4 |
| Meter per Second Diagram | 5 |
| Package Contents | 5 |
| Using the Box Magazine..... | 5 |
| Fire Selector Switch..... | 7 |
| Battery Installation | 8 |
| Hop-Up System | 9 |
| Clearing Jammed BBs..... | 10 |
| Disassembly | 11 |
| Assembly..... | 12 |
| Main Spring Access..... | 13 |
| Cleaning and Maintenance..... | 16 |
| Operating Under Harsh Conditions | 18 |
| Trouble Shooting Guide..... | 19 |
| Contact Information | 20 |
| Component Diagrams and Lists | 21 |



THIS PRODUCT IS NOT INTENDED FOR USE BY UNTRAINED PERSONS (INCLUDING CHILDREN) WITH OR WITHOUT PHYSICAL OR MENTAL HANDICAPS. THESE HANDICAPS INCLUDE REDUCED PHYSICAL, SENSORY OR MENTAL CAPABILITIES, OR LACK OF EXPERIENCE AND KNOWLEDGE OF THE PRODUCT AND SAFETY GUIDELINES. ALL USERS SHOULD HAVE TRAINED SUPERVISION OR INSTRUCTIONS CONCERNING THE USE OF THE APPLIANCE BY A PERSON RESPONSIBLE FOR HIS OR HER SAFETY.

SAFETY RULES

Please read the entire KRYTAC manual before operating the airsoft gun. This manual covers important safety, operational, and maintenance topics. It is important that the user reads and understands the manual in order to safely handle and operate the airsoft gun. Failure to follow the safety guidelines and/or operational instructions in this manual may result in serious personal injury or damage to the airsoft gun.

Safety Guidelines

EYE PROTECTION

Always wear eye protection while shooting, operating, and maintaining your airsoft guns.

FIREARM SAFETY RULES

Always assume that the airsoft gun is loaded. Never assume the chamber is empty based on memory or from someone else's word. An airsoft gun can still fire with the magazine removed.

KEEP YOUR FINGER OFF THE TRIGGER

Remove your finger from the inside of the trigger guard until your sights are aligned on target and you are ready to fire.

MUZZLE CONTROL

Always keep the muzzle of the airsoft gun pointed in a safe direction. Never point the airsoft gun towards anything you do not intend to shoot.

KNOW YOUR TARGET AND ITS SURROUNDINGS (SAFETY DISTANCE)

Take note of objects in front of and beyond your target. Airsoft guns can shoot up to and beyond 150 feet/45 meter and may travel further than intended without an adequate backstop. Never shoot an airsoft gun directly at targets such as rocks, glass, water, or other hard surfaces that may ricochet BBs in unpredictable directions.



WARNING

SAFETY IS YOUR RESPONSIBILITY

The KRYTAC airsoft gun is designed and manufactured to KRYTAC's high standards. It was carefully inspected before it was packaged and shipped from our factory. It is the sole responsibility of the user for its safe use and handling. This airsoft gun is safe unless handled irresponsibly or misused.

BEWARE OF BARREL OBSTRUCTIONS

Ensure that the barrel of your airsoft gun is free and clear of any obstructions prior to firing the airsoft gun. Failure to do so may cause a malfunction, and in some cases damage the airsoft gun.

KEEP THE SAFETY ON

Keep the fire selector set to safe until your sights are aligned on target and you are ready to fire.

SAFETY RULES

FAILURE TO FIRE

If the airsoft gun fails to fire, misfires, or malfunctions, do not look into/down the barrel of the airsoft gun. BBs can jam in the chamber and can launch suddenly while under pressure causing serious injury.

FUSE

DO NOT REMOVE OR BYPASS THE FUSE. It is an integral part of the system, alterations to the fuse will void warranty and may result in operational failure and critical damage to internal components.

MAINTAIN YOUR AIRSOFT GUN PROPERLY

Maintaining your airsoft gun as outlined in the manual ensures that your airsoft gun will be safe to shoot and perform to its designed specifications. Alterations, modifications, or adjustments may damage your airsoft gun, making it unsafe to shoot and/or voiding all warranty claims.

STORAGE AND TRANSPORT

Keep the fire selector on the airsoft gun set to safe, with the magazine and battery removed when storing your airsoft gun. Always store your airsoft gun in a safe place and out of the reach of children. When transporting your airsoft gun make sure that it is in a designated airsoft gun case. Never brandish your airsoft gun in public.



WARNING

IT IS YOUR RESPONSIBILITY TO SAFELY STORE AND TRANSPORT YOUR AIRSOFT GUN.

ORANGE TIP

Any alteration of the coloration or markings required by state and/or federal law may be deemed illegal in a court of law. All risks and responsibility of any alteration to the product will be assumed by the operators, owners and/or user of the product.



WARNING

THE ORANGE TIP DOES NOT DISTINGUISH YOUR AIRSOFT GUN AS A TOY, ALWAYS TREAT YOUR AIRSOFT GUN AS IF IT IS A REAL FIREARM.

HAZARDS OF BEING MISTAKEN FOR A REAL FIREARM

Due to the nature and design of some airsoft guns, they may be mistaken as a real firearm. It is strongly advised to operate an airsoft gun in the safety and privacy of your own home, or at a legally sanctioned location or game field. Police, Peace Officers, and Law Enforcement Officers are trained to treat objects that resemble a firearm as one. In the event that you are approached by a Law Enforcement Official, completely comply with their instructions. Never point an airsoft gun at a Law Enforcement Official. Confrontation with a Law Enforcement Official may result in serious injury or death.

ALCOHOL, MEDICATIONS AND DRUGS

Do not handle or operate your airsoft gun while under the influence of alcohol, medication, or drugs that may impair judgment.

SPECIFICATIONS

TRIDENT LMG ENHANCED



| | |
|-----------------------|-----------------------------------|
| Overall Length | 750 mm (29.53") - 835 mm (32.87") |
| Overall Height | 200 mm (7.87") |
| Weight | 3.5 kg (7.78 lbs) |
| Outer Barrel Length | 230 mm (14.5") |
| Inner Barrel Length | 280 mm |
| Inner Barrel Diameter | 6.05 mm |

CALIBER
6 MM

MECHBOX
Krytac Trident Mechbox
with 8 mm Bearing

RATE OF FIRE
20+ RPS

PERFORMANCE DETAILS ARE BASED ON U.S. SPECIFICATIONS AND CAN BE MODIFIED TO MEET THE LAWS AND REGULATIONS OF YOUR LOCAL REGION.

PRODUCT FEATURES

KRYTAC metal alloy receivers

KRYTAC LMG keymod hand guard

Licensed DEFIANCE® pistol grip

KRYTAC battery stock

6-position numbered buffer tube

Ambidextrous fire selector

MIL-STD 1913 Picatinny top rail

Integrated FET system

Easy maintenance spring guide

Padded cylinder head

Relief-cut cylinder window

Anti-corrosion mechbox coating

Adjustable rotary Hop-Up

KRYTAC 30K high torque motor

PACKAGE CONTENTS

[1] Trident LMG Enhanced airsoft gun

[1] Box magazine

[1] User's manual

[1] Cleaning rod

METER PER SECOND (MPS) DIAGRAM

Please check the chart below to see what the maximum velocity is for your region. If your region requires you to adjust your airsoft gun's velocity, please see Main Spring Access section for instruction.

| Country | Max Velocity | Models |
|---|--------------|---|
| Japan, Italy | 99 m/s | Trident MK II SPR Trident MK II CRB Trident MK II PDW Trident LMG Enhanced Alpha CRB Alpha SDP |
| UK | 110 m/s | |
| Austria, Belgium, Bosnia and Herzegovina, Bulgaria, Croatia, Cyprus, Czech Republic, Denmark, Estonia, Finland, France, Germany, Hungary, Iceland, Latvia, Liechtenstein, Lithuania, Macedonia, Moldavia, Netherlands, Norway Poland, Portugal, Romania, Serbia, Slovakia, Slovenia, Spain, Sweden, Switzerland, U.S.A. | 120 m/s | |
| Canada | 120 m/s | Trident MK II SPR Trident MK II CRB Trident LMG Enhanced |

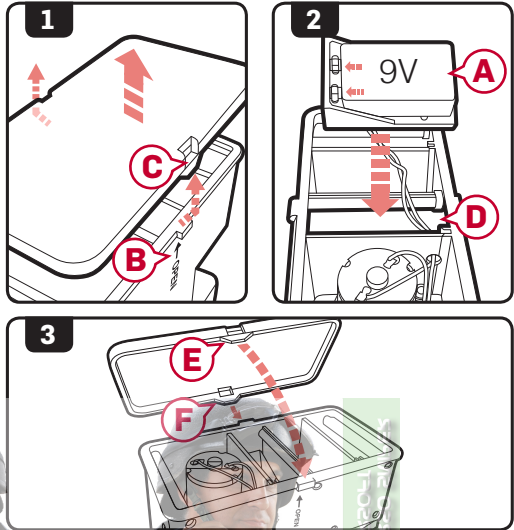


USING THE BOX MAGAZINE

Attaching Battery to the Box Magazine

NOTE The Krytac LMG Box Magazine operates from a single 9 volt battery **(A)** (not included). Install the battery prior to loading the box magazine with BBs.

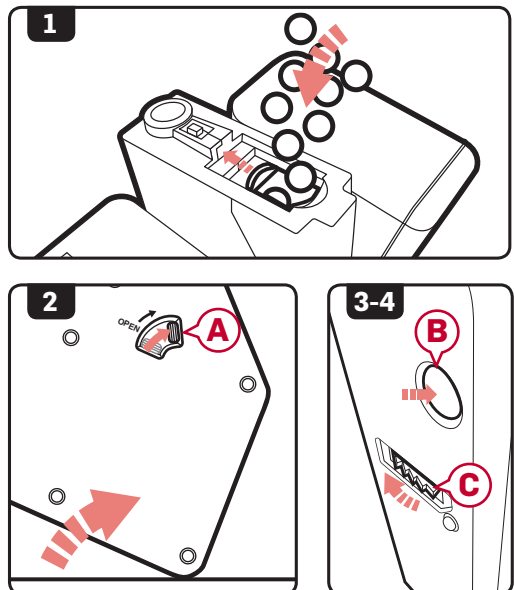
1. Follow the “Open” arrow **(B)** on the back to the locking tab **(C)** and lift the tab up and over to remove the panel.
2. Connect a single 9 volt battery and place into the battery cavity **(D)** in the magazine.
3. Replace the side panel by placing the front locking tab **(E)** on first then secure with the last locking tab **(F)**.



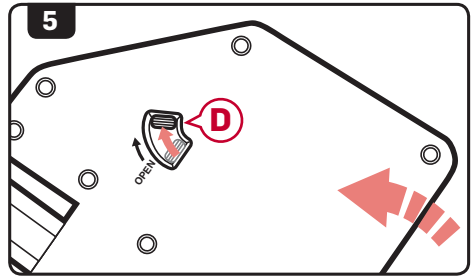
DISCONNECT THE BATTERY WHEN THE MAGAZINE IS NOT IN USE

Loading the Box Magazine

1. Open the door on the top of the box magazine. Pour BBs into the opening until full.
2. Push up the reserve latch **(A)** on the back of the magazine and tilt. This will allow more loading space.
3. Press the loading button **(B)** at the bottom of the magazine until the magazine clicks. The magazine is now ready and loaded.
4. Between shooting, rewind the magazine spring by pressing the button **(B)** or turning the wheel **(C)**. This will ensure a ready magazine.



5. When the main reservoir is empty, turn the magazine sideways and open the reserve latch **D** to load more BBs.



WARNING

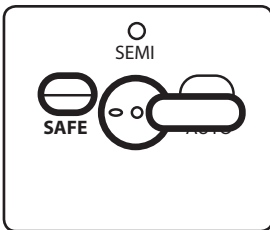
**ALWAYS UNLOAD
MAGAZINE PRIOR
TO STORAGE TO
PRESERVE SPRING
LIFE.**

Troubleshooting: If no BBs are feeding from the box magazine

1. No noise from the box magazine motor.
 - a. Check to see that the battery is properly connected.
 - b. Check to ensure that the battery still has power. If not replace the battery.
2. Makes a noise but does not seem to feed.
 - a. Press the winding button on the bottom of the magazine again to add more tension to the follower.
 - b. Ensure that there are BB's in the main reservoir. If not, load more BB's into the main reservoir from the secondary reservoir or through the BB door.
 - c. The magazine may have an obstruction and will require servicing.

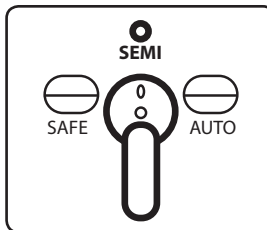
FIRE SELECTOR SWITCH

SAFE MODE



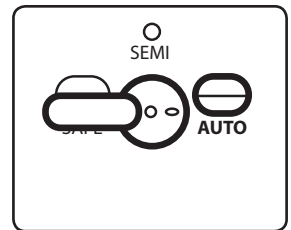
When in safe mode, the trigger will not engage and the airsoft gun will not fire.

SEMI-AUTO MODE



While in semi-auto mode, the airsoft gun will only fire one shot for each time the trigger is engaged.

FULL-AUTO MODE



In full-auto mode, the gun will continuously fire as long as the trigger remains engaged.

**SAFETY
TIP**

It is advised when you are not ready to fire, keep the fire selector switch on the airsoft gun in the safe position.



WARNING

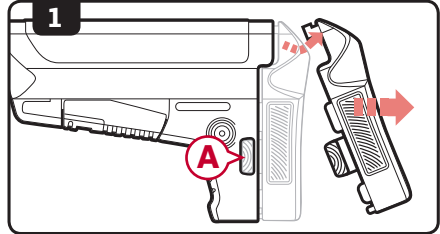
**DO NOT ENGAGE THE TRIGGER WHILE SWITCHING BETWEEN
MODES ON THE FIRE SELECTOR.**

BATTERY INSTALLATION

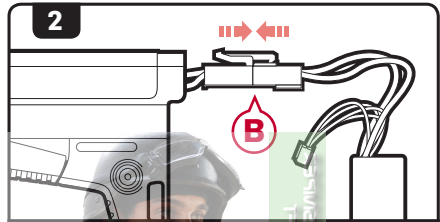


ENSURE THAT THE STOCK IS IN THE FULLY COLLAPSED POSITION BEFORE OPENING THE STOCK COVER. DO NOT REMOVE THE STOCK COMPLETELY FROM THE GUN.

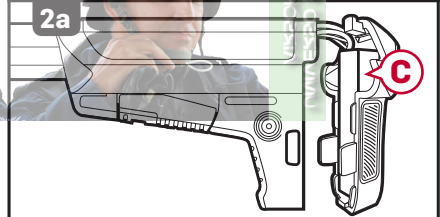
1. Set the fire selector to safe mode and depress the stock cover release button **(A)** on both sides of the stock to lift and remove the cover.



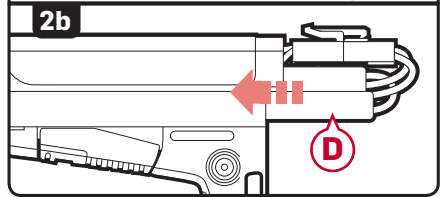
2. Connect either a nunchuck battery or small LiPo battery to the connector and place the battery into the stock. Push the connector plugs **(B)** together firmly until they lock into place.



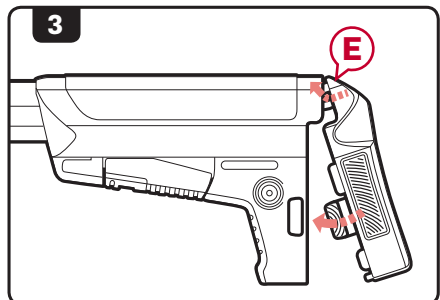
a. Place the small LiPo battery **(C)** so that it rests at the rear of the stock.



b. Place the nunchuck style batteries **(D)** down either side of the battery tubes found on the sides of the stock.



3. Replace the stock cover by first placing the tab **(E)** of the cover into the stock and then rocking the stock cover down into position. Ensure that the stock cover release buttons snap securely into place.



WARNING

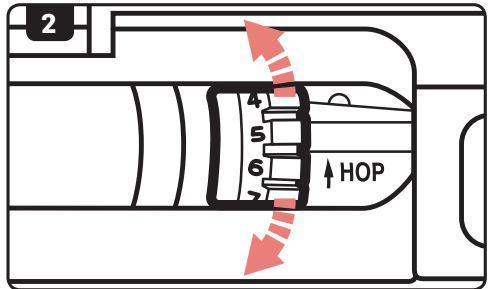
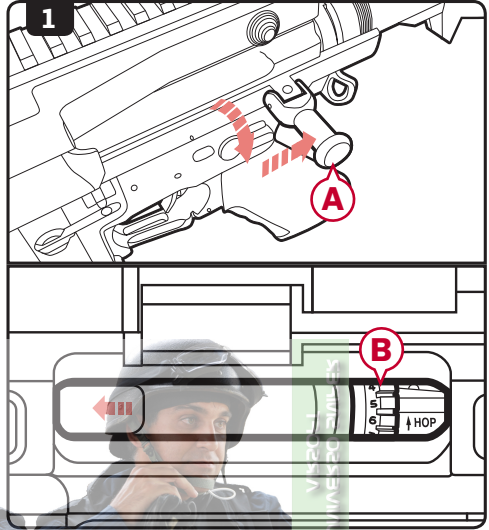
EXCESSIVE PULLING OR TUGGING OF THE BATTERY WIRES WHEN INSERTING OR REMOVING THE BATTERY CAN CAUSE THE FUSE HOUSING TO COME LOOSE OR DAMAGE TO THE GUN.

HOP-UP SYSTEM

The advanced KRYTAC rotary Hop-Up unit is a standard feature in the Trident series AEGs. Proper adjustment of the Hop-Up will allow the AEGs to fire in a variety of shooting environments to obtain optimal BB trajectory.

Hop-Up Adjustment

1. Pull the charging handle (A) downward then rearward. Hold charging handle in position to access the Hop-Up adjustment dial (B).
2. Turn the dial up or down, an audible click will confirm each adjustment.
3. Increasing the number on the dial will increase the amount of Hop-Up on the BB. Decreasing the number will lower the amount of Hop-Up on the BB.



HOP-UP SYSTEM

Excessive Hop-Up

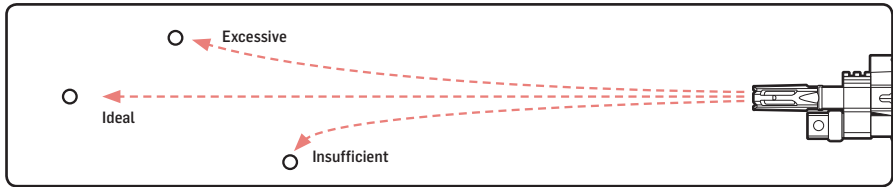
Airsoft BB travels in an extreme upward trajectory. Decrease the Hop-Up.

Ideal Hop-Up

Airsoft BB travels in a long, horizontal flight path.

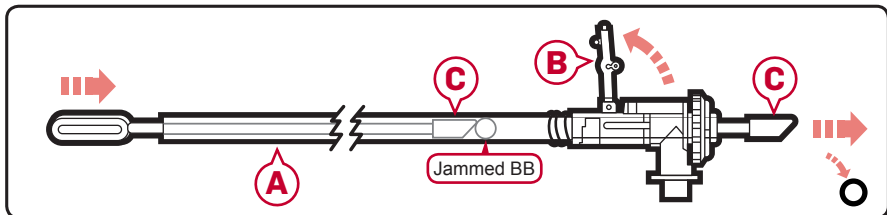
Insufficient Hop-Up

Airsoft BB travels a short distance in a downward trajectory. Increase the Hop-Up.



CLEARING JAMMED BBS

1. Disassemble the airsoft gun and remove the inner barrel assembly **(A)**. (see pg.11for disassembly instruction).
2. Lift the Hop-up lever **(B)** from the inner barrel assembly (refer to step 3 of pg.16).
3. Take the cleaning rod **(C)** and insert the unjamming side from the front of the barrel through to the rear to clear out the jammed BB.
4. Look through the barrel to ensure that it is cleared.
5. Reassemble the airsoft gun. (see pg.12 for assembly instruction).



NOTE

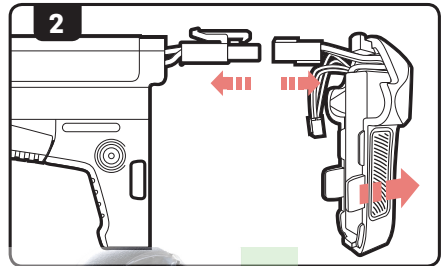
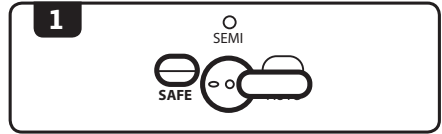
Use only new, quality airsoft BBs. Never use recycled or low quality airsoft BBs, doing so may cause excessive jamming. In most cases, it can severely damage the internal gearbox and/or Hop-Up and inner barrel.

DISASSEMBLY

NOTE

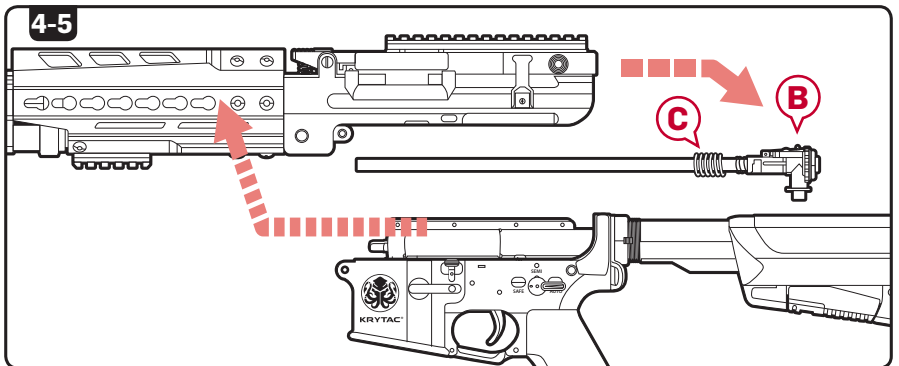
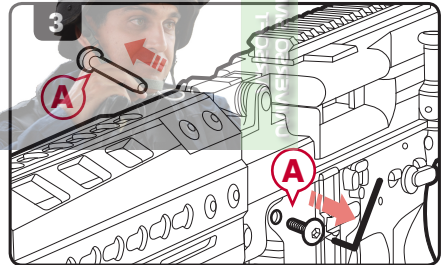
Before opening up the receiver, remove the magazine and fire the airsoft gun in a safe direction to ensure that the Hop-Up chamber is clear of any BBs.

1. Set the AEG to safe mode.
2. Remove the stock cover and disconnect the battery.
3. Remove **ONLY** the front pin **(A)** from the receiver.
4. Completely separate the upper and lower receiver.
5. Slide the Hop-Up and inner barrel assembly **(B)** out of the upper receiver.



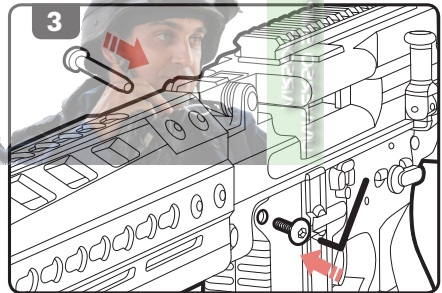
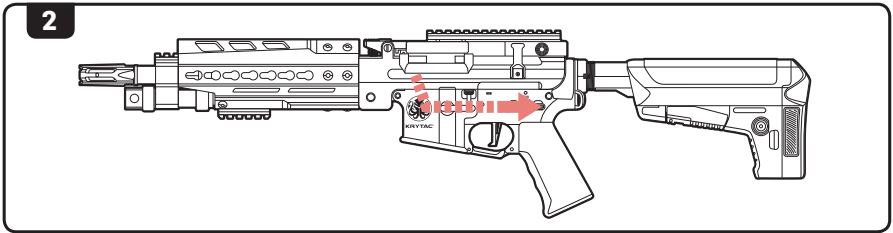
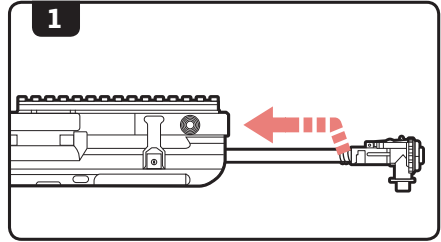
NOTE

KEEP TRACK OF THE HOP-UP TENSION SPRING **(C)** SO IT DOES NOT BECOME LOST DURING DISASSEMBLY.



ASSEMBLY

1. Insert the Hop-Up and inner barrel assembly into the upper receiver. Make sure to line up the hop-up to the receiver.
2. Carefully slide the upper receiver back onto the lower receiver.
3. Reinstall and secure the front body pin.

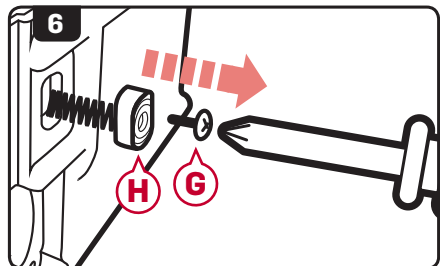
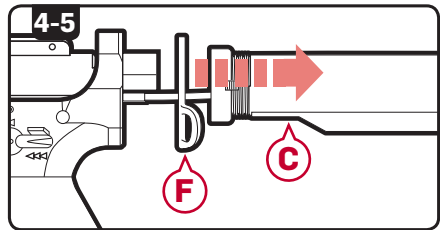
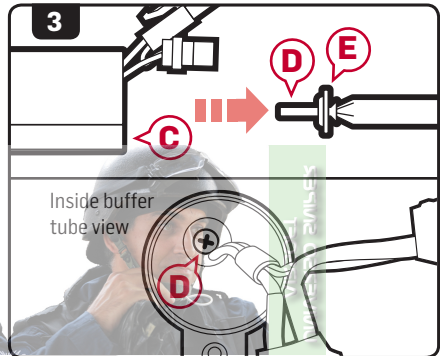
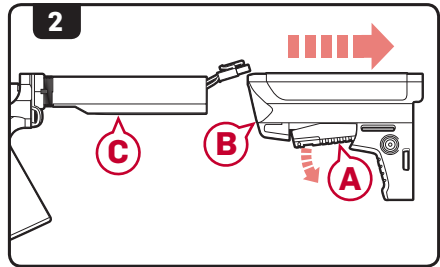


MAIN SPRING ACCESS



PLEASE REVIEW THE WARRANTY CARD INFORMATION BEFORE OPENING AND/OR MODIFYING THE KRYTAC AIRSOFT GUN.

1. Disassemble the airsoft gun. (see pg.11 for disassembly instructions).
2. Pull down on the tab of the stock adjustment lever **(A)**, slide the stock **(B)** rearward and off the buffer tube **(C)**.
3. Use a Phillip (P3) screw driver to remove the screw **(D)** and washer **(E)** from inside the buffer tube **(C)**.
4. Remove the buffer tube **(C)**.
5. Remove the sling plate **(F)**.
6. Remove the screw **(G)** from the magazine release button **(H)** using a Phillip screw driver, then remove the magazine release button **(H)**.



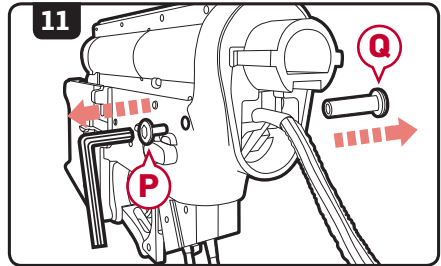
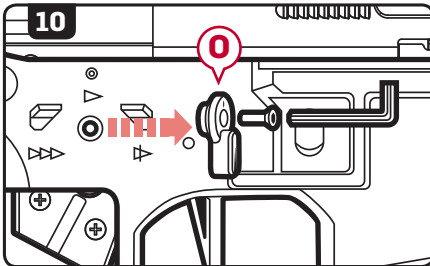
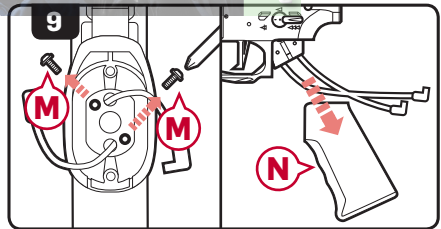
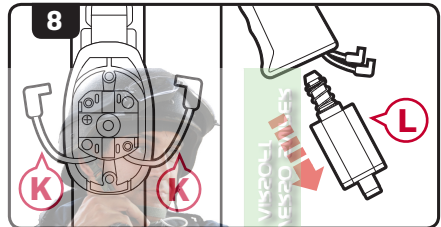
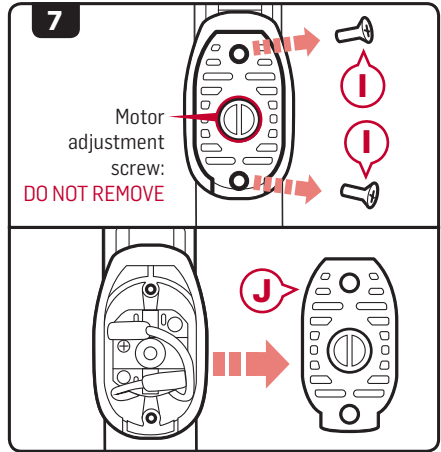
MAIN SPRING ACCESS

7. Use a Phillips screw driver to remove 2 screws **I** on the bottom of the motor plate **J** then remove the motor plate.

NOTE

Take note of the wire and motor orientation before disconnecting.

8. Disconnect the motor wires **K** and remove the motor **L**.
9. Remove 2 Phillips screws **M** at the top of the motor grip interior, then remove the motor grip **N**.
10. Remove the right side selector switch **O** using a 1.5 mm hex key.
11. Use a 2.5 mm hex key to remove the rear receiver pin screw **P** then press the rear receiver pin **Q** in and remove it from the other side of the airsoft gun.



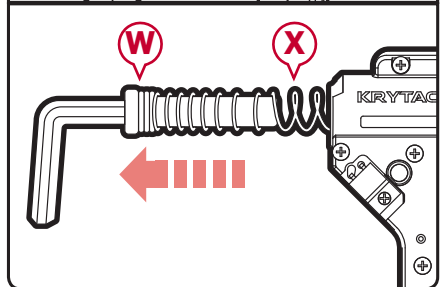
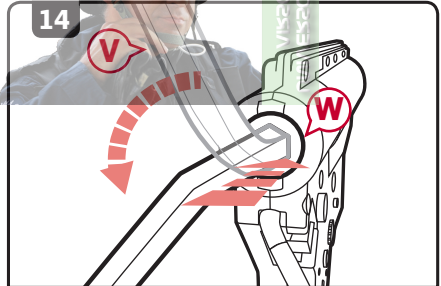
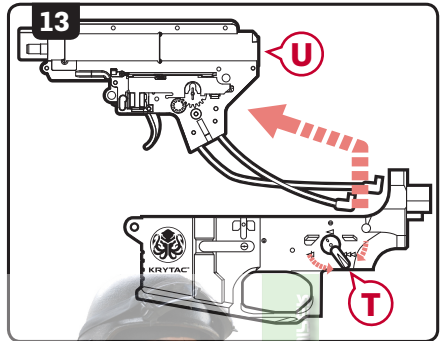
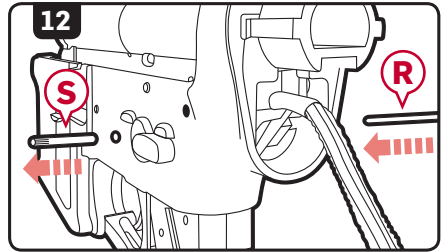
MAIN SPRING ACCESS

12. Use a 2.5 mm punch **(R)** and press the body pin **(S)** in and remove it from the other side of the airsoft gun.
13. Move the selector switch **(T)** half way between safe mode and semi-automatic mode then slide the gearbox **(U)** out of the lower receiver.

NOTE

Spring guide is under extreme pressure. Remove with caution.

14. Use a 8 mm hex key **(V)**, push the spring guide **(W)** into the gearbox, turn 90° counter clockwise then pull the spring guide and spring **(X)** out.
15. Re-insert spring guide with desired spring into gear box. Follow steps in reverse order to reassemble the airsoft gun.

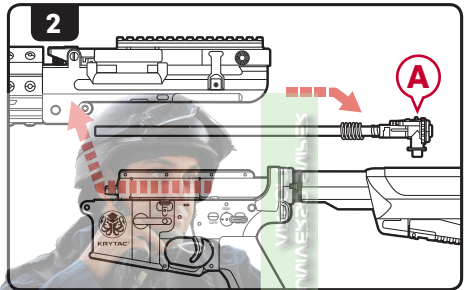
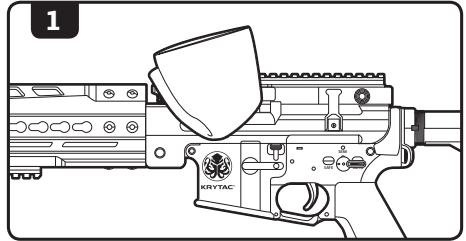


CLEANING AND MAINTENANCE

NOTE

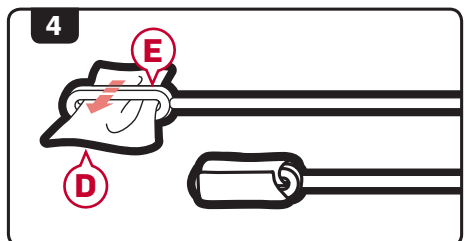
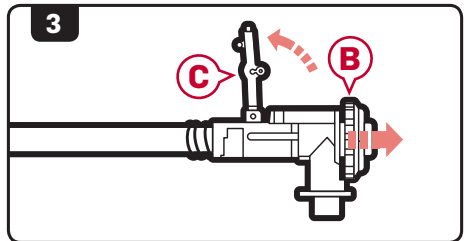
WHILE POINTING THE AIRSOFT GUN IN A SAFE DIRECTION, REMOVE THE MAGAZINE AND CYCLE THE GEARBOX UNTIL NO BBS EXIT THE INNER BARREL. PLACE THE AIRSOFT GUN IN SAFE MODE AND DISCONNECT THE BATTERY PRIOR TO ANY CLEANING PROCEDURES.

1. Wipe down the external parts of the gun and remove any dirt and debris.
2. Disassemble the airsoft gun as described in the Disassembly section and pull out the barrel and Hop-Up assembly (A).
3. Pull back on the Hop-Up adjustment wheel (B) and lift the Hop-Up adjustment lever (C) up.
4. Take a lint-free cleaning patch (D) and place it through the looped end of the cleaning rod (E).



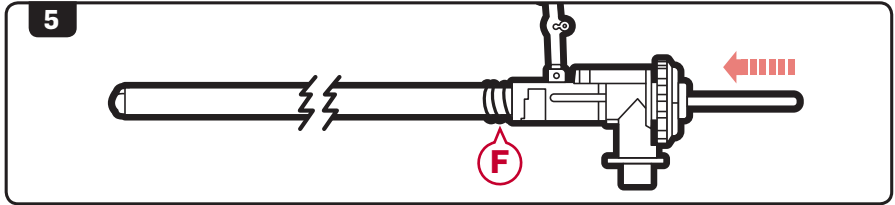
WARNING

DO NOT ADD OIL TO THE HOP-UP BUCKING. EXCESSIVE OIL ON THE HOP-UP BUCKING MAY NEGATE THE HOP-UP, DECREASING RANGE AND ACCURACY.



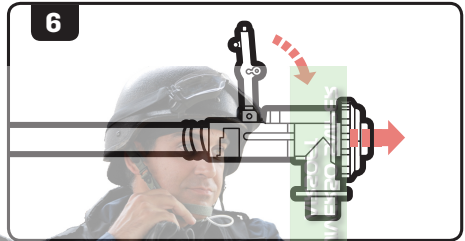
CLEANING AND MAINTENANCE

5. Run the cleaning rod through the barrel from back to front (in the same direction that BBs travel).

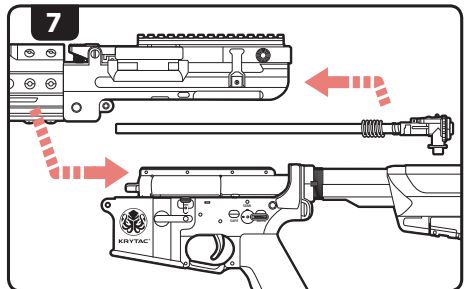


KEEP TRACK OF THE BARREL SPRING (F). IT CAN SEPARATE FROM THE BARREL ASSEMBLY.

6. Pull back on the Hop-Up adjustment wheel and lower the Hop-Up adjustment lever back into position.



7. Reinsert the Hop-Up barrel assembly into the receiver and reassemble as described in the Assembly section.



OPERATING UNDER HARSH CONDITIONS

When operating under harsh conditions, special maintenance may be required to match the climate conditions of a specific operational area.

Dust and Sand

In harsh dusty or sandy environments, excessive debris can cause malfunctions and/or excessive wear on parts. Keep the gun covered and protected while not in use. When performing maintenance, use lubrication sparingly as it tends to attract dirt and other particles. After use in a dusty or sandy area, always field strip the gun, as outlined in the Disassembly section, cleaning all the areas that can be reached with a soft, clean, lint-free cloth.

Heavy Rain

Never submerge or expose your gun to extremely wet environments. Exposure to such conditions may cause electrical failure and fluid to build-up inside the gearbox. Dry completely with a clean, lint-free cloth and clean inner barrel when necessary.



TROUBLE SHOOTING GUIDE



WHEN TROUBLESHOOTING, FOLLOW THE SAFETY MEASURES DESCRIBED IN THIS MANUAL.

| SYMPTOMS | CAUSE | SOLUTIONS |
|--|---|--|
| Not firing/No sound | Safety is engaged | Change selector to Semi Auto or Full Automatic Mode |
| | Low power or dead battery | Charge and replace battery |
| | Blown out fuse | Replace with new fuse |
| | Loose connection | Contact customer service for professional care |
| Motor is running but not firing | Inspect magazine | Check if magazine is properly loaded into the gun Ensure magazine is loaded with ammunition Ensure the hi-cap magazine is properly wound |
| Motor or battery is hot after short use | Damaged battery | Inspect and/or replace battery |
| | Loose connection terminal | Contact customer service for professional care |
| Semi-Auto feature not functioning properly | Battery voltage or discharge is too high | Condition or replace battery |
| Semi-Auto feature not working at all | Disconnecter is not engaged properly | Reset the disconnecter by setting the selector to safe, then to automatic, then to semi |
| Firing cycle slowing down | Battery is low on power | Charge or replace battery |
| High pitch or grinding noise | Motor level is not adjusted properly | Contact customer service for professional care |
| BB travels upward | Hop-Up adjusted too high | Dial down the Hop-Up adjustment |
| BB travels downward | Hop-Up adjusted too low | Dial up the Hop-Up adjustment |
| BB double feeding or rolling out of the barrel | Excessive grease or oil in the hopup chamber | Fire at least 200 rounds to eliminate excessive grease from the chamber Clean Hop-Up unit with supplied cleaning rod |
| | Hop-Up unit is turned off | Turn Hop-Up unit on |
| Hop-Up unit can't be adjusted | Hop-Up adjustment arm is not set properly | Reset Hop-Up adjustment arm (See page 17, step 6 for reassembly) |
| Inner barrel is jammed or jamming | Use of recycled or low quality BBs | Use only KRYTAC branded or other high quality BBs |
| | Inner Barrel is contaminated with BBs or debris | Clear and/or clean inner barrel with supplied cleaning rod (See page 10 for clearing jam section and page 16 for cleaning and maintenance section) |
| Hi-Cap magazine not feeding | Magazine has not been wound | Wind wheel underneath magazine |
| | BBs are lodged inside the magazine | Shake or tap magazine to clear the jam |
| | Internal obstruction | Contact customer service for professional care |

CONTACT INFORMATION

For additional troubleshooting, information, or questions regarding KRYTAC customer service:

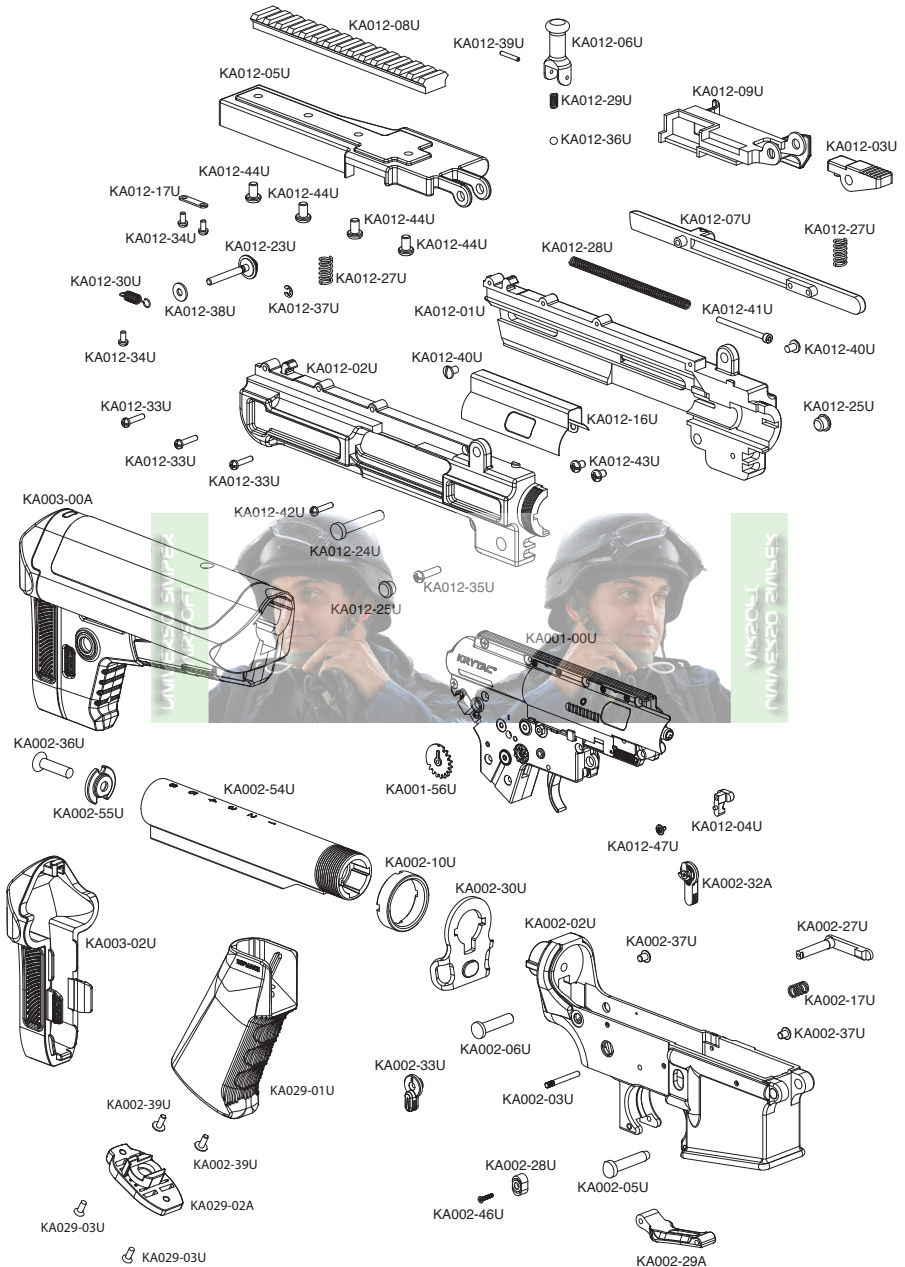
Submit a contact form at: www.krytac.com

Email us at: customerservice@krytac.com

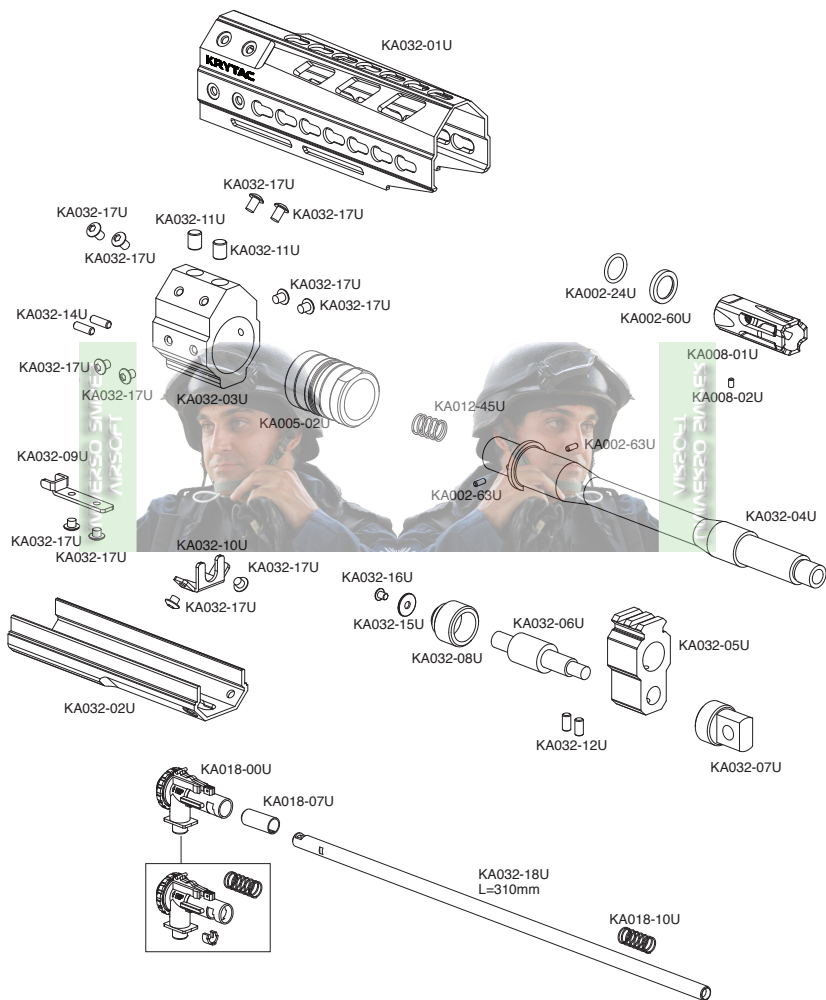
Join the KRYTAC Community and visit **<http://forums.krytac.com>** for any additional technical questions and information about your KRYTAC.



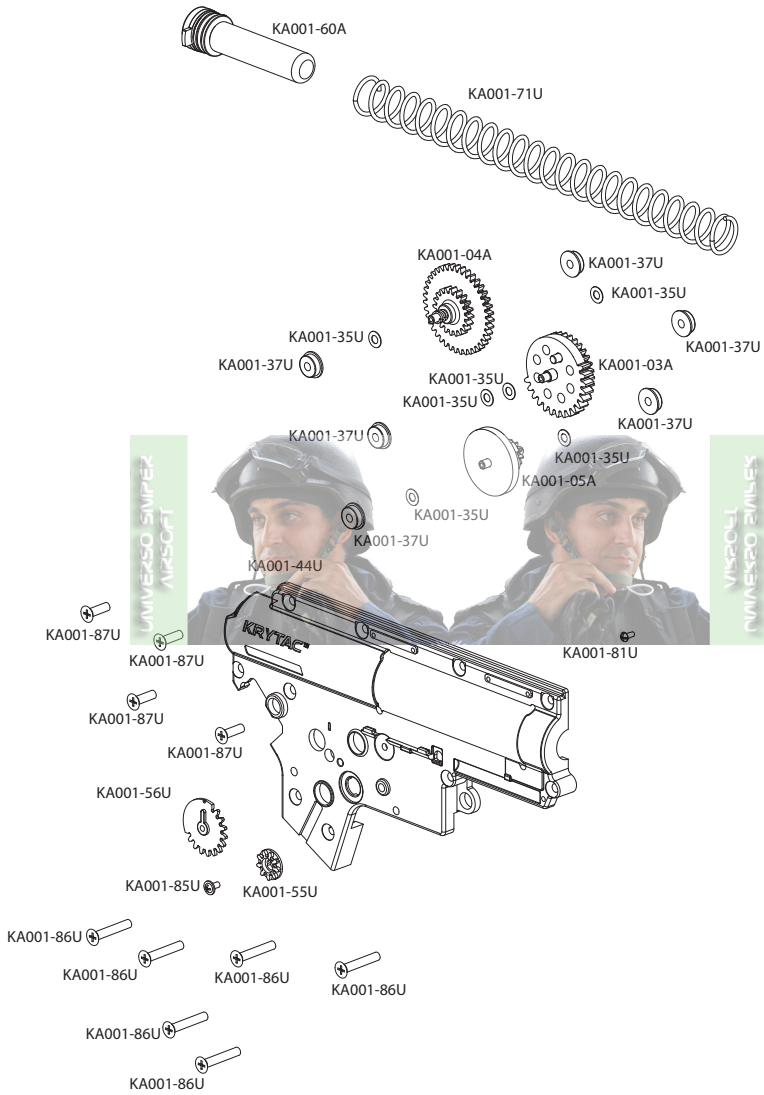
COMPONENT DIAGRAM: LMG ENHANCED



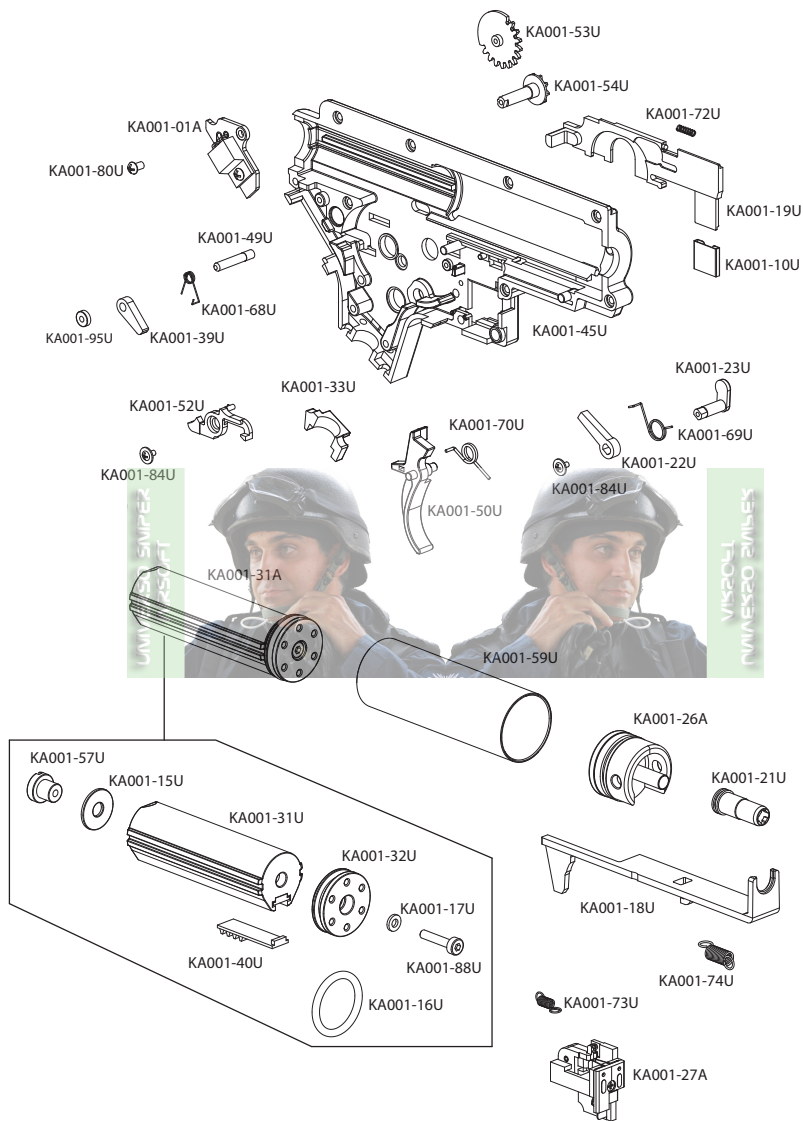
COMPONENT DIAGRAM: LMG ENHANCED



COMPONENT DIAGRAM: LMG GEARBOX



COMPONENT DIAGRAM: LMG GEARBOX



COMPONENT LIST: LMG ENHANCED

| PART # | NAME | |
|-----------|-----------------------------|--|
| | | KA001-59U CYLINDER |
| KA001-00U | GEARBOX | KA001-60A SPRING GUIDE ASSEMBLY |
| KA001-01A | MOSFET ASSEMBLY | KA001-68U ANTI-REVERSE LATCH SPRING |
| KA001-03A | SECTOR GEAR | KA001-69U SAFETY BLOCK SPRING |
| KA001-04A | SPUR GEAR | KA001-70U TRIGGER SPRING |
| KA001-05A | BEVEL GEAR | KA001-71U MAIN SPRING |
| KA001-10U | CONTACT (SELECTOR) | KA001-72U DISCONNECT SPRING |
| KA001-15U | MAIN SPRING SHIM | KA001-73U SWITCH SPRING |
| KA001-16U | PISTON HEAD O-RING | KA001-74U TAPPET PLATE SPRING |
| KA001-17U | PISTON HEAD SHIM | KA001-84U FLAT MICRO SCREW (2) |
| KA001-18U | TAPPET PLATE | KA001-85U SELECTOR TRANSFER GEAR SCREW |
| KA001-19U | SELECTOR PLATE | |
| KA001-21U | AIR NOZZLE | KA001-86U GEARBOX SHELL SCREW (LONG)(6) |
| KA001-22U | SAFETY BLOCK | KA001-87U GEARBOX SHELL SCREW (SHORT)(4) |
| KA001-23U | SAFETY BLOCK LEVER | KA001-88U PISTON HEAD SCREW |
| KA001-26A | CYLINDER HEAD ASSEMBLY | KA001-95U ANTI-RELEASE LATCH BUSHING |
| KA001-27A | SWITCH ASSEMBLY | KA002-02U LOWER RECEIVER |
| KA001-31A | PISTON ASSEMBLY | KA002-03U GEARBOX PIN |
| KA001-31U | PISTON BODY | KA002-05U FRONT RECEIVER PIN |
| KA001-32U | PISTON HEAD | KA002-06U REAR RECEIVER PIN |
| KA001-33U | WIRING COVER | KA002-10U CASTLE NUT |
| KA001-35U | SHIM (6) | KA002-17U MAGAZINE RELEASE SPRING |
| KA001-37U | BEARING | KA002-24U CRUSH WASHER O-RING |
| KA001-39U | ANTI-REVERSE LATCH | KA002-27U MAGAZINE RELEASE |
| KA001-40U | PISTON TOOTH RACK | KA002-28U MAGAZINE RELEASE BUTTON |
| KA001-44U | GEARBOX SHELL (RIGHT) | KA002-29A TRIGGER GUARD ASSEMBLY |
| KA001-45U | GEARBOX SHELL (LEFT) | KA002-30U SLING PLATE |
| KA001-49U | ANTI-REVERSE LATCH PIN | KA002-32A LEFT SELECTOR ASSEMBLY |
| KA001-50U | TRIGGER | KA002-33U RIGHT SELECTOR |
| KA001-52U | DISCONNECT LEVER | KA002-36U BUFFER TUBE SCREW |
| KA001-53U | SELECTOR GEAR (LEFT) | KA002-37U RECEIVER PIN SCREW CAP (2) |
| KA001-54U | SELECTOR TRANSFER AXIS GEAR | KA002-39U PISTOL GRIP SCREW |
| KA001-55U | SELECTOR TRANSFER CAP GEAR | KA002-46U MAGAZINE RELEASE SCREW |
| KA001-56U | SELECTOR GEAR (RIGHT) | KA002-53U RIGHT SELECTOR SCREW |
| KA001-57U | PISTON HEAD NUT | |

COMPONENT LIST: LMGENHANCED

| | | | |
|-----------|--------------------------------|-----------|----------------------------|
| KA002-54U | BUFFER TUBE | KA012-37U | DUST COVER RELEASE CLIP |
| KA002-55U | BUFFER TUBE SCREW CAP | KA012-38U | DUST COVER RELEASE WASHER |
| KA002-60U | CRUSH WASHER | KA012-39U | CHARGING HANDLE PIN |
| KA002-63U | BARREL BASE PIN (2) | KA012-40U | BATTERY TRAY SCREWS |
| KA003-00A | STOCK ASSEMBLY | KA012-41U | CHARGING SPRING GUIDE |
| KA003-02U | BUTTPAD | KA012-42U | RECEIVER PANEL SHORT SCREW |
| KA005-02U | BARREL NUT | KA012-43U | BOLT COVER SCREWS |
| KA008-01U | FLASH HIDER | KA012-44U | DUST COVER SCREWS |
| KA008-02U | SET SCREW | KA012-45U | HOP-UP TENSION SPRING |
| KA012-01U | RECEIVER PANEL (LEFT) | KA012-47U | BOLT RELEASE SCREW |
| KA012-02U | RECEIVER PANEL (RIGHT) | KA018-00U | HOP-UP ASSEMBLY |
| KA012-03U | MOCK RELEASE LEVER | KA018-07U | BUCKING |
| KA012-04U | LMG BOLT RELEASE | KA018-10U | TENSION SPRING |
| KA012-05U | LMG DUST COVER | KA029-01U | PISTOL GRIP |
| KA012-06U | LMG CHARGING HANDLE | KA029-02A | MOTOR PLATE ASSEMBLY |
| KA012-07U | CHARGING SLIDE | KA029-03U | MOTOR PLATE SCREW |
| KA012-08U | LMG RAILS | KA032-01U | UPPER HANDGUARD |
| KA012-09U | LMG FEED TRAY | KA032-02U | LOWER HANDGUARD |
| KA012-16U | MOCK BOLT COVER | KA032-03U | HANDGUARD SPACER |
| KA012-17U | DUST COVER RELEASE PLATE | KA032-04U | OUTER BARREL |
| KA012-23U | DUST COVER RELEASE | KA032-05U | GAS BLOCK |
| KA012-24U | LMG DUST COVER PIN | KA032-06U | GAS ROD |
| KA012-25U | RECEIVER PANEL CROSSBOLT CAPS | KA032-07U | GAS NUT |
| KA012-27U | LMG DUST COVER SPRING | KA032-08U | HANDGUARD NUT |
| KA012-28U | CHARGING SLIDE SPRING | KA032-09U | HANDGUARD HOOK |
| KA012-29U | CHARGING HANDLE SPRING | KA032-10U | HANDGUARD LOCK |
| KA012-30U | DUST COVER RELEASE SPRING | KA032-11U | BARREL NUT SCREWS (2) |
| KA012-33U | RECEIVER PANEL TOP SCREWS | KA032-12U | GAS BLOCK SCREWS (2) |
| KA012-34U | DUST COVER RELEASE SCREWS | KA032-14U | BARREL NUT PINS (2) |
| KA012-35U | RECEIVER PANEL CROSSBOLT SCREW | KA032-15U | HANDGUARD WASHER |
| KA012-36U | CHARGING HANDLE DETENTE BALL | KA032-16U | GAS ROD SCREW |
| | | KA032-17U | HANDGUARD SCREWS (12) |
| | | KA032-18U | INNER BARREL (310 MM) |

UNIVERSO SIMPER
AIRSOFT



UNIVERSO SIMPER
AIRSOFT

www.krytac.com

© Copyright 2015
KRISS INDUSTRIES ASIA
Subject to change

V.MLTY02 R.2016.05.31

CE