

PRECAUTION

AIR SPORTS GUNS ARE DESIGNED FOR PERSONS OF AGE 18 OR OLDER FOR SPORTING PURPOSE ONLY AND TO BE OPERATED UNDER THE U.S. FIREARMS SAFETY CODES. THE EFFECTIVE SHOOTING RANGE IS APPROXIMATELY 160 FEET AND CAN BE AFFECTED BY SURROUNDING CONDITIONS, SUCH AS TEMPERATURE, WIND, ETC. IT IS STRONGLY RECOMMENDED TO USE THE AIR SPORTS GUN IN A SAFE DESIGNATED SHOOTING RANGE OR AREA AND TO TREAT ALL AIR SPORTS GUNS AS REAL FIREARMS. AIR SPORTS GUNS CAN BE DANGEROUS AND CAN CAUSE SERIOUS INJURY, IT IS THE USER'S RESPONSIBILITY TO HANDLE AIR SPORTS GUNS IN A SAFE MANNER. BE SURE TO TREAT ALL AIR SPORTS GUNS AS IF THEY WERE LOADED AND NEVER POINT AT ANYONE OR OBJECTS THAT YOU DO NOT INTEND TO SHOOT. ONLY AIM YOUR AIR SPORTS GUN IN A SAFE DIRECTION. U.S. FEDERAL LAW REQUIRES A MINIMUM 6MM ORANGE MARKING ON ANY FIREARM REPLICAS AND BY REMOVING THE ORANGE TIP, YOU ARE VIOLATING THE LAW AND IT CAN ENDANGER YOURSELF AND OTHERS.

THE AIR SPORTS GUNS ARE NOT TOYS, ALTHOUGH THEY FIRE 6MM PLASTIC BB'S AT RELATIVELY LOW VELOCITY, THERE ARE STILL HIGH RISKS FOR PERSONAL INJURY IF PROPER PROTECTIVE GEAR IS NOT WORN. REMEMBER, THE AIR SPORTS GUNS RESEMBLE REAL FIREARMS IN APPEARANCE, SIZE AND SOME FUNCTIONAL RESPECTS, THEREFORE, IT IS RECOMMENDED THAT YOU SHOULD NEVER CARRY OR DISPLAY THE AIR SPORTS GUN IN PUBLIC AREAS. ANY CRIMES COMMITTED WITH AN AIR SPORTS GUN WILL BE PROSECUTED AS IF A REAL FIREARM WERE USED. BE SURE NOT TO POINT THE AIR SPORTS GUNS AT ANY LAW ENFORCEMENT OFFICERS OR ANY OTHER ARMED PERSONS, DOING SO, MAY PUT YOURSELF IN A VERY DANGEROUS SITUATION. **REMEMBER, AIR SPORTS GUNS ARE NOT TOYS.**



ALL USERS MUST WEAR SHOOTING OR SAFETY GLASSES AT ALL TIMES.

- ◆ READ THE OWNER'S MANUAL BEFORE HANDLING AND LOADING THE GUN
- ◆ TREAT ALL AIR SPORTS GUNS AS IF THEY WERE LOADED AT ALL TIMES
- ◆ NEVER POINT AT ANYONE OR OBJECTS YOU DO NOT INTEND TO SHOOT
- ◆ ALWAYS POINT MUZZLE IN A SAFE DIRECTION
- ◆ MAKE SURE YOUR SHOOTING DIRECTION IS FREE OF OBSTACLES BEFORE YOU SHOOT
- ◆ DO NOT LOAD ANY AIR SPORTS GUN UNTIL YOU ARE READY TO FIRE
- ◆ ALWAYS KEEP THE SAFETY ON AND NEVER PLACE YOUR FINGER ON THE TRIGGER UNTIL YOU ARE READY TO FIRE
- ◆ ALWAYS EXAMINE AND UNLOAD THE GUN WHEN NOT IN USE. STORE IT IN A SAFE MANNER AND KEEP AWAY FROM CHILDREN
- ◆ DO NOT PEEP AT THE MUZZLE
- ◆ NEVER SHOOT AT ANY ROCKS, WATER OR ANY HARD SURFACES AS THEY MAY CAUSE THE BB'S TO RICOCHET
- ◆ ALWAYS USE THE PROPER 6MM CALIBER BB'S AND NEVER REUSE BB'S
- ◆ NEVER JUMP, CLIMB OR CROSS OBSTACLES WITH A LOADED AIR SPORTS GUN. ALWAYS UNLOAD THE GUN FIRST
- ◆ NEVER LEAVE A LOADED WEAPON UNATTENDED. AIR SPORTS GUNS ARE CERTAINLY NO EXCEPTION TO THIS RULE
- ◆ ACCIDENTS USUALLY RESULT FROM NEGLIGENCE OF BASIC SAFETY RULES

CHOKING HAZARD! AIRSOFT BB'S CAN BE A CHOKING HAZARD. ALWAYS RETRIEVE BB'S AFTER SHOOTING AND KEEP AWAY FROM CHILDREN.

WARNING! DO NOT ALTER YOUR AIR SPORTS GUN. BY DOING SO, MAY MAKE IT UNSAFE, AND VOID THE WARRANTY, AND AFFECT THE RELIABILITY OF THE PRODUCT.

[1] CHARGING GAS

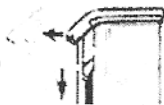
- (1) RELEASE MAGAZINE BY PRESSING MAGAZINE CATCH.

CAUTION! AVOID MAGAZINE TO DROP FREELY ON HARD SURFACE; IT MAY DAMAGE THE MAGAZINE.

- (2) HOLD MAGAZINE UP SIDE DOWN, RELEASE BASE PLATE LOCK, THEN GENTELY PUSH BASE PLATE FORWARD TO REVEAL CHARGING VALVE.

- (3) PUSH THE GAS CANISTER NOZZLE INTO THE CHARGING VALVE. MAKE SURE THE CANISTER IS IN A VERTICAL POSITION WHEN CHARGING.

- (4) CHARGE MAGAZINE UNTIL GAS OVERFLOWS FROM CHARGING VALVE.



WARNING!

- CHECK CANISTER FOR ANY CRACKS OR LEAKS BEFORE USING
- DO NOT EXPOSE TEMPERATURE OVER 40 °C
- DO NOT LEAVE CANISTER DIRECTLY OVER FIRE
- DO NOT BOIL CANISTER
- KEEP CANISTER AWAY FROM DIRECT SUNLIGHT
- DO NOT LEAVE CANISTERS IN VEHICLES



NOTES: IT IS NORMAL THAT YOU MAY EXPERIENCE MINOR LEAKING FROM CHARGING VALVE DURING CHARGING, DUE TO HIGH PRESSURE BUILT UP INSIDE MAGAZINE. IT IS RECOMMENDED TO KEEP GAS RELEASE VALVE SLIGHTLY OILED. IDEAL TEMPERATURE FOR SHOOTING IS ROOM TEMPERATURE.

CAUTION: YOU MAY EXPERIENCE A DELAY ACTION IF SURROUNDING TEMPERATURE DROPS BELOW 68 °F. REMEMBER, DO NOT EXPOSE MAGAZINE DIRECTLY UNDER THE SUN OR INCINERATE THE MAGAZINE. IT MAY CAUSE BURSTING. IT IS STRONGLY RECOMMENDED TO EMPTY GAS FROM MAGAZINE AFTER SHOOTING. BE SURE TO AVOID DIRECT GAS CONTACT WITH EYES OR SKIN WHEN GAS IS BEING RELEASED, IT MAY CAUSE FROSTBITE.

CAUTION: ALWAYS KEEP "SAFETY" ON WHEN LOADING BB'S AND KEEP FINGERS AWAY FROM TRIGGER UNTIL YOU ARE READY TO SHOOT.

[2] LOADING BB'S

- 1- PLACE LOADER PIPE ONTO LOADER FUNNEL
- 2- PLACE LOADER FUNNEL ON TOP OF MAGAZINE LIP
- 3- POUR BB'S ONTO LOADER PIPE. (DO NOT EXCEED 28 BB'S PER-LOADING)
- 4- USE LOADER ROD TO PUSH BB'S DOWN INTO MAGAZINE
- 5- MAKE SURE TO HAVE A 3MM CLEARANCE BETWEEN BB'S AND TOP LIP OF MAGAZINE

NOTE: ALWAYS USE KWA ULTRA PREMIUM BB 0.2 ~ 0.25G. USING ONLY KWA'S ULTRA PREMIUM BB'S CAN GIVE THE AIR SPORTS GUN ITS BEST PERFORMANCE. USING IMPROPER AND LOW GRADE BB'S MAY DAMAGE THE GUN.

[3] LOADING MAGAZINE

- 1- PLACE MAGAZINE BACK INTO MAGAZINE WELL
- 2- PUSH UP MAGAZINE UNTIL IT CLICKS INTO LOCKED POSITION.
- 3- PULL MAGAZINE DOWN TO ASSURE THAT IT HAS BEEN LOCKED IN PLACE.

NOTE: OVERLOADING BB'S IN THE MAGAZINE MAY CAUSE JAMMING AND DAMAGE THE GUN WHEN LOADING. MAKE SURE TO CHECK FOR 3MM CLEARANCE BETWEEN FOLLOWER AND MAGAZINE LIP..

[4] **COCKING**

PULL SLIDE TO THE REARMOST POSITION AND RELEASE THE SLIDE. THIS WILL AUTOMATICALLY LOAD THE FIRST BB'S INTO THE CHAMBER. HAMMER WILL BE IN COCKED POSITION. MAKE SURE NOT TO SKIP THIS PROCEDURE. SKIPPING THIS WILL CAUSE A MISFIRE ON THE FIRST PULL OF THE TRIGGER.

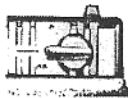
[5] **SELECTOR'S SWITCH**



SEMI AUTO POSITION



FULL AUTO POSITION



DISASSEMBLE POSITION

WARNING: IT IS RECOMMENDED TO WEAR EYE PROTECTION AT ALL TIMES. BB'S MAY BOUNCE OFF HARD SURFACES (RICOCHET). ALWAYS POINT GUN IN A SAFE DIRECTION.

[6] **SHOOTING**

RELEASE SAFETY AND PULL ON TRIGGER. THE BLOW BACK ACTION WILL LOAD THE FOLLOWING BB'S AUTOMATICALLY AS THE SLIDE CYCLES BACK AND FORTH.

CAUTION: ALWAYS WEAR EYE PROTECTION WHEN SHOOTING. BB'S MAY BOUNCE OFF OF HARD SURFACES. MAKE SURE YOUR SHOOTING DIRECTION IS CLEAR OF OBSTACLES BEFORE YOU SHOOT.

GRASP PISTOL IN YOUR HAND FIRMLY. A TWO HAND HOLD WITH ONE HAND WRAPPED AROUND THE OTHER WILL HELP IN CONTROLLING THE PISTOL.

WARNING: NEVER SHOOT GUN IN A HORIZONTAL OR UPSIDE DOWN POSITION.

[7] **OPEN SLIDE**

AFTER THE LAST SHOT HAS BEEN FIRED AND EJECTED, THE SLIDE WILL REMAIN OPENED. REMOVE MAGAZINE AND RELOAD MAGAZINE WITH BB'S. LOAD MAGAZINE INTO PISTOL AND RELEASE THE SLIDE STOP. SLIDE WILL LOAD THE FIRST BB INTO CHAMBER.

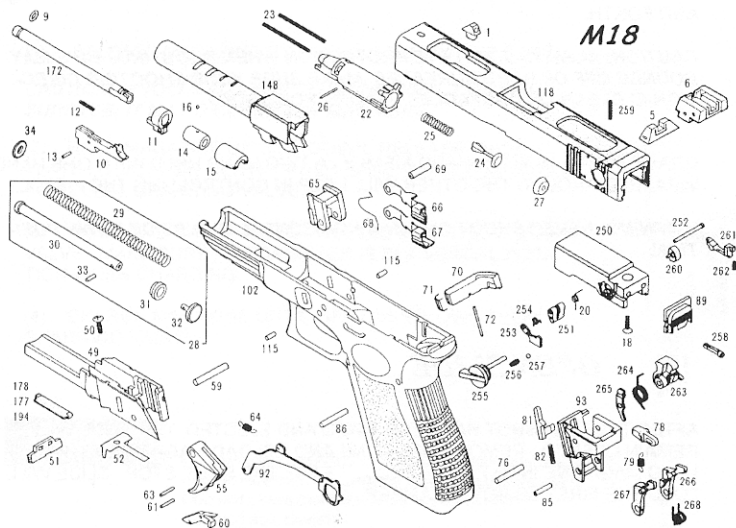
NOTE: IT IS IMPORTANT TO TREAT YOUR GUN AS THOUGH IT IS LOADED, EVEN IF THE SLIDE REMAINS OPEN.

[8] **AFTER SHOOTING**

REMOVE MAGAZINE FIRST AND VISUALLY INSPECT THE OPEN CHAMBER TO CHECK WHETHER THE MAGAZINE WELL AND CHAMBER ARE CLEAR OF BB'S.

M18C

Air Sports Gun



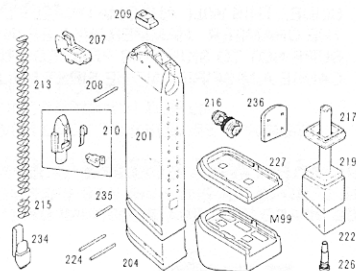
M18

M18C COMMON PARTS

1. FRONT SIGHT
5. REAR SIGHT "STANDARD"
6. ADJUSTABLE REAR SIGHT "NOT INCLUDED"
9. BARREL O-RING
10. INNER BARREL BASE
11. INNER BARREL SLEEVE
12. INNER BARREL SPRINGS
13. BASE PIN
14. CHAMBER
15. HOP UP HOOD
16. HOP UP BALL
18. GAS CHAMBER BLOCK SCREW
20. RESET BLOCK SPRINGS
22. GAS CHAMBER CYLINDER
23. CYLINDER SPRING X2

24. GAS CHAMBER PLUNGER
25. PLUNGER SPRINGS
26. PLUNGER PIN
27. GAS CHAMBER SEAL
28. RECOIL SPRING ASSEMBLY SPRINGS
29. SPRINGS
30. GUIDE ROD
31. GUIDE RING
32. GUIDE END CAP
33. END CAP PIN
34. RECOIL BUFFER
49. INNER FRAME BASE
50. BASE SCREW
51. SLIDE LOCK UP BLOCK
52. LOCK UP BLOCK SPRINGS
55. TRIGGER

59. TRIGGER PIN
60. TRIGGER SAFETY "NOT INCLUDED"
61. SAFETY PIN
63. TRANSFER BAR PIN
64. TRANSFER BAR SPRINGS
65. BARREL LOCK UP BASE
66. SLIDE STOP LEVER "STANDARD"
67. SLIDE STOP LEVER "EXTENDED"
68. SLIDE STOP SPRINGS
69. TRIGGER PIN SLEEVE
70. MAGAZINE RELEASE BUTTON "STANDARD"
71. MAGAZINE RELEASE BUTTON "EXTENDED"
72. MAGAZINE RELEASE SPRINGS
75. HAMMER SPRINGS
76. HAMMER PIN
78. IMPACT HAMMER BLOCK
79. BLOCK SPRINGS
80. SEAR PIN
81. DISCONNECTOR
82. DISCONNECTOR SPRINGS
84. SEAR SPRINGS
85. SEAR SPRINGS PIN
86. HAMMER ASSEMBLY HOUSING PIN
87. SEAR
88. GAS CHAMBER BLOCK
89. SLIDE BACK PLATE
92. TRIGGER TRANSFER BAR
93. HAMMER ASSEMBLY HOUSING
94. HAMMER
102. FRAME
115. TRIGGER
118. PORTED SLIDE
250. CHAMBER BLOCK "SELECTIVE FIRE"
251. HAMMER RESET BLOCK
252. RESET BLOCK PIN
253. SELECTOR LEVER HOOK
254. SELECTOR LEVER HOOK SPRINGS
255. SELECTOR LEVER
256. SELECTOR LEVER SPRINGS
257. SELECTOR LEVER BALL
258. LEVER ALIGNMENT PIN
259. SELECTOR SET SCREW
260. SELECTOR ELEVATOR
261. SELECTOR ELEVATOR BAR
262. ELEVATOR BAR SPRINGS
263. HAMMER
264. HAMMER SPRINGS
265. LEFT SEAR DISCONNECTOR
266. "RIGHT" SEAR
267. "LEFT" SEAR
268. SEAR SPRINGS
117. SLIDE "STANDARD"
194. SLIDE LOCK UP BLOCK SPRINGS
147. OUTER BARREL "STANDARD"
148. OUTER BARREL "PORTED"



MAGAZINE

201. MAGAZINE CASE
204. MAGAZINE BASE EXTENSION
207. MAGAZINE LIP
208. MAGAZINE LIP PIN
209. TOP NOZZLE SEAL
210. MAGAZINE FOLLOWER ASSEMBLY
213. MAGAZINE SPRINGS
215. MAGAZINE SPRINGS
216. MAIN VALVE
217. MAGAZINE BASE SEAL
219. MAGAZINE BASE BLOCK
222. MAGAZINE BASE BLOCK
224. MAGAZINE BASE PINS
226. CHARGING VALVE
227. MAGAZINE BASE PLATE
234. MAGAZINE PLATE LOCK
235. PLATE LOCK PIN
236. MAGAZINE BACK PLATE STOP

WARNING! READ ALL INSTRUCTIONS AND SAFETY RULES COMPLETELY BEFORE USING THIS AIR SPORTS GUN. REMEMBER, "SAFETY BEGINS WITH YOU."