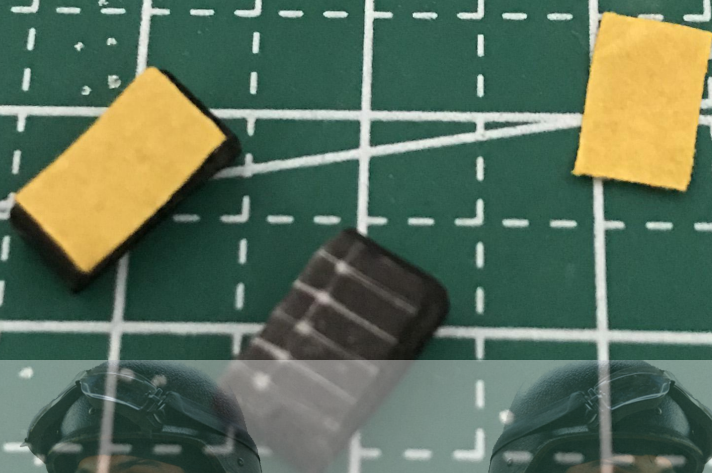


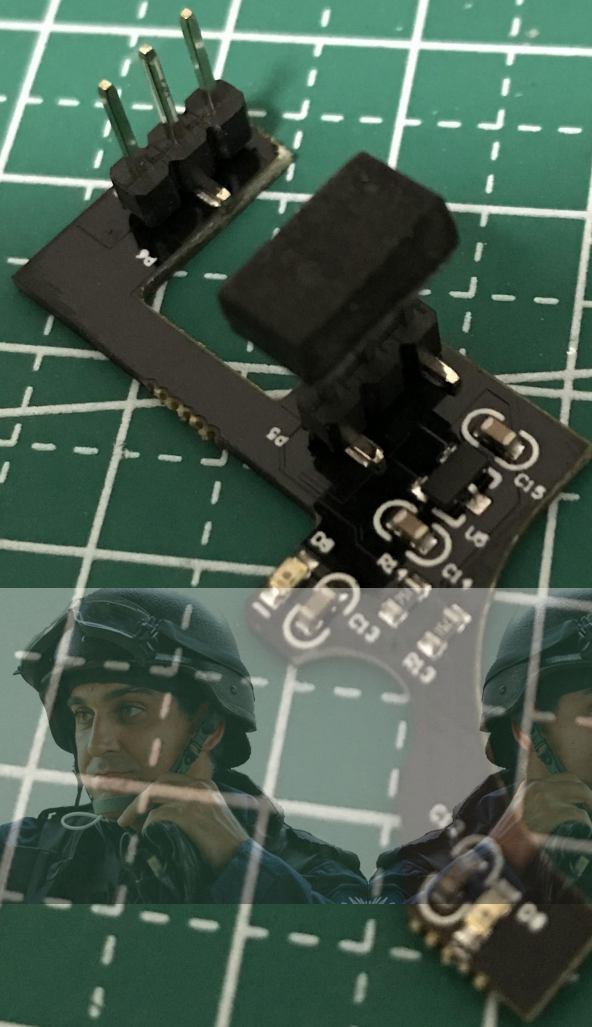
开始之前在零件包里找到这两个海绵垫，揭掉背部黄纸漏出背胶



Before the start, find these two rubber pads with back glue in the attached parts

背胶朝下贴到排针上面

Paste it on the top of the pins



按下去让排针穿过它

Press the pad down and let the pins go through it



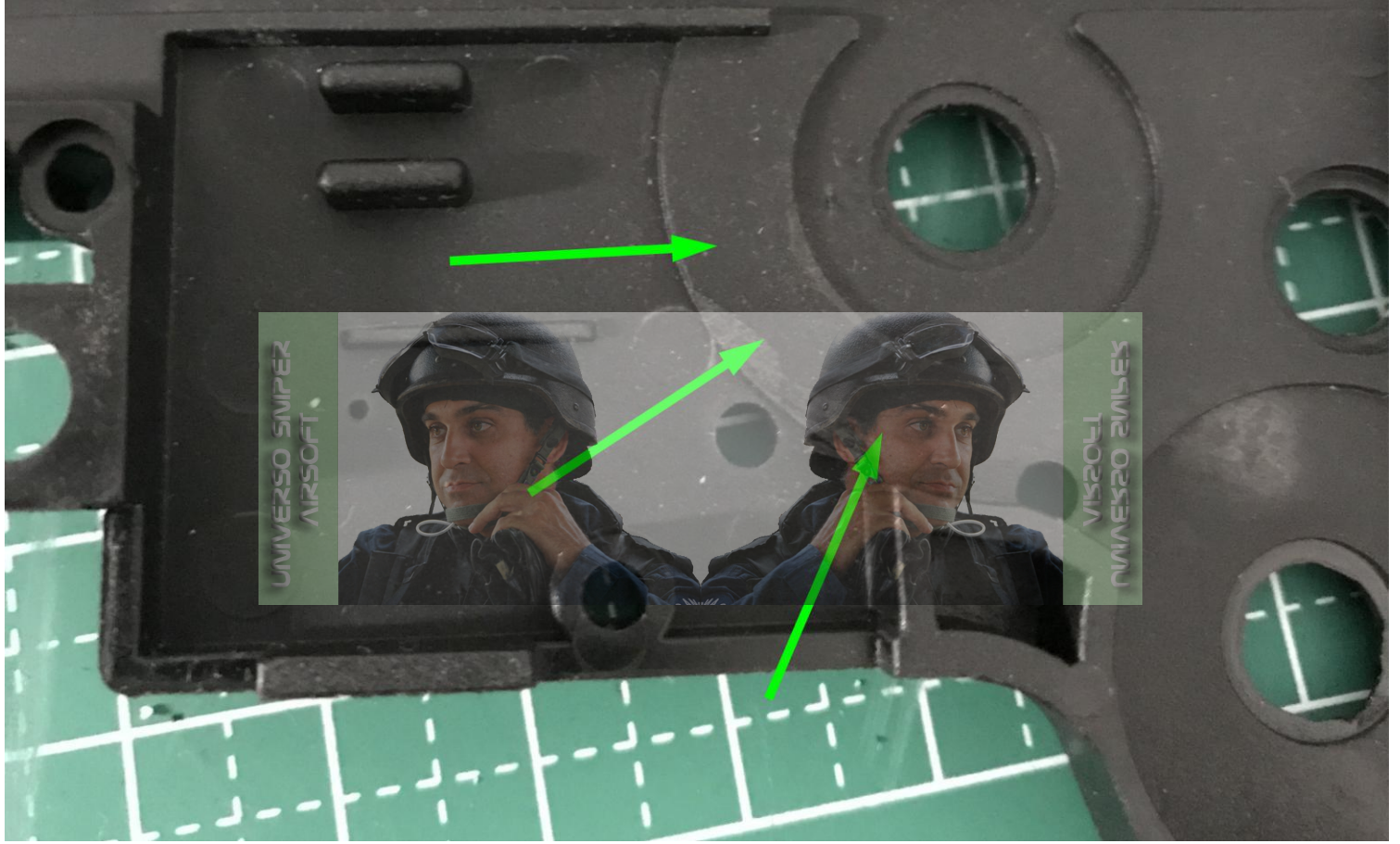
用同样的方法做另一个海绵垫

Do another pad the same way

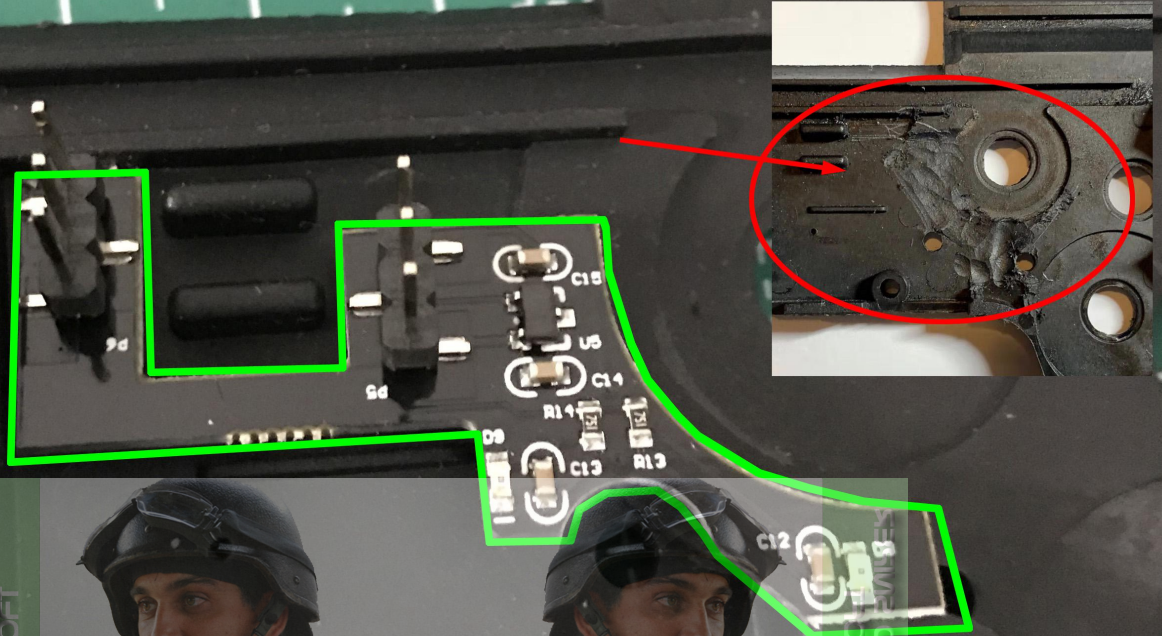


如果你的波箱另一面有加厚层，需要进行打磨

If you have a thickening layer on the other side of the gearbox, you need to cut it down



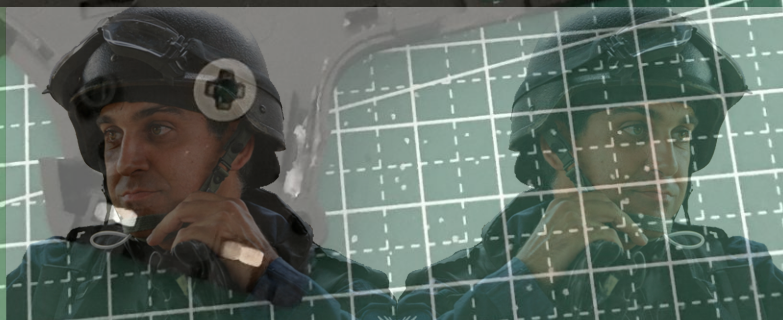
放下顶板进行测量，绿圈底部的凸起全部需要磨平



Use the top plate to measure the position to be polished, and the convex structure position in the green circle needs to be completely removed

拆解波箱，留下跷跷板用于测量单发位置

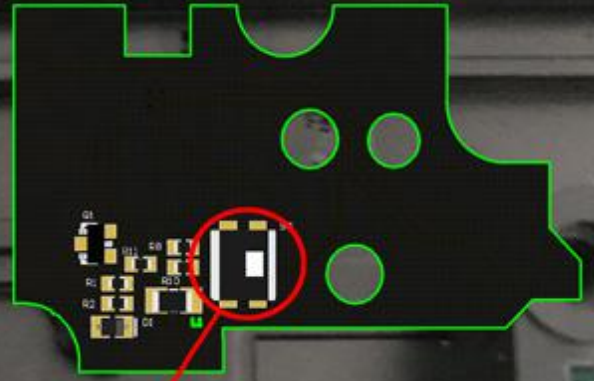
Disassemble the gearbox and leave the cut-off lever to measure the semi-auto position



使跷跷板处于水平位置
向左滑动导电片顶住跷
跷板，此时导电片位置
为单发位置

快慢机传感器位置应该在此处附近
探测距离为0.5-1毫米

Selector sensor should be here
The detective range of the sensor is 0.5-1mm

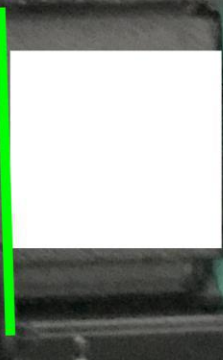


Make the cut-off lever in
the horizon position, slide
the selector plate to the left
against the lever, which is
the semi-auto position.



绿色线的右侧需要贴上白色
贴纸，左侧需要保留黑色

The right side of the green line needs
to be pasted with a white sticker,
and the left side needs to be kept in black



贴上白色附带的白色贴纸，
绿线左侧涂成黑色

Stick on the attached white sticker
and black the left side of the green
line

白纸的平面需要保证距离传感器0.5-1mm之间如果你的快慢机传感器检测不到白纸，需要增加白纸厚度

The plane of the white paper should be within the range of 0.5-1 mm of the sensor. If your selector sensor cannot detect the white paper, you need to change the thickness of the white paper.



开始安装电路板，先将底板放入波箱，对准螺丝孔，如果不能顺利放入，请进行相应的兼容性修改

Start to install the circuit board, first put the bottom board into the gearbox, align with the screw hole, if not, please make the corresponding compatibility modification

找出硅胶垫片，
放置在此位置

Find the soft pad, put it in the
position below





确保电路板不倾斜，
拧紧螺丝

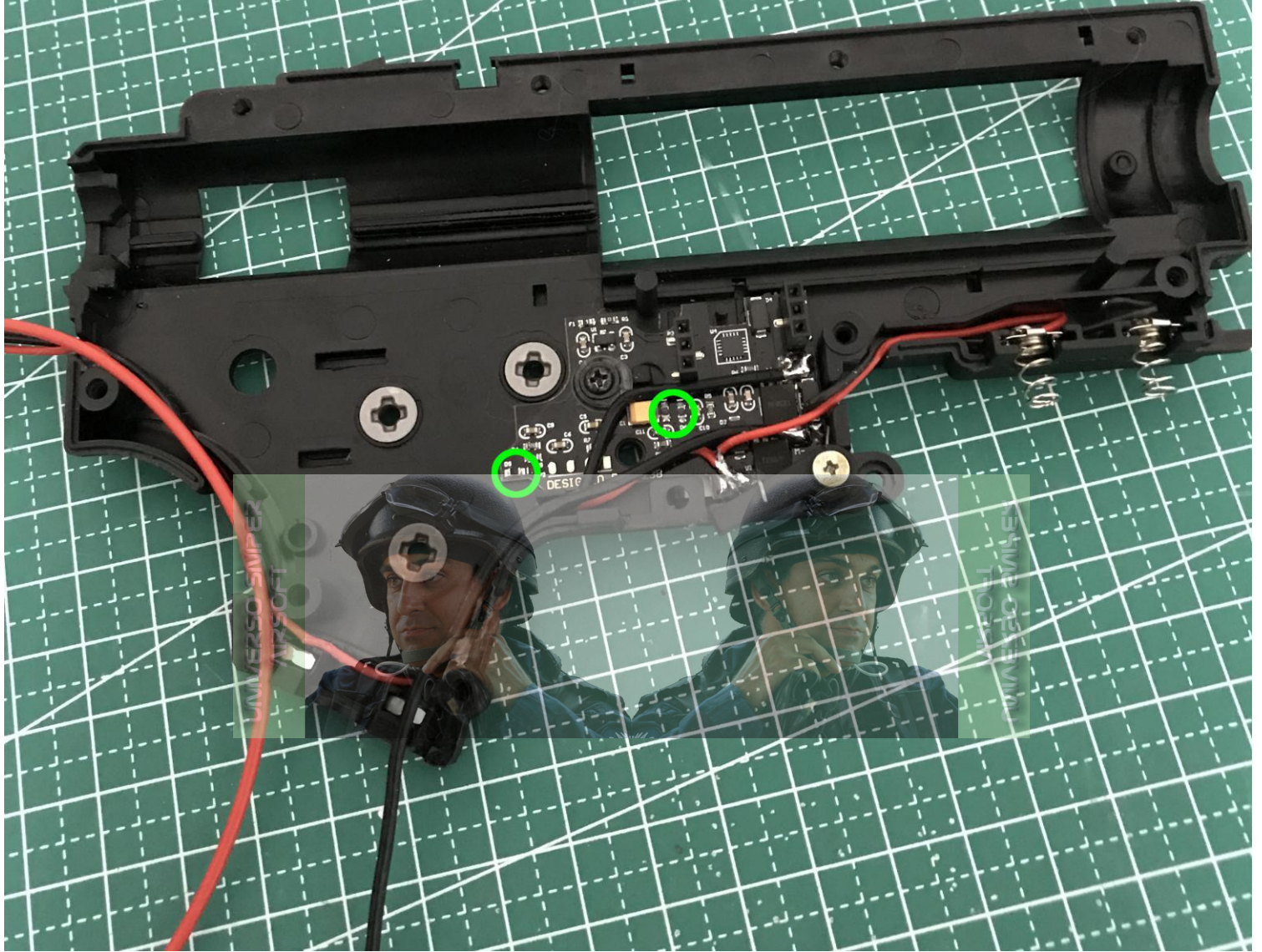


UNIVERSO SIMPER
AIRSOFT

UNIVERSO SIMPER
AIRSOFT

Make sure the circuit board
does not tilt, tighten the
screw

布置好电线， 勿遮挡传感器
Lay out the wires,
do not block the sensors



把其他零件装回原位，确保扳机有足够大的旋转角度，否则需要修改绿圈内的部位

Put other parts back to their original positions to ensure that the trigger has enough rotation angle, otherwise the parts in the green circle need to be modified



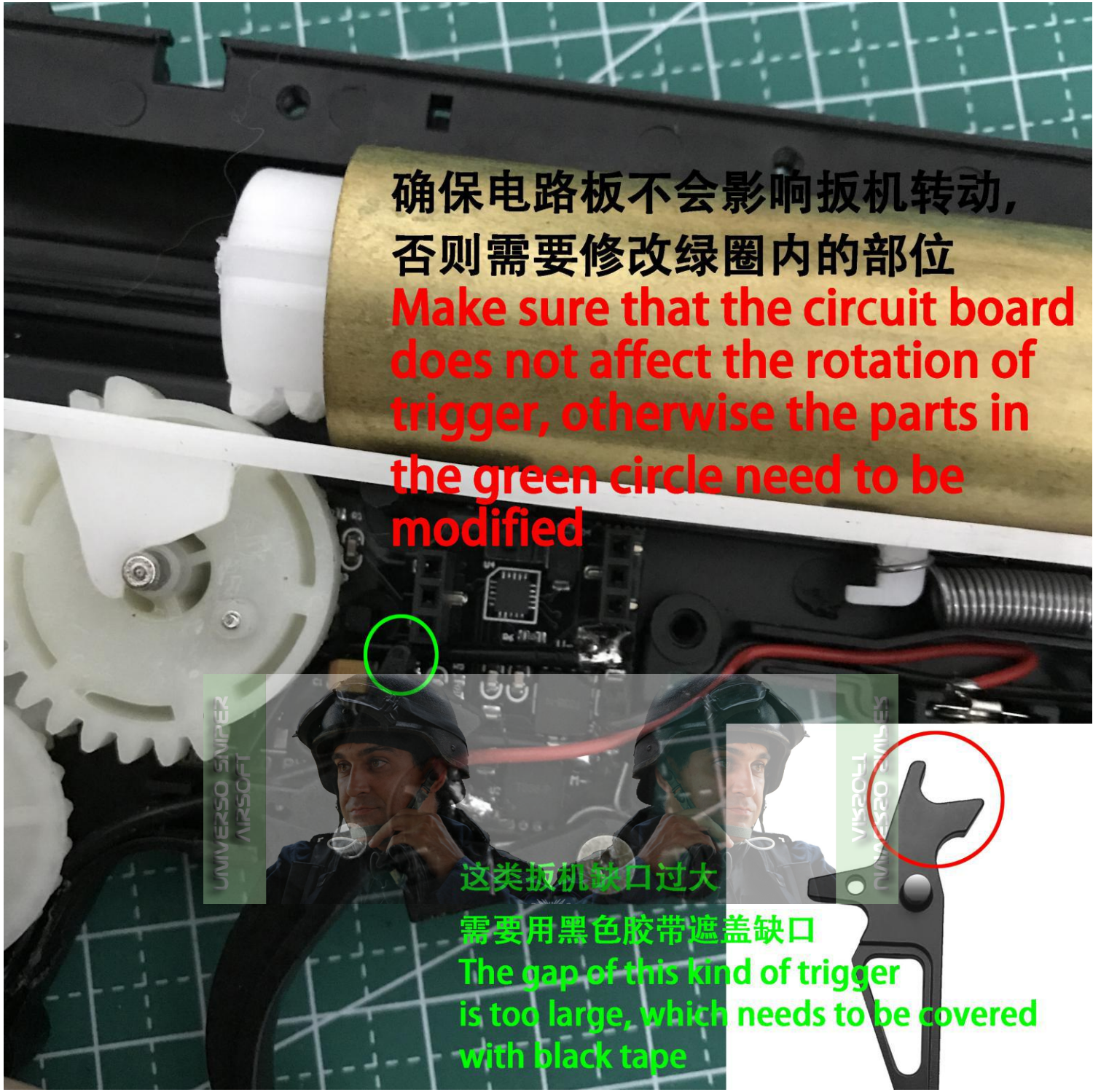
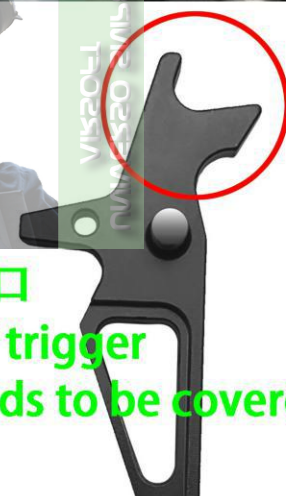
确保电路板不会影响扳机转动，
否则需要修改绿圈内的部位

Make sure that the circuit board
does not affect the rotation of
trigger, otherwise the parts in
the green circle need to be
modified

UNIVERSO SMIPER
AIRSOFT

UNIVERSO SMIPER
AIRSOFT

这类扳机缺口过大
需要用黑色胶带遮盖缺口
The gap of this kind of trigger
is too large, which needs to be covered
with black tape



对准后轻轻插入火控顶板，
无需用力压到底

T238[®]
LIGHT SENSOR
VERSION

T238 DIGITAL TRIGGER UNIT V1.5

After alignment, insert the DTU
top board gently, without pressing
to the bottom

UNIVERSO SIMPER
AIRSOFT

UNIVERSO SIMPER
AIRSOFT

注意不要使这两个海绵垫挤压变形



Take care not to squeeze the two rubber pads out of shape

UNIVERSO SIMPER
AIRSOFT

UNIVERSO SIMPER
AIRSOFT

合上波箱，拧紧所有螺丝

Close the gearbox and tighten all screws

