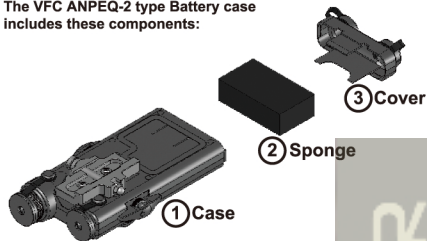




VFC ANPEQ-2 TYPE Battery Case Instruction Manual

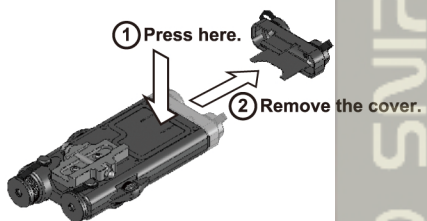
The VFC ANPEQ-2 type Battery case includes these components:



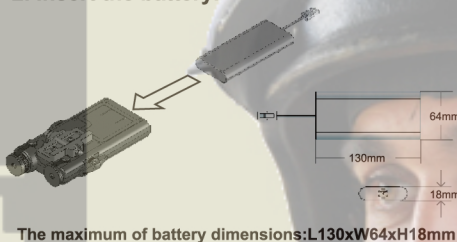
FEATURES

Realistic as Real.
High class industrial plastic material.
Support Hi-capacity battery.
Used on any airsoft gun with a rail system and front mounted battery adapter.

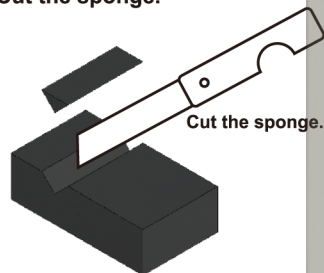
1. Open the battery box.



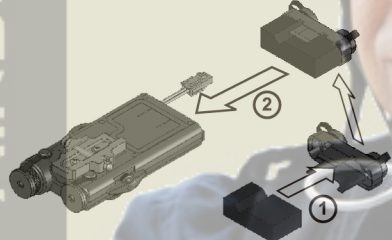
2. Insert the battery.



3. Cut the sponge.



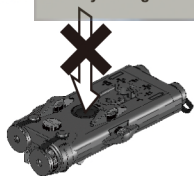
4. Assemble the cover and sponge.



5. Setup complete.



Warning:
Pressing this dummy switch too much may damage it.



Completion

<http://www.gb-tech.com.tw>

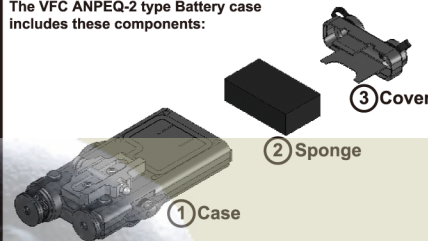
Caution: THIS IS NOT A REAL LASER POINTER.

Warning: This product is designed for airsoft sports, static display, movie or stage use. Unable to modify.



VFC ANPEQ-2 TYPE Battery Case Instruction Manual

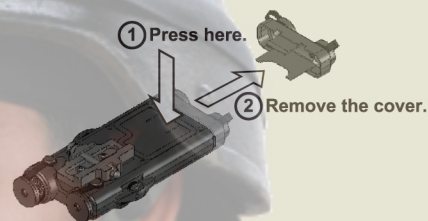
The VFC ANPEQ-2 type Battery case includes these components:



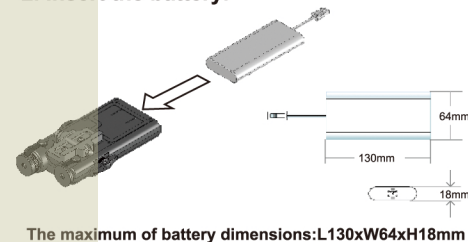
FEATURES

Realistic as Real.
High class industrial plastic material.
Support Hi-capacity battery.
Used on any airsoft gun with a rail system and front mounted battery adapter.

1. Open the battery box.



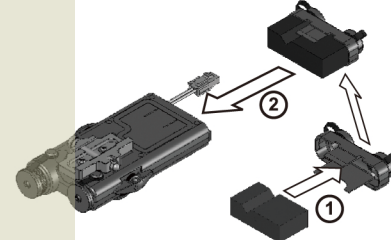
2. Insert the battery.



3. Cut the sponge.



4. Assemble the cover and sponge.



5. Setup complete.



Warning:
Pressing this dummy switch too much may damage it.



Completion

<http://www.gb-tech.com.tw>

Caution: THIS IS NOT A REAL LASER POINTER.

Warning: This product is designed for airsoft sports, static display, movie or stage use. Unable to modify.