

MK13 MOD 0 MOUNTED ON MK16

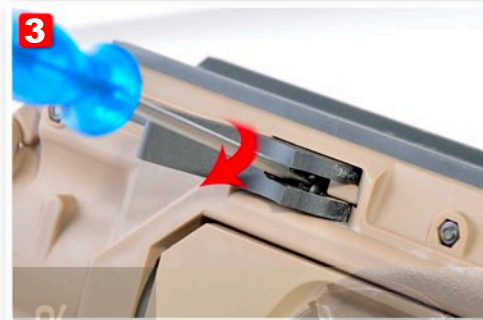
1 鬆開快拆裝置，如發現軌道固定卡榫露出。



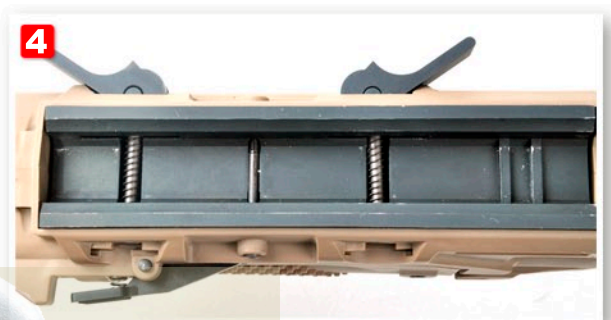
2 快拆裝置內有一字小螺絲。



3 順時針調整快拆裝置內的小螺絲。



4 直到軌道固定卡榫不露出快拆夾座。



5 將SCAR插上彈匣



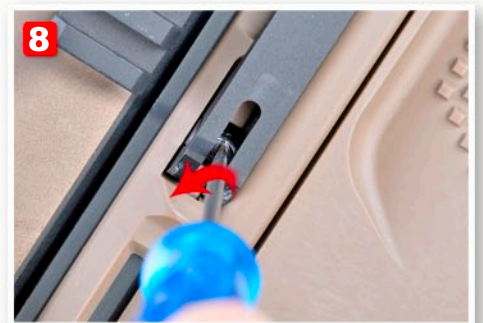
6 將EGLM發射模組板機, 透過彈匣裝上SCAR下軌道, 左右搖晃榴彈發射器以確定固定夾座與軌道確實密合, 注意板機組與SCAR護弓間隙必須密合。
注意：裝設EGLM時必須要將EGLM平行裝上SCAR下軌道。



7 將快拆模組扳至定位。如裝置正確可輕鬆將快拆模組扳至定位, 如無法將快拆模組扳至定位請回到上一步驟重新組裝。切勿用力將其扳至定位以免造成軌道固定卡榫損傷。



8 如EGLM會晃動, 請將快拆裝置內小螺絲旋緊。



9 完成。



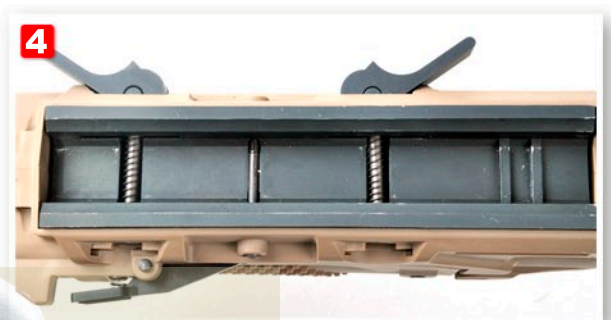
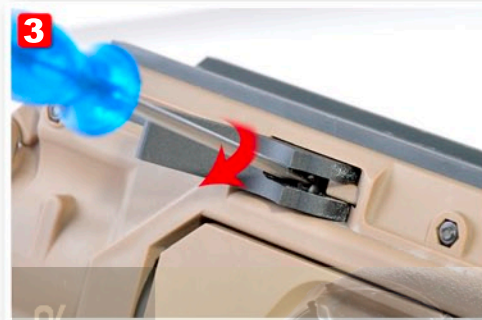
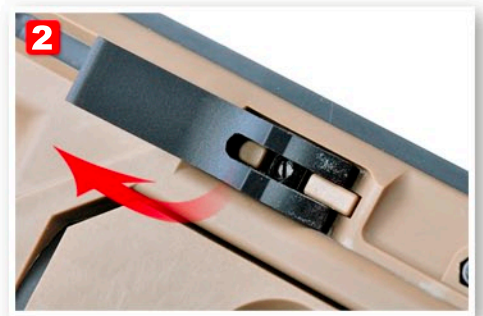
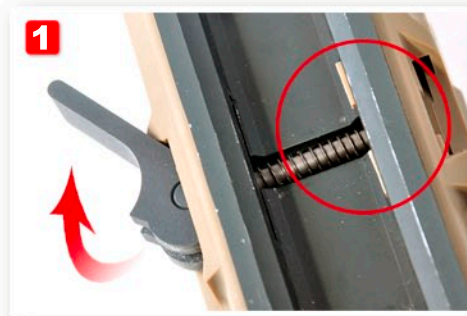
附註：

假如您的SCAR有拆卸過槍管，建議先放鬆SCAR L上固定槍管組的六根螺絲。在裝設EGLM時要將EGLM平行裝上SCAR下軌道，然後調整好槍管組位置，再把槍管固定螺絲鎖緊。



MK13 MOD 0 MOUNTED ON MK16

- 1 Loosen the Jaw levers, if you detect the tenon emerge from the slideway.
- 2 There have a screw in the Jaw Levers.
- 3 Adjustment the screw to clockwise.
- 4 Until the tenon not emerge from the slideway.

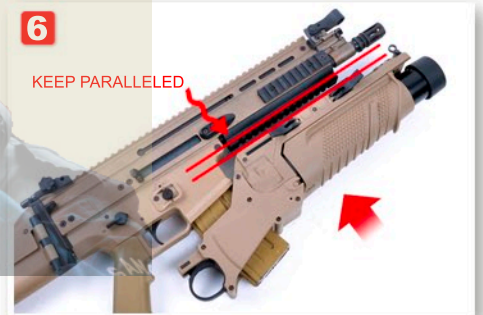


- 5 Setting the magazine.

- 6 MK16/17 launcher Mount combines with SCAR's 6 O'clock M1913 STD rail.

ATTENTION: EGLM must paralleled SCAR's 6 O'clock M1913 STD rail

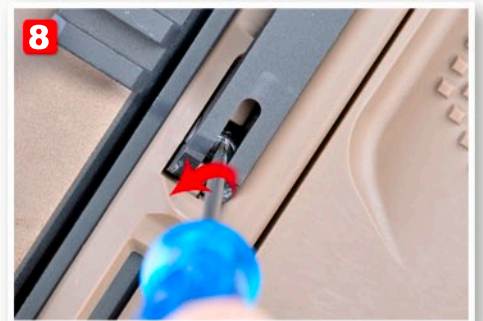
Sway the launcher; make sure the rail close fitting. The trigger module need very close with Trigger guard.



- 7 Lock on Jaw levers. If you can easily lock on Jaw levers, that is correct. If not, please go back the step to reset the reset the launcher. Do not force to lock the Jaw levers for fear the tenon broken.



- 8 Please, adjustment the screw, if the EGLM loose.



- 9 If you want take apart the EGLM. Please, loosen the screw.



9

NOTE:

If your SCAR has changed the barrel. Please, use the star screw driver to loose the 6 screw on the up receiver. EGLM must paralleled SCAR's 6 O'clock M1913 STD rail, when you set the EGLM on the SCAR. Locking the 6 screw on the up receiver after adjustment the barrel set's position.



VegaForce Company

<http://www.gb-tech.com.tw>