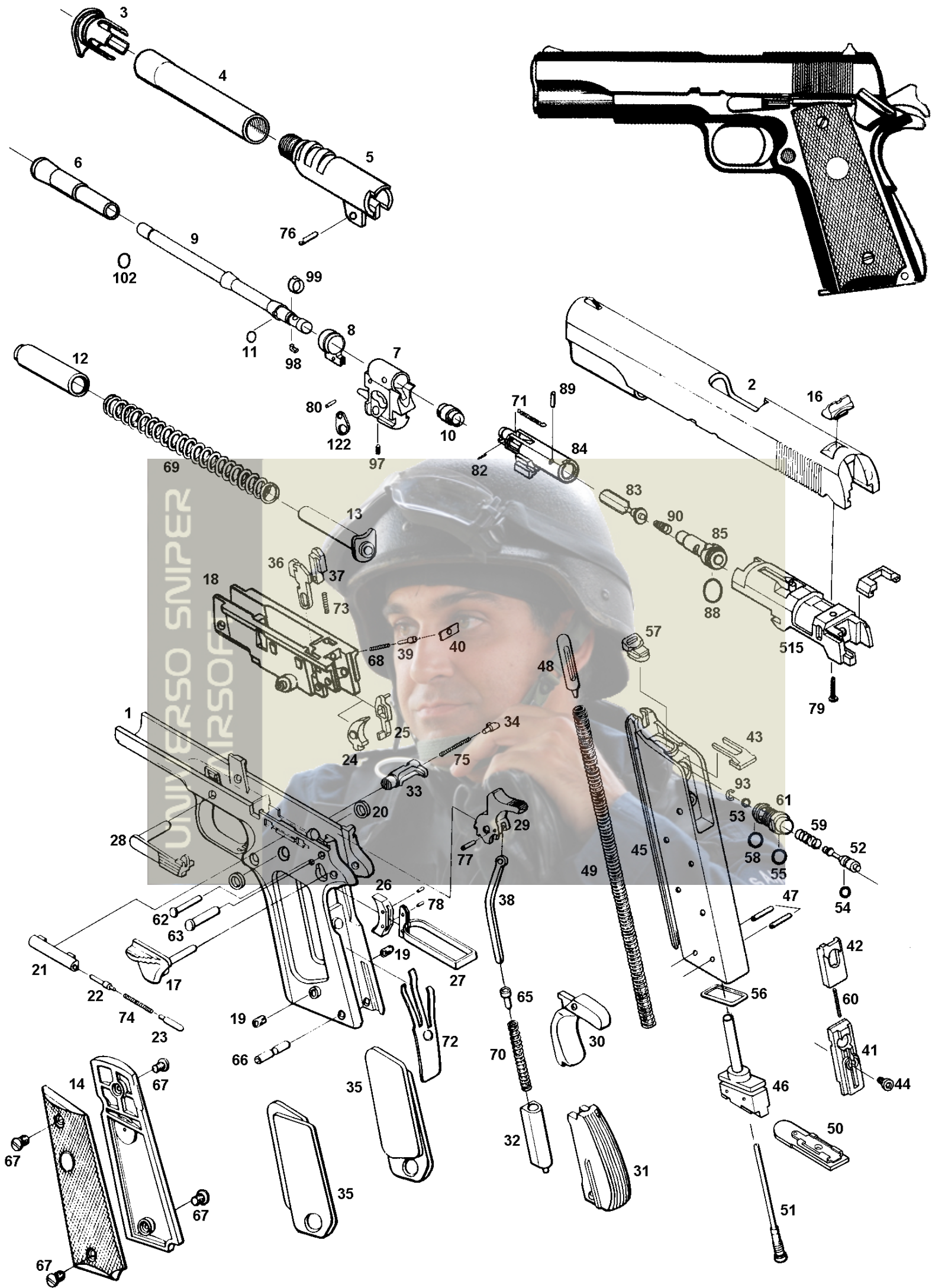


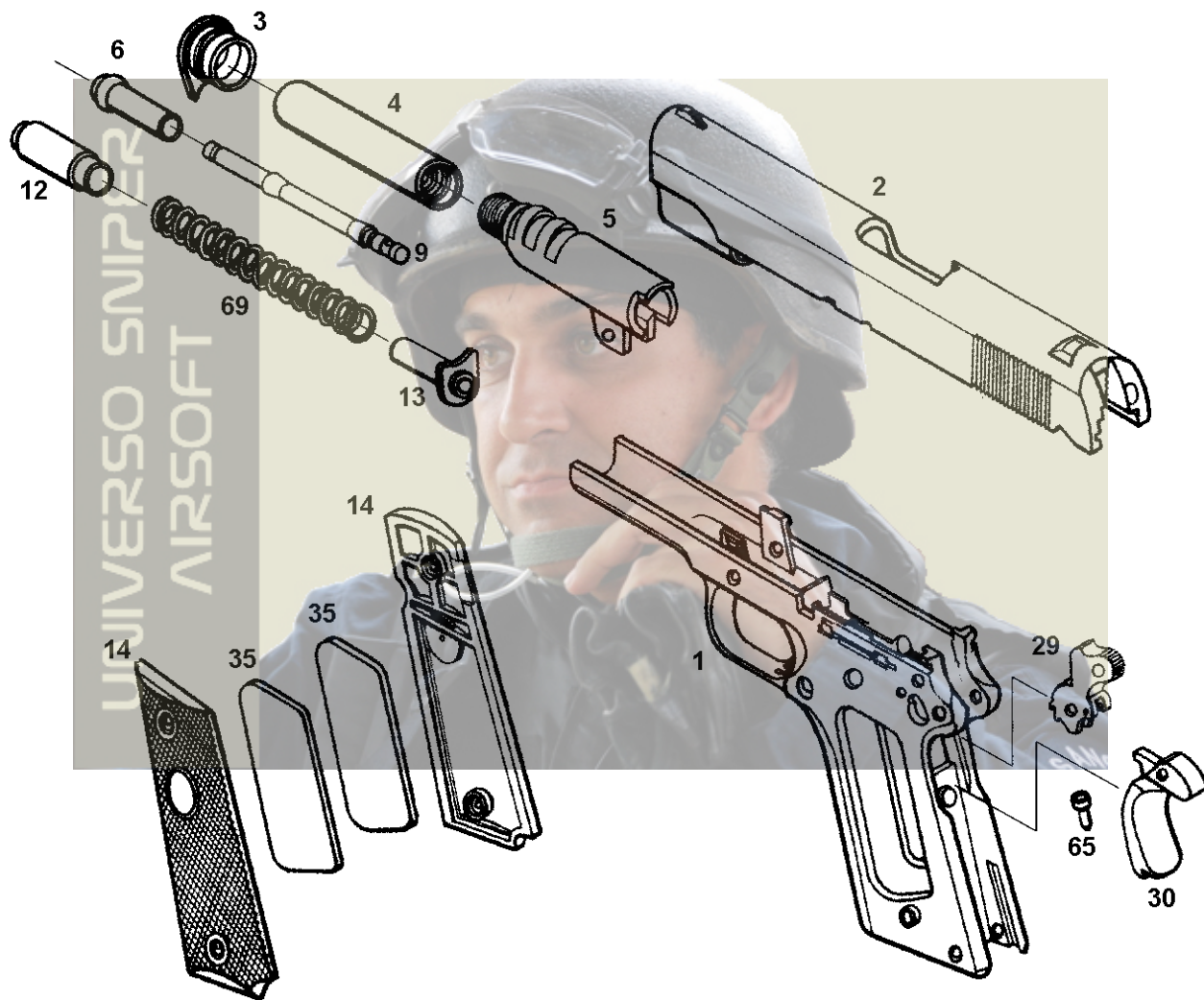
PARTS LIST FOR COLT GOVERNMENT SERISE



No.	parts No.	parts name	price(¥)	No.	parts No.	parts name	price(¥)
N1	8601	70 frame HW	4,000	33	8033	70 magazine catch	500
P1	8701	ML frame	4,000	M33	8233	ML magazine catch PK	500
N 2	8602	70 slide HW	3,800	34	3034	70 magazine catch lock	200
P2	8702	ML slide HW	3,800	M34	3234	ML magazine catch lock PK	200
3	8003	70 barrel busing	500	35	GNB-035	Grip weight (L/R set)	800
M3	8203	ML barrel busing PK	500	36	SVA-036	Valve lock release	200
4	8004	70 outer barrel	1,500	37	3037	Disconnect guide B	300
M4	8204	ML outer barrel PK	1,500	38	8038	Hammer strut	200
N5	3005N	70 HC chamber cover	800	40	8040	Firing pin stopper	200
P5	3005P	HC chamber cover PK	800	43	8643	Gas route guide	300
6	8005	Barrel weight	500	44	8044	valve guide screw	100
7	3007	New inner barrel guide	800	45	8645	70 impact magazine case	2,000
8	SVA-008	New barrel lock	400	P45	8745	ML impact magazine case PK	2,000
9	3009	LTD plunger barrel	2,200	46	8646	Magazine base joint	500
10	8210	Normal chamber	700	47	8647	Base pin x2	100x2
11	STD-024	8x6x1	100	48	8048H	Magazine follower 15rd	300
12	8012	70 plug black	1,000	49	8049H	Magazine spring 15rd	200
M12	8212	ML plug PK	1,000	50	8650	70 magazine base plate	500
13	8013	Recoil spring guide	400	P50	8750	ML magazine base plate PK	500
14	8014	70 grip (L/R set)	800	51	8051	Charging valve	700
M14	8214	ML grip (L/R set)	800	52	8652	Impact valve	800
514	3514	Breech spacer	200	53	STD-001	S-3	100
15	WLG-015	GM breech	1,100	54	STD-021	5x3x1	100
16	8016	70 rear sight	500	55	STD-026	10x8x1	100
M16	8216	ML rear sight PK	500	56	8056	Magazine base packing	200
17	8017	70 safety lever	700	57	SVA-057	Gas route packing	200
M17	8217	ML safety lever PK	700	58	STD-006	S-7	100
18	8018	Chassis	2,500	59	8659	Impact spring	200
19	8019	grip screw nut x 2 pcs	100	60	8460	WL valve lock spring	100
20	8020	grip screw sleeve x 2 pcs	100	61	8661	Impact sleeve	800
21	8021	70 plunger guide black	300	62	8062	70 sear pin black	100
M21	8221	ML plunger guide PK	300	M62	8262	ML sear pin PK	100
22	8022	slide stop plunger	200	63	8063	70 hammer pin black	140
23	8023	safety plunger	200	M63	8263	ML hammer pin silver	140
24	3024	Sear	300	65	8065	Main spring cap	200
25	3025	disconnect bar	300	66	8066	70 main spring housing pin	140
26	8026	70 trigger	400	M66	8266	ML main spring housing pin PK	140
M26	8226	ML trigger PK	400	67	8067	70 grip screw x2	200
27	8027	Trigger bar	400	M67	8267	ML grip screw x2	200
28	8028	70 slide stop	700	68	8068	Firing pin spring	200
M28	8228	ML slide stop	700	69	8069	Recoil spring	400
29	8029	70 hammer	800	70	8070	Main spring	300
M29	8229	ML hammer PK	800	71	SVA-071	Loading nozzle spring	200
30	8030	70 grip safety	800	72	8072	Sear spring	500
M30	8230	ML grip safety PK	800	73	8073	Disconnecting guide spring	100
31	8031	70 main spring housing	800	74	8074	Plunger spring	100
M31	8231	ML main spring housing PK	800	75	8075	Magazine catch spring	100
32	8032	retainer	400	76	8476	WL link pin	100

No.	parts No.	parts name	price(¥)	No.	parts No.	parts name	price(¥)
77	STD-143	Hammer strut pin 2x6)	40	91	8091	busing wrench	200
78	STD-122	Trigger pin (1.5 x 5)	100	-	8691	Impact wrench (extra)	300
79	STD-426	Rear sight screw M3x18	100	92	8692	Wrench set	100
80	STD-122	Barrel lock pin (1.5 x 5)	100	-	STD-586	wrench 3mm	100
82	STD-103	Nozzle spring pin (1x 6)	40	93	8693	Impact E-ring (E2.5)	100
83	SVK-083	Floating valve	400	97	STD-221	adjust screw M3 x 4	100
84	SVC-084	Loading nozzle	1,300	98	8098	lower plunger	200
85	GMA-085	GM floating valve guide	700	99	9291	hop up rubber	200
88	STD-011	S-11.2	100	102	STD-023	7x5x1	100
89	STD-144	Floating valve guide pin 2x7	100	122	3122	LTD barrel link	300
90	8090	floating valve spring	300	109	3109	plug packing	200

PARTS LIST FOR COLT COMBAT COMANDER SERISE



No.	parts No.	parts name	price(¥)	No.	parts No.	parts name	price(¥)
C1W	8601C	CC frame HW	3,900	C13	8013C	CC recoil spring guide	400
C2W	8602C	CC slide HW	3,700	C14	8014C	CC grip (L/R set)	800
C3	8003C	CC barrel bushing	500	C29	8029C	CC ring hammer	800
C4	8004C	CC outer barrel	1,400	30	8030C	CC grip safety	800
C5	3005	CCHC chamber cover	800	C35	8035C	CC grip weight (L/R set)	600
C6	8006C	CC barrel weight	500	C65	8665C	CC main spring cap	200
C9P	8709C	CC new plunger barrel	2,200	C69	8069C	CC recoil spring	400
C12	8012C	CC plug	900				