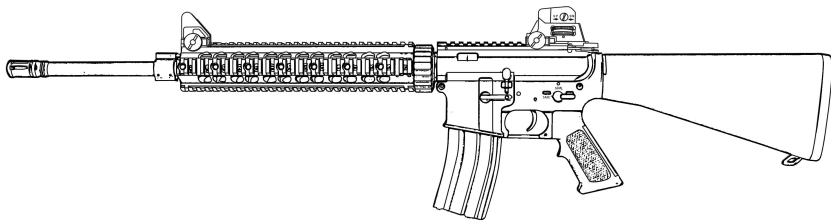
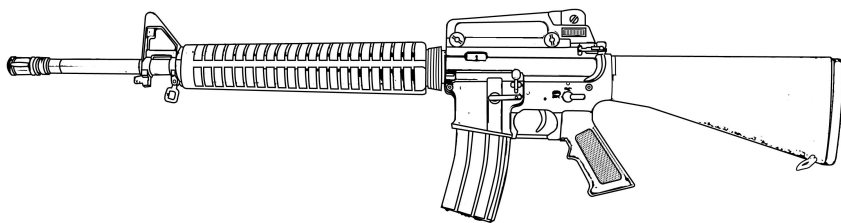


UNIVERSO SNIPER
AIRSOFT



KWA®

OPERATOR'S MANUAL



KM16BR KM16 SR12

TABLE OF CONTENTS

Use of this manual2

Safety Guidelines 2-3

Warranty and Service 4-5

Specifications 6-7

Contents8

Break-in Period.....8

Loading.....9

Fire Selector Switch10

Battery Installation 11

Hop-Up System12

Front and Rear Sight Adjustment13

Disassembly and Assembly Procedures14

Cleaning and Lubrication.....15

Troubleshooting16

Operating Under Unusual Conditions.....17

Diagrams and Parts Lists 18-25

USE OF THIS MANUAL

Before operating the Airsoft gun, read this manual in its entirety. Important safety topics and tips are discussed throughout all of the chapters. It's important that the operator know the principles of gun handling safety and operation prior to firing the Airsoft gun.

SAFETY GUIDELINES



WARNING! Failure to follow safety guidelines may result in serious injury.

Safety Distance

The effective shooting range is approximately 175 feet. BBs fired from this Airsoft gun may travel further than intended. Make certain that you have an adequate backstop.

Eye Protection

Eye protection should be worn at all times when both shooting and maintaining your Airsoft gun. Protect your eyes from BBs under spring pressure while performing maintenance on your Airsoft gun.

Assume Every Gun is Always Loaded

Until you are certain the chamber is empty, treat every gun as if it were loaded. Do not assume the chamber is empty based on your memory or someone else's words. Always remove the magazine and visually check to confirm the chamber is empty.

Beware of Barrel Obstructions

Ensure the Airsoft gun barrel is free of obstructions before you fire the gun. Even the smallest obstruction such as dirt, dust or a stuck cleaning patch can cause a jam, misfire or malfunction.

Muzzle Control

Always keep the muzzle of the gun pointed in a safe direction. Never point the muzzle at a person or object that you do not intend to shoot.

Keep Your Safety On

Keep the gun's safety on until your sights are aligned on your target and you are ready to fire.

Keep Your Finger Off The Trigger

Keep your finger off the trigger and out of the trigger guard until your sights are aligned on your target and you are ready to fire.



WARNING! Airsoft BBs can be a choking hazard. Keep them away from children.

SAFETY GUIDELINES

Identify Your Target and Backstop

Before you pull the trigger, make certain of your target and what is beyond it. The Airsoft gun should never be fired at surfaces such as rocks, glass, water, or other hard surfaces where BBs are likely to ricochet in unpredictable directions.



WARNING! Adult supervision is required for any person under the age of 18.

Failure To Fire

If the Airsoft gun fails to fire, misfires, or malfunctions, do not look into the gun barrel. BBs can become lodged into the chamber, and serious eye injury may occur.

Maintain Your Gun Properly

Performing proper maintenance, as outlined in this manual, ensures that your Airsoft gun will be safe to shoot and will perform to its designed specifications for many years. Alterations, modifications or adjustments may damage your Airsoft gun, make it unsafe to shoot, and will void all warranty claims.

Store Your Gun Safely

Always store the Airsoft gun in a safe place, and out of the reach of children. Always transport the Airsoft gun in a carrying case. Never display the Airsoft gun in a public place. Keep the safety engaged, and remove the magazine before storing the Airsoft gun.

NOTE: IT IS YOUR RESPONSIBILITY TO TAKE EVERY REASONABLE PRECAUTION TO ENSURE THE SAFE STORAGE AND TRANSPORTATION OF YOUR AIRSOFT GUN.

Orange Tip

The orange tip on Airsoft guns helps Law Enforcement distinguish between the replica guns from their real firearm counterparts. Altering the coloration or markings required by state or Federal law so as to make the product look more like a firearm is dangerous and may be a crime. Operator assumes all risks and responsibility when doing so.

Hazards of Being Mistaken for a Real Firearm

Airsoft guns have been mistaken by Police and Law Enforcement as real firearms. A confrontation with law enforcement while carrying an Airsoft gun can result in serious injury or even death. It is strongly advised to operate the Airsoft gun at a safe and legal location. In the event that you are approached by Law Enforcement personnel, you must comply with their instructions immediately to avoid an incident.

Alcohol, Medications and Drugs

Do not handle or operate your Airsoft gun while under the influence of alcohol, medication or drugs.

Your Responsibility

Your Airsoft gun is well-engineered and manufactured to the highest standards. It was carefully inspected before it was packaged and shipped from our factory. Its safe use depends on you alone. You are the ultimate safety device. Like many other devices, your Airsoft gun is safe unless handled in an irresponsible or uneducated manner.

WARRANTY AND SERVICE

KWA Performance Industries, Inc. is committed to serve our customers with the finest quality products, the highest level of service, and customer satisfaction. Because of this, we offer a 45-day warranty on all KWA products we import and distribute.

What is Covered

Except as specified below, this warranty covers all defects in material and workmanship in KWA products occurring during the above warranty periods. The following are not covered by the warranty: (1) Any product which is not imported and distributed in the U.S.A. by KWA PERFORMANCE INDUSTRIES, INC. (2) Any products not purchased in the U.S.A. from an KWA AUTHORIZED RESELLER (Note: KWA AUTHORIZED RESELLER can be identified by KWA AUTHORIZED RESELLER sticker displayed in the store. If you are uncertain as to whether a dealer is a KWA AUTHORIZED RESELLER, please contact KWA PERFORMANCE INDUSTRIES, INC. as listed above). (3) Damaged deterioration or malfunction resulting from: a) Accident, act of nature, abuse, misuse, neglect, unauthorized product repair, opening of or modification or failure to follow instructions supplied with the product. b) Repair or attempted repair by anyone not authorized by KWA PERFORMANCE INDUSTRIES, INC. c) Removal of the orange safety tip. (4) Use of the product outside the U.S.A. (5) Damaged batteries or improper use of bullets (BBs), or non approved propellants (ie. Propane, Red Gas, 134a...etc.) (6) Use in industrial, commercial, and/or professional applications.

What KWA Will Pay For

If during the applicable warranty period from the date of the original purchase your KWA product is found to be defective by KWA Performance Industries, Inc., KWA Performance Industries, Inc. will repair, or at its option, replace with new, used, or equivalent model, the defective product without charge for parts or labor.

How To Obtain Warranty Service

If your product needs service, it may be taken or shipped to KWA Performance Industries, Inc. The following procedures apply whenever your unit must be transported for warranty service:

- You must go to Help Desk at www.kwausa.com/support to obtain an RMA number. THE RMA NUMBER MUST BE CLEARLY MARKED ON THE OUTSIDE OF THE PACKAGE. PACKAGES WITHOUT AN RMA NUMBER CLEARLY MARKED WILL BE REFUSED AND RETURNED TO THE SENDER.
- You are responsible for transporting your unit or arranging for its transportation.
- If shipment of your unit is required; you must pay the initial shipping fee, but we will pay the return shipping charge if the repairs are covered by the warranty.
- WHEN RETURNING YOUR UNIT FOR WARRANTY SERVICE, A COPY OF THE ORIGINAL SALES RECEIPT MUST BE ATTACHED.
- You must include the following: RMA number, your name, address, daytime telephone number, model and serial number (if applicable) of the product and a description of the problem.

NOTE: THE RMA NUMBER MUST BE CLEARLY MARKED ON THE OUTSIDE OF THE PACKAGE. PACKAGES WITHOUT AN RMA NUMBER CLEARLY MARKED WILL BE REFUSED AND RETURNED TO SENDER. NO EXCEPTIONS.

This Warranty is Only Valid in the United States

If your product does not require service, but you have questions regarding its operation, please contact our Technical Services Department as listed below.

THIS WARRANTY IS EXPRESSLY MADE IN LIEU OF ALL OTHER WARRANTIES, EXPRESSED OR IMPLIED, INCLUDING WITHOUT LIMITATION, WARRANTIES OF MERCHANTABILITY AND FITNESS FOR A PARTICULAR PURPOSE.

OUR LIABILITY IS LIMITED TO THE REPAIR OR REPLACEMENT, AT OUR OPTION, OF ANY DEFECTIVE PRODUCT AND SHALL IN NO EVENT INCLUDE INCIDENTAL OR CONSEQUENTIAL COMMERCIAL OR PROPERTY DAMAGES OF ANY KIND. WE ARE NOT RESPONSIBLE FOR PRODUCTS LOST, STOLEN AND/OR DAMAGED DURING SHIPPING.

SOME STATES DO NOT ALLOW LIMITATIONS ON HOW LONG AND IMPLIED WARRANTY LASTS AND/OR DO NOT ALLOW THE EXCLUSION OF INCIDENTAL OR CONSEQUENTIAL DAMAGES, THE ABOVE LIMITATIONS AND EXCLUSIONS MAY NOT APPLY TO YOU.

This warranty gives you specific legal rights, but you may also have other rights which vary from state to state. This Warranty may not be altered other than in writing signed by an officer of KWA Performance Industries, Inc.

KWA Performance Industries, Inc.
18571 E. Gale Ave.
City of Industry, CA 91748-1339

626-581-1777

www.kwausea.com

SPECIFICATIONS

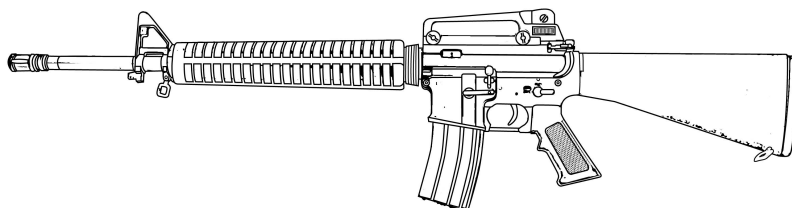
KM16BR

- Overall Length [Fixed] = 100.33 cm (39.5")
- Outer Barrel Length = 515 mm (20.27")
- Inner Barrel Length = 509 mm
- Inner Barrel Diameter = 6.05 mm
- Weight = 3.21 kg (7.7 lbs)
- Barrel thread = 14 mm Negative
- Caliber = 6 mm
- Magazine Capacity = 350
- Rate of Fire = 20+ RPS
- Velocity = 118~125 MPS (390~410 FPS)
- Energy Output with .20g BB = 1.49 Joules
- Power Source = 9.6v NiMh, 7.4v or 11.1v 15c Li-po/Li-Fe

Special Features:

- KWA 2GX Gearbox
- KWA 2G High Performance Bucking
- Full metal alloy flat top receiver
- Adjustable front and rear sights
- Removable carry handle
- Semi and Full Auto selective fire
- Adjustable Hop-up
- Fiber reinforced full stock with battery compartment

*Individual test results may vary depending on brand of BBs, and chronograph used.



SPECIFICATIONS

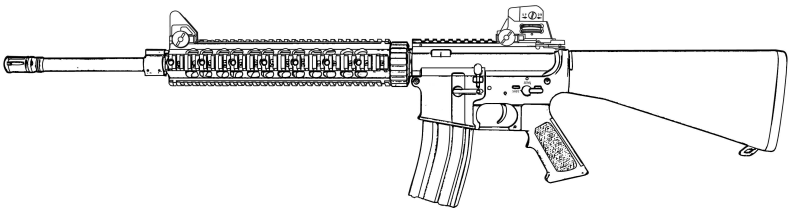
KM16 SR12

- Overall Length [Fixed] = 100.33 cm (39.5")
- Outer Barrel Length = 515 mm (20.27")
- Inner Barrel Length = 509 mm
- Inner Barrel Diameter = 6.05 mm
- Weight = 3.21 kg (7.7 lbs)
- Barrel thread = 14 mm Negative
- Caliber = 6 mm
- Magazine Capacity = 350
- Rate of Fire = 20+ RPS
- Velocity = 118~125 MPS (390~410 FPS)
- Energy Output with .20g BB = 1.49 Joules
- Power Source = 9.6v NiMh, 7.4v or 11.1v 15c Li-po/Li-Fe

Special Features:

- KWA 2GX Gearbox
- KWA 2G High Performance Bucking
- Full metal alloy flat top receiver
- 12" Machined, aluminum forend with four Picatinny rails
- Free Float Rail Adapter System
- Flip up adjustable front and rear sights
- Semi and Full Auto selective fire
- Adjustable Hop-up
- Fiber reinforced full stock with battery compartment

*Individual test results may vary depending on brand of BBs, and chronograph used.



PACKAGE CONTENTS

- 1 KM16BR / KM16 SR12 Airsoft gun
- 2 Allen Wrenches (For cap screw removal)
- 1 Safety Cap
- 1 Sight Adjustment Tool
- 1 Cleaning Rod
- 1 Owners Manual
- 1 Removeable Sling Mount

BREAK-IN PERIOD

Airsoft guns, like many other products require a “break-in” period to ensure the optimal performance. This break-in period allows the spring, piston, gears and other moving parts to be seated and become more consistent in their movements. Every new KWA KM16 Airsoft gun spring is manufactured with more tension than is required, this break-in period will allow the spring to “settle” and operate at the specified FPS range.

The KWA KM16 Airsoft gun’s break-in period will require a minimum of 2000 rounds. During this break-in period, the Airsoft gun will require more cleaning because it will expel excessive grease from the gearbox. After the break-in period, the gun will operate within factory specification. The accuracy of the brass barrel will also improve as you continue to use the gun.

LOADING HIGH CAP MAGAZINE

1. Release the magazine by pressing the magazine release button.
2. Open the magazine top plate and pour the Airsoft BBs into the chamber. Close the plate when the chamber is full.
3. Turn the winding wheel on the bottom of the magazine to tighten the spring tension. This will allow the Airsoft BBs to feed through the top of the magazine.
4. Insert the magazine into the Airsoft gun until it clicks into place.

NOTE: Spring tension will unwind as you fire the gun. Continue winding the magazine regularly as necessary to empty the high cap magazine.

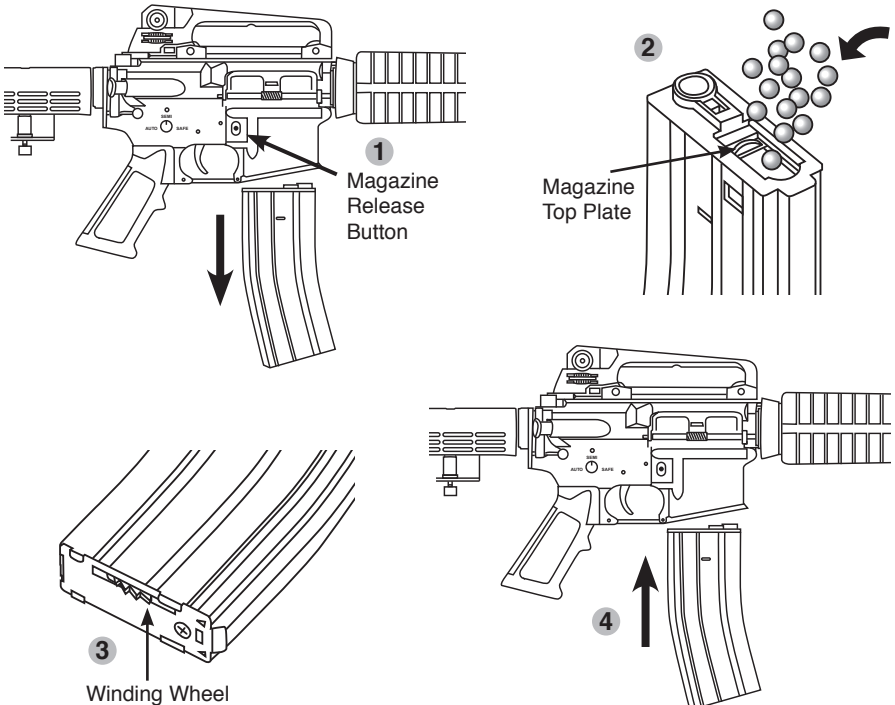
Loading safety tips:

- Switch the selector to safe
- Be sure the safety cap is on
- Keep your finger off trigger at all times



WARNING: Use only 6mm high grade BBs. Using low grade BBs will damage Airsoft gun.

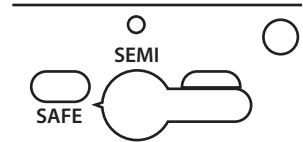
NOTE: Use 0.25g or heavier BBs for better performance.



FIRE SELECTOR SWITCH

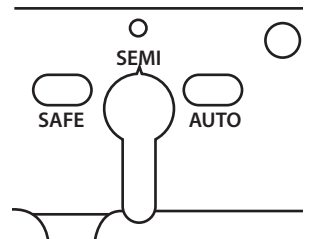
1. Safe

In Safe mode the gun will not fire. For safety reason, you should keep the switch in Safe mode at all times when you are not ready to fire.



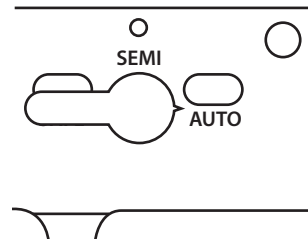
2. Semi-Auto

In Semi-Auto mode the gun will fire one shot for each time you pull the trigger.



3. Full Auto

In this Full Auto mode the gun will fire continuously as long as the trigger is depressed.



WARNING: Do not pull the trigger when switching the fire selector.

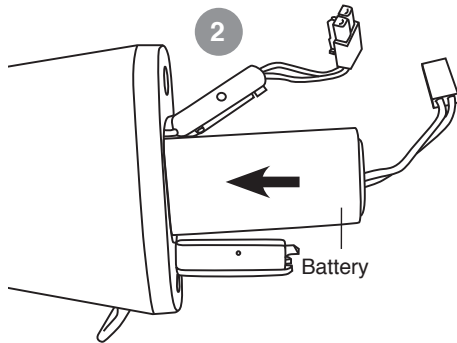
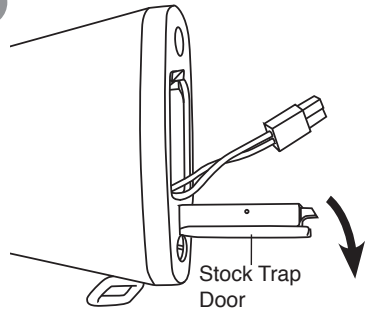
BATTERY INSTALLATION

1. Set the fire selector switch to safe mode. Push down on the stock trap door release button to open the stock. Pull out the connector wire from inside the stock.
2. Place the battery into the stock.
3. Push the connector plugs together firmly until they click into place.
4. Push the wires into the stock and close the stock trap door.

Stock Trap Door Release Button

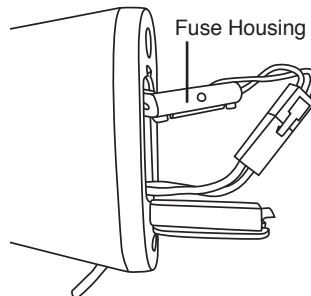
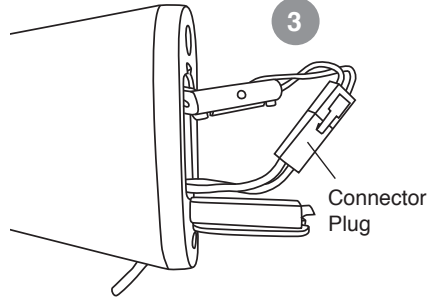


1



2

3



FUSE

To replace the fuse, remove the butt stock cover and replace the fuse with a 15A glass fuse.

HOP-UP SYSTEM

The Hop-Up device is one of KWA's standard features, giving Airsoft BBs greater stability, further travel and increased accuracy. Airsoft BBs are light-weight and can be affected by wind when fired. With the Hop-Up system, the trajectory of the Airsoft BBs can be adjusted according to the shooting environment or surroundings.

HOP-UP ADJUSTMENT

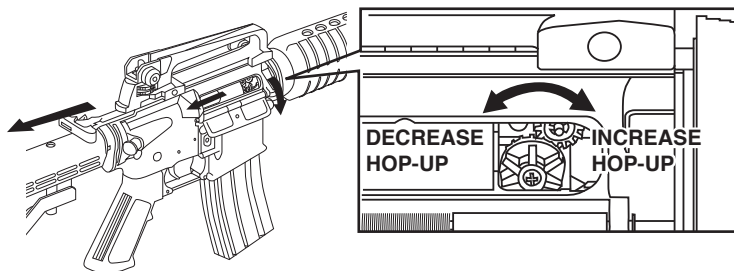
- Pull the charging handle to the rear, the ejection port will open and Hop-Up adjustment dial is revealed. Pull and hold charging handle to the rear when adjusting Hop-Up.
- Turn the Hop-Up adjustment dial forward to increase hop-up. Turn the Hop-Up adjustment dial backward to decrease hop-up.
- Excessively turning of Hop-Up adjustment dial forward can cause Airsoft BBs to jam. Continued firing with a jammed barrel will cause damage to the gearbox.
- When jamming occurs, immediately stop shooting and turn the Hop-Up adjustment dial backward to decrease hop. Remove jammed Airsoft BBs.

Before removing jammed Airsoft BBs, be sure to return the hop-up adjustment dial to normal position. After removal of Airsoft BBs, test fire 2 – 3 rounds to check for clearance. Resume adjustment. KWA Airsoft guns are made with precision barrel, use only new, quality Airsoft BBs. The use of recycled or low quality Airsoft BBs are the primary cause of jamming. In most cases, it can severely damage the gearbox and inner barrel.

Excessive Hop – Airsoft BB travels an upward trajectory path. Turn Hop-Up adjustment dial backward to decrease hop-up.

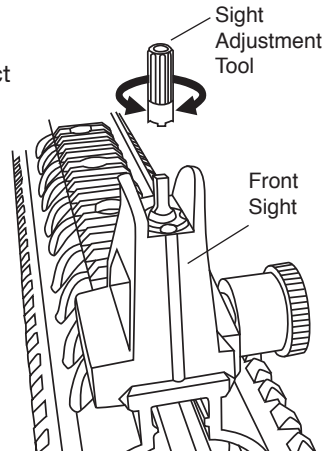
Perfect Hop – Airsoft BB travels long distance horizontally.

Inefficient Hop – Airsoft BB travels a downward trajectory path. Turn Hop-Up adjustment dial forward to increase hop.



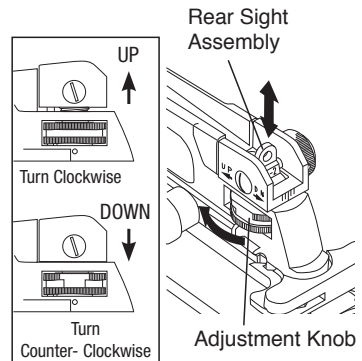
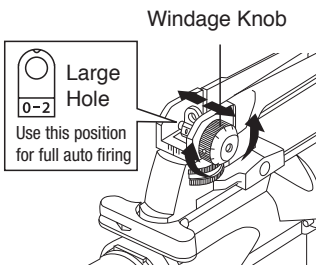
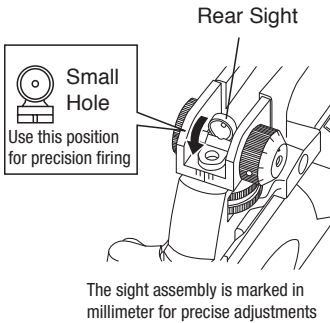
FRONT SIGHT ADJUSTMENT

- The front sight can be moved up and down when zeroing rear sight
- Turn counter clockwise to lower the point of impact
- Stop turning when a click sound is heard



REAR SIGHT ADJUSTMENT

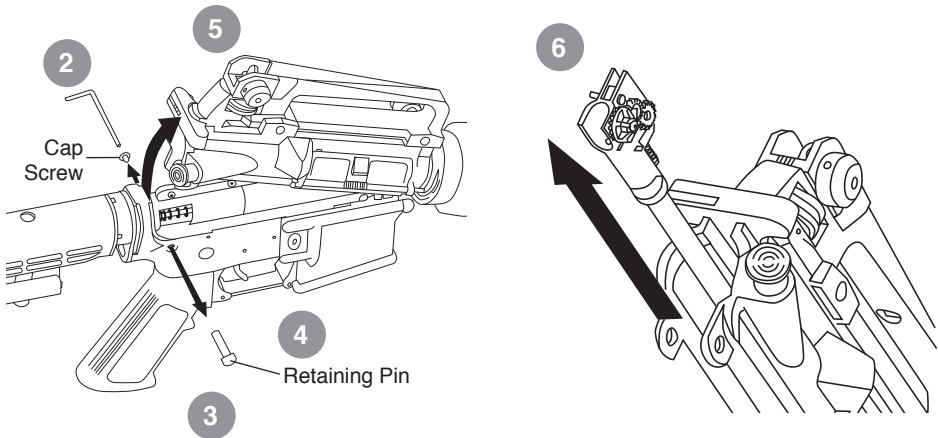
- Flip the rear sight between general and precise aiming
- To adjust the horizontal point of impact, rotate the windage knob located on the rear of the sight
- To adjust the vertical point of impact, rotate the sight elevation knob located on the right side of the sight



DISASSEMBLY

Note: Before opening the receiver, the piston must be in forward position.

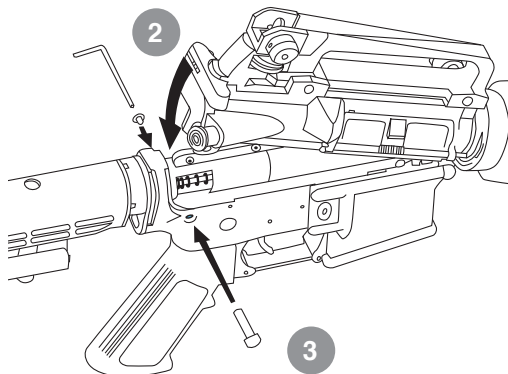
1. Fire in semi-automatic mode 2-3 times to clear the barrel and reset piston.
2. Remove the Rear Pin only from lower receiver with the provided Allen wrenches.
3. Use 1 wrench to hold cap screw, the other to turn set pin.
4. After the removal of cap screw, use allen wrench to push pin out.
5. Pull the Upper receiver up.
6. Slide out the inner barrel with Hop-Up assembly.



WARNING: Before removing any parts, be sure the fire selector is set to "SAFE". Always place the safety cap on the barrel tip when servicing your gun.

ASSEMBLY

1. Insert the inner barrel and Hop-Up assembly into the upper receiver.
2. Secure the Hop-Up assembly into the upper receiver. Push down the upper receiver to close.
3. Align the pin holes. Insert Pin and use the allen wrench to tighten the cap screw.



CLEANING AND LUBRICATION

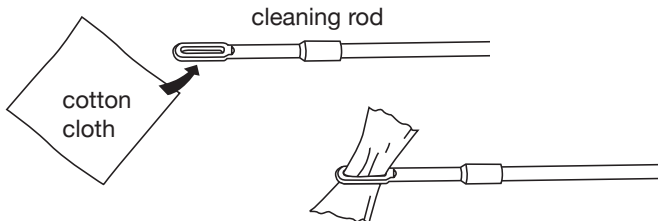


WARNING! Unload and clear the Airsoft gun of all BBs before cleaning.

Cleaning Procedure

The Airsoft gun barrel should be cleaned and lubricated after each shooting session. Regular cleaning prevents the effects of BB residue buildup, and ensures all parts are lubricated properly.

1. Ensure that the safety is engaged
2. Disable Hop-Up by dialing to the normal position
3. Remove the magazine and clear the chamber of loaded BBs
4. Disassemble the receiver (see Disassembly section)
5. Steps to use cleaning rod:
 - a. Cut a piece of clean cotton cloth to 1 inch by 0.5 inch size. Insert one end of the cloth into the hole in the cleaning rod (adjust the length of cloth for smooth entry into the barrel)
 - b. Wind the cloth around the cleaning rod
 - c. Insert the cleaning rod into the inner barrel, turning the rod as you insert into the barrel
 - d. Remove the cleaning rod and check the cotton cloth for dirt. Repeat steps a. through c. when necessary



6. Clean the remainder of the Airsoft gun with cotton-tipped swabs, or general purpose cleaning cloths.

BASIC TROUBLESHOOTING GUIDE FOR RIFLE

SYMPTOMS	CAUSE	SOLUTIONS
Air Soft gun is not firing	Selector set to Safe Mode	Select Semi-Auto or Full-Auto Mode
	Dead battery	Replace or Charge battery
	Burned out fuse	Replace with a new fuse
	Motor damaged or bad connection	Return gun for professional care
	Pinched wiring	Return gun for professional care
Motor is running but not firing	Internal failure	Return gun for professional care
Motor or Battery is hot after short use	Pinched wiring	Return gun for professional care
	Motor damaged or bad connection	Return gun for professional care
Semi-Auto feature not functioning properly	Incorrect timing	Set selector to full-auto mode. Dry fire 10-20 rounds before returning it to semi-auto mode
Semi-Auto feature not functioning at all	Internal failure	Return gun for professional care
Firing cycle slows down	Weak battery	Recharge battery
High pitch or grinding noise	Gear may be damaged or Motor level not adjusted	Return gun for professional care
BB travels upward	Excessive hop	Turn hop adjustment dial backward
BB travels downward	Insufficient hop	Turn hop adjustment dial forward
BB double feeding or rolling out of the barrel	Excessive oil in chamber	Fire 200 rounds to eliminate excessive oil
	Hop-Up unit is contaminated	Clean Hop-Up unit with supplied cleaning rod
	Hop-Up unit may be damaged	Return gun for professional care
Hop-Up unit can't be adjusted	Damaged adjustment dial or internal parts	Return gun for professional care
Inner barrel is jammed	Use of recycled or low quality BBs	Use KWA Perfect BBs or other high quality BBs
	Inner barrel is contaminated	Clean inner barrel with supplied cleaning rod
	Inner barrel is damaged	Return gun for professional care
Hi-cap magazine not feeding	Magazine has not been wound.	Wind wheel underneath magazine
	BBs are lodged inside the magazine	Shake or tap magazine to unclog the BBs
	Internal failure	Return gun for professional care

OPERATING UNDER UNUSUAL CONDITIONS

Unusual conditions are defined as any condition requiring special maintenance. Perform maintenance outlined for the climate similar to your operational area

Extreme Cold:

Operating an Airsoft gas gun in extremely cold temperatures is not recommended. Cold temperature will cause the Hop-Up Bucking to harden, reducing its effectiveness or cause the gearbox shell to fracture during operation, rendering the gun inoperable.

Extreme Heat:

Do not keep Airsoft gun and batteries under direct sunlight for long periods of time.

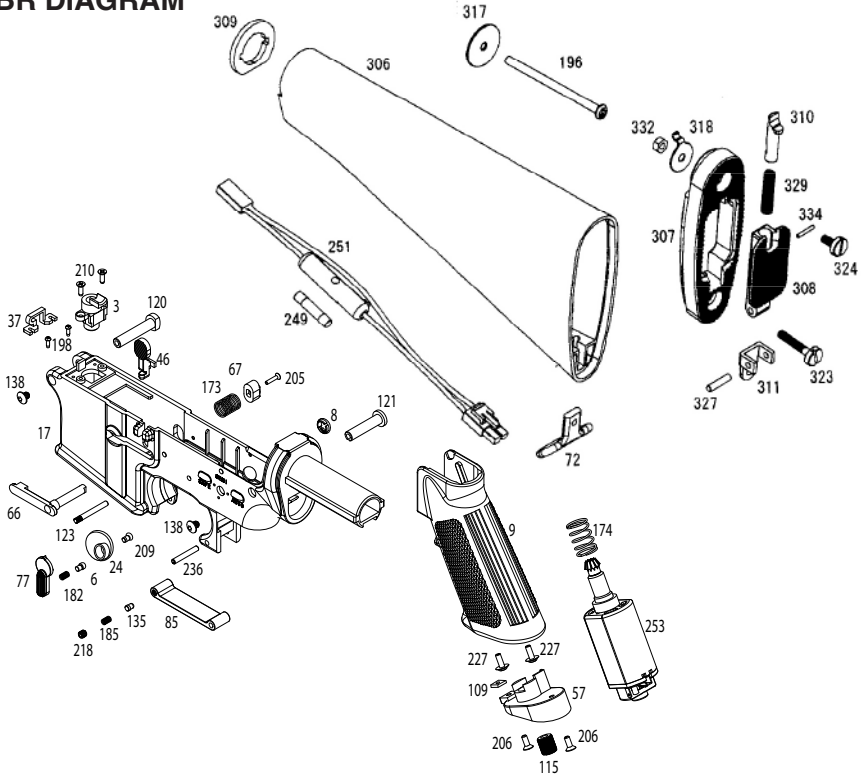
Dust or Sand:

Dust or sand can get into a gun and cause malfunctions and/or excessive wear. Keep the gun covered whenever possible. Use lubricant sparingly, as lube naturally attracts dirt and other particles. After use in a dusty area, always field strip the gun (refer to Disassembly Section) and clean any areas you can reach with a soft, lint-free cloth.

Heavy Rain:

Keep the gun out of the rain and water. This will prevent electrical failure and fluid build-up inside the mechbox. Dry gun completely with clean cloth and clean inner barrel if necessary.

KM16BR DIAGRAM



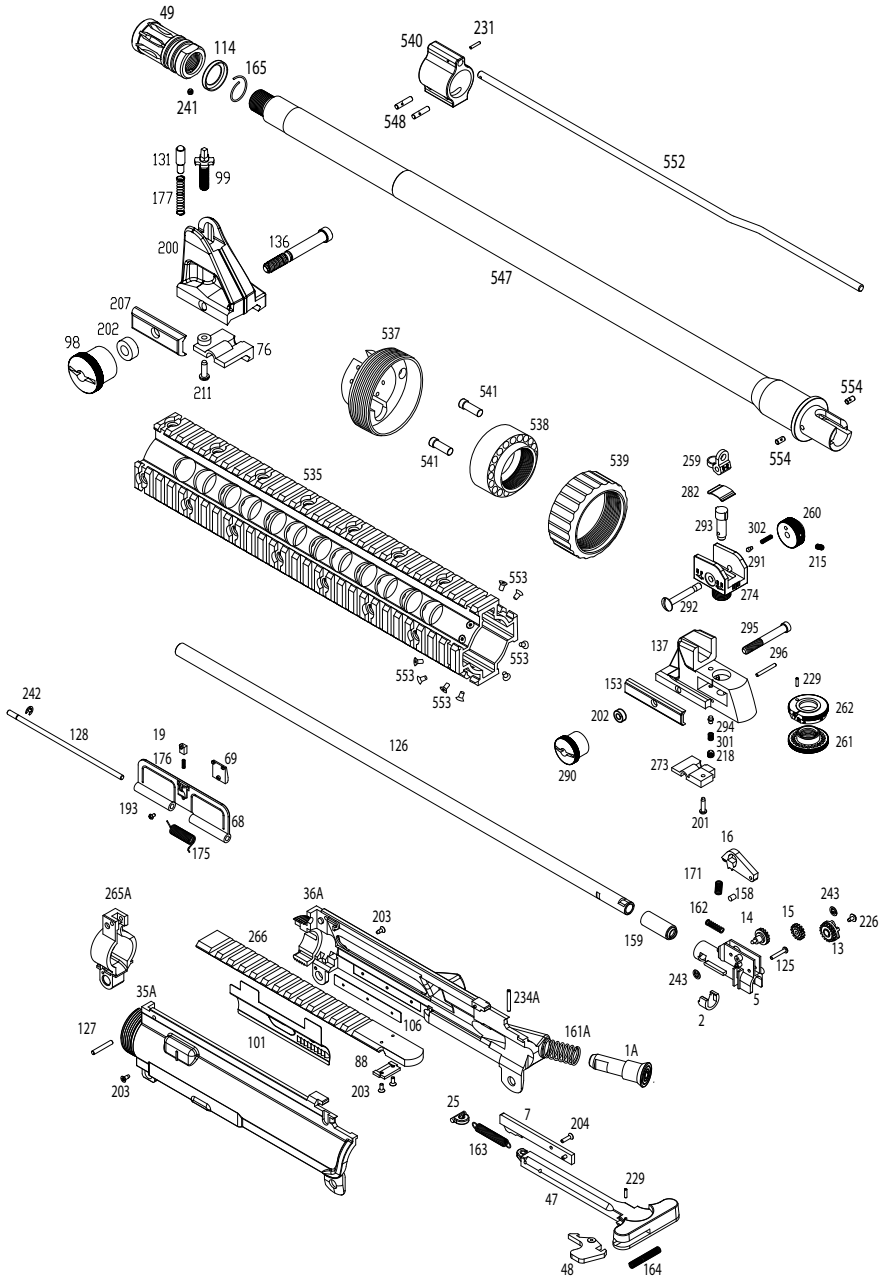
KM16BR PARTS LIST

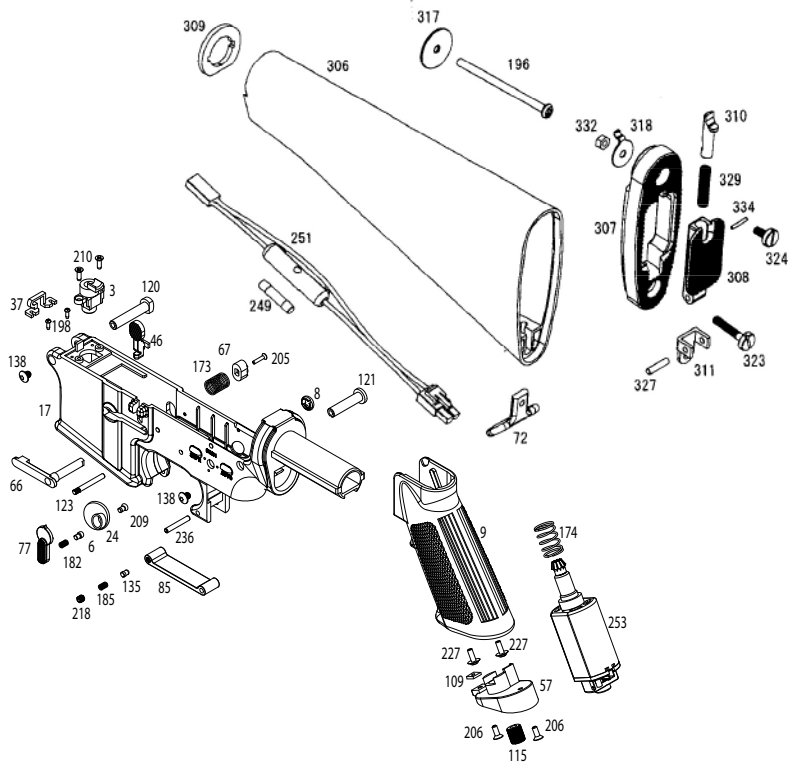
Parts #	Description	Parts #	Description	Parts #	Description
199-1002-1A	Forward Assist Button	199-1002-19	Ejection Port Cover Lock Plunger	199-1002-68	Ejection Port Cover
199-1002-2	Inner Barrel Retainer	199-1002-24	Selector Plate	199-1002-69	Ejection Port Cover Lock
199-1002-3	BB Ramp	199-1002-25	Charging Handle Spring Hook	199-1002-M70	Switch (Assembly)
199-1002-5	Chamber Block	199-1002-35A	Upper Receiver (Left)	199-1002-72	Stock Swivel
199-1002-6	Detente	199-1002-36A	Upper Receiver (Right)	199-1002-77	Selector
199-1002-7	Bolt Plate Carrier	199-1002-37	Wire Holder	199-1002-85	Trigger Guard
199-1002-8	Selector Cover	199-1002-46	Bolt Catch	199-1002-88	Rail Retaining Block
199-1002-9	Grip	199-1002-47	Charging Handle	199-1002-91	Swivel Front
199-1002-13	Hop-Up Adjustment Wheel	199-1002-48	Charging Handle Latch	199-1002-101	Bolt Plate
199-1002-14	Hop-Up Spindle (Small)	199-1002-49	Flash Hider	199-1002-106	Dust Cover Retainer
199-1002-15	Hop-Up Spindle (Large)	199-1002-57	Motor Cover Plate	199-1002-109	Set Screw Plate
199-1002-16	Hop-Up Bar	199-1002-66	Magazine Catch	199-1002-114	Flash Hider Washer
199-1002-17	Lower Receiver	199-1002-67	Magazine Catch Button	199-1002-115	Motor Adjustment Screw
				199-1002-120	Take Down Pin (Front)

KM16BR PARTS LIST

Parts #	Description	Parts #	Description	Parts #	Description
199-1002-121	Take Down Pin (Rear)	199-1002-218	Screw M3X8 SC X 2	199-1002-291	Windage Knob Plunger
199-1002-123	Gear Box Set Pin	199-1002-226	Hop-Up Wheel Screw	199-1002-292	Rear Sight Windage Screw
199-1002-125	Hop Up Bar Pin	199-1002-227	Grip Screws X 2	199-1002-293	Elevation Bar
199-1002-126	Inner Barrel	199-1002-229	Charging Handle Latch Pins X 2	199-1002-294	Rear Sight Elevation Plunger
199-1002-127	Weaver Rail Pin	199-1002-231	Gas Tube Pin	199-1002-295	Carry Handle Bolts X 2
199-1002-128	Ejection Port Cover Pin	199-1002-234A	Foward Assist Button Pin	199-1002-296	Elevation Knob Pin
199-1002-135	Trigger Guard Lock Pin	199-1002-236	Trigger Guard Pin	199-1002-297	Front Sight Plunger
199-1002-138	Receiver Pin Screws X 2	199-1002-239	Front Swivel Pin	199-1002-298	Front Sight Housing Pins X 2
199-1002-158	Hop-Up Cylinder	199-1002-241	Flash Hider Set Screws X 3	199-1002-300	Hand Guard Lock Spring
199-1002-159	Hop-Up Bucking	199-1002-242	Pin Retaining Ring	199-1002-301	Rear Sight Elevation Spring
199-1002-161A	Forward Assist Button Spring	199-1002-243	Hop-Up Spindle Rings X 2	199-1002-302	Windage Knob Spring
199-1002-162	Chamber Block Spring	199-1002-244	Locking Clamp	199-1002-303	Front Sight Spring
199-1002-163	Charging Handle Spring	199-1002-249	Fuse	199-1002-306	Stock
199-1002-164	Charging Handle Latch Spring	199-1002-251	Power Supply Wire	199-1002-307	Butt Plate
199-1002-165	Flash Hider Spring	199-1002-252	Gear Box	199-1002-308	Butt Plate Trap Door
199-1002-171	Hop-Up Bar Spring	199-1002-253	Motor	199-1002-309	Receiver End Plate
199-1002-173	Magazine Catch Spring	199-1002-259	Rear Sight	199-1002-310	Butt Plate Trap Door Lock
199-1002-174	Motor Tension Spring	199-1002-260	Windage Knob	199-1002-311	Butt Plate Trap Door Hinge
199-1002-175	Ejection Port Cover Spring	199-1002-261	Elevation Knob Dial Base	199-1002-312L	Lower Hand Guard
199-1002-176	Ejection Port Cover Lock Spring	199-1002-262	Elevation Knob Dial	199-1002-312T	Top Hand Guard
199-1002-182	Selector Spring	199-1002-265A	Barrel Assembly Block	199-1002-316	Hand Guard Base
199-1002-185	Trigger Guard Plunger Spring	199-1002-266	Weaver Rail	199-1002-317	Stock Tube Retainer
199-1002-193	Ejection Port Cover Screw	199-1002-267	Hand Guard Ring	199-1002-318	Butt Plate Washer Lock
199-1002-198	Wire Clamp Screws X 2	199-1002-269	Barrel Nut	199-1002-323	Butt Plate Screw (Large)
199-1002-201	Carry Handle Lock Screws X 2	199-1002-271	Carry Handle	199-1002-324	Butt Plate Screw (Small)
199-1002-203	Screw M2X5 X 4	199-1002-272	Carry Handle Lock Front "A"	199-1002-327	Butt Plate Trap Door Hinge Pin
199-1002-204	Bolt Plate Carrier Screw	199-1002-273	Carry Handle Lock Rear "B"	199-1002-329	Butt Plate Trap Door Lock Spring
199-1002-205	Magazine Catch Screw	199-1002-274	Rear Sight Housing Base	199-1002-332	Butt Plate Bolt
199-1002-206	Motor Plate Screws X 2 "Metric"	199-1002-275	Front Sight	199-1002-334	Butt Plate Trap Door Lock Retaining Pin
199-1002-209	Selector Screw	199-1002-276	Front Sight Housing Base	199-1002-547	Outer Barrel
199-1002-210	BB Ramp Screws X 2	199-1002-282	Rear Sight Plate Spring	199-1002-552	Gas Tube
199-1002-214	Hand Guard Base Set Screw	199-1002-283	Carry Handle Locking Plate	199-1002-554	Barrel Base Pins X 2
199-1002-215	Windage Knob Set Screw	199-1002-289	Hand Guard Base Retainer		
		199-1002-290	Carry Handle Knobs X 2		

KM16 SR12 DIAGRAM





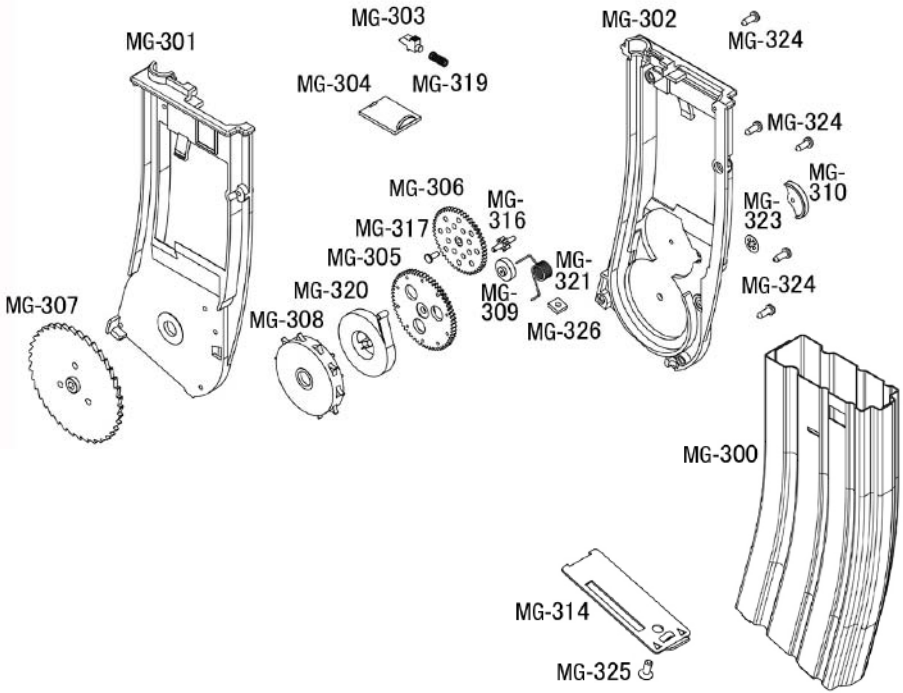
KM16 SR12 PARTS LIST

Parts #	Description	Parts #	Description	Parts #	Description
199-1002-1A	Foward Assist Button	199-1002-24	Selector Plate	199-1002-72	Stock Swivel
199-1002-2	Inner Barrel Retainer	199-1002-25	Charging Handle Spring Hook	199-1002-76	Front Sight Base Insert
199-1002-3	BB Ramp	199-1002-35A	Upper Receiver (Left)	199-1002-77	Selector
199-1002-5	Chamber Block	199-1002-36A	Upper Receiver (Right)	199-1002-85	Trigger Guard
199-1002-6	Detente	199-1002-37	Wire Holder	199-1002-88	Rail Retaining Block
199-1002-7	Bolt Plate Carrier	199-1002-46	Bolt Catch	199-1002-98	Front Sight Knob
199-1002-8	Selector Cover	199-1002-47	Charging Handle	199-1002-99	Front Sight Post
199-1002-9	Grip	199-1002-48	Charging Handle Latch	199-1002-101	Bolt Plate
199-1002-13	Hop-Up Adjustment Wheel	199-1002-49	Flash Hider	199-1002-106	Dust Cover Retainer
199-1002-14	Hop-Up Spindle (Small)	199-1002-57	Motor Cover Plate	199-1002-109	Set Screw Plate
199-1002-15	Hop-Up Spindle (Large)	199-1002-66	Magazine Catch	199-1002-114	Flash Hider Washer
199-1002-16	Hop-Up Bar	199-1002-67	Magazine Catch Button	199-1002-115	Motor Adjustment Screw
199-1002-17	Lower Receiver	199-1002-68	Ejection Port Cover	199-1002-120	Take Down Pin (Front)
199-1002-19	Ejection Port Cover Lock Plunger	199-1002-69	Ejection Port Cover Lock	199-1002-121	Take Down Pin (Rear)

KM16 SR12 PARTS LIST

Parts #	Description	Parts #	Description	Parts #	Description
199-1002-123	Gear Box Set Pin	199-1002-204	Bolt Plate Carrier Screw	199-1002-292	Rear Sight Windage Screw
199-1002-125	Hop-Up Bar Pin	199-1002-205	Magazine Catch Screw	199-1002-293	Elevation Bar
199-1002-126	Inner Barrel	199-1002-206	Motor Plate Screw X 2 "Metric"	199-1002-294	Elevation Dial Plunger
199-1002-127	Weaver Rail Pin	199-1002-207	Front Sight Clamp	199-1002-295	Rear Sight Base Screw
199-1002-128	Ejection Port Cover Pin	199-1002-209	Selector Screw	199-1002-296	Elevation Knob Pin
199-1002-131	Front Sight Plunger	199-1002-210	BB Ramp Screws X 2	199-1002-301	Rear Sight Elevation Spring
199-1002-135	Trigger Guard Lock Pin	199-1002-211	Front Sight Base Insert Screw	199-1002-302	Windage Knob Spring
199-1002-136	Front Sight Bolt	199-1002-215	Windage Knob Set Screw	199-1002-306	Stock
199-1002-137	Rear Sight Base	199-1002-218	Screw M3X8 SC X 2	199-1002-307	Butt Plate
199-1002-138	Receiver Pin Screws X 2	199-1002-226	Hop-Up Wheel Screw	199-1002-308	Butt Plate Trap Door
199-1002-153	Rear Sight Clamp	199-1002-227	Grip Screws X 2	199-1002-309	Receiver End Plate
199-1002-158	Hop-Up Cylinder	199-1002-229	Charging Handle Latch Pins X 2	199-1002-310	Butt Plate Trap Door Lock
199-1002-159	Hop-Up Bucking	199-1002-231	Gas Tube Pin	199-1002-311	Butt Plate Trap Door Hinge
199-1002-161A	Forward Assist Button Spring	199-1002-234A	Forward Assist Button Pin	199-1002-317	Stock Tube Retainer
199-1002-162	Chamber Block Spring	199-1002-236	SP 3X20 Roll Pin	199-1002-318	Butt Plate Washer Lock
199-1002-163	Charging Handle Spring	199-1002-241	Flash Hider Set Screw	199-1002-323	Butt Plate Screw (Large)
199-1002-164	Charging Handle Latch Spring	199-1002-242	Pin Retaining Ring	199-1002-324	Butt Plate Screw (Small)
199-1002-165	Flash Hider Spring	199-1002-243	Hop-Up Spindle Rings X 2	199-1002-327	Butt Plate Trap Door Hinge Pin
199-1002-171	Hop-Up Bar Spring	199-1002-249	Fuse	199-1002-329	Butt Plate Trap Door Lock Spring
199-1002-173	Magazine Catch Spring	199-1002-251	Power Supply Wire	199-1002-332	Butt Plate Bolt
199-1002-174	Motor Tension Spring	199-1002-252	Gear Box	199-1002-334	Butt Plate Trap Door Lock Retaining Pin
199-1002-175	Ejection Port Cover Spring	199-1002-253	Motor	199-1002-535	Hand Guard
199-1002-176	Ejection Port Cover Lock Spring	199-1002-259	Rear Sight	199-1002-537	Hand Guard Base
199-1002-177	Front Sight Spring	199-1002-260	Windage Knob	199-1002-538	Barrel Nut
199-1002-182	Selector Spring	199-1002-261	Elevation Dial Base	199-1002-539	Knurled Hand Guard Ring
199-1002-185	Trigger Guard Plunger Spring	199-1002-262	Elevation Dial	199-1002-540	Gas Tube Base
199-1002-193	Ejection Port Cover Screw	199-1002-265A	Barrel Assembly Block	199-1002-541	Hand Guard Alignment Pins X 2
199-1002-196	Stock Screw	199-1002-266	Weaver Rail	199-1002-547	Outer Barrel
199-1002-198	Wire Clamp Screws X 2	199-1002-273	Elevation Dial Plunger Cover	199-1002-548	Gas Tube Base Pins X 2
199-1002-200	Front Sight Base	199-1002-274	Rear Sight Housing Base	199-1002-552	Gas Tube
199-1002-201	Elevation Cover Screw	199-1002-282	Rear Sight Plate Spring	199-1002-553	Hand Guard Base Screws X 8
199-1002-202	Sight Knob Spacer	199-1002-290	Rear Sight Locking Knob	199-1002-554	Barrel Base Pins X 2
199-1002-203	Screw M2X5 X 4	199-1002-291	Windage Knob Plunger		

MAGAZINE DIAGRAM AND PARTS LIST



Parts #	Description
199-1002-MG300	Magazine Case
199-1002-MG301	Inner Magazine Housing (Left)
199-1002-MG302	Inner Magazine Housing (Right)
199-1002-MG303	BB Stop
199-1002-MG304	BB Compartment Cover
199-1002-MG305	Gear # 1
199-1002-MG306	Gear # 2
199-1002-MG307	Winding Wheel
199-1002-MG308	BB Spindle
199-1002-MG09	Counter Weight Wheel
199-1002-MG310	Half Wheel Counter Weight

Parts #	Description
199-1002-MG314	Magazine Base Plate
199-1002-MG316	Sprocket Shaft
199-1002-MG317	Sprocket Wheel Pin
199-1002-MG319	BB Stop Spring
199-1002-MG320	Coil Spring
199-1002-MG321	Counter Weight Spring
199-1002-MG323	Half Wheel Retainer Clip
199-1002-MG324	Phillip Screws X 5
199-1002-MG325	Magazine Base Plate Screw
199-1002-MG-26	Base Plate Nut



KWA Performance Industries, Inc.

18571 E. Gale Ave

City of Industry, CA 91748

T: 626.581.1777 • F: 626.581.0777

www.kwausa.com